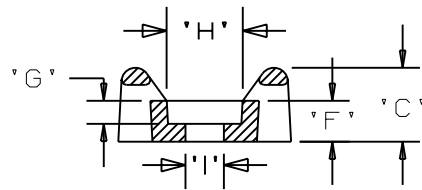
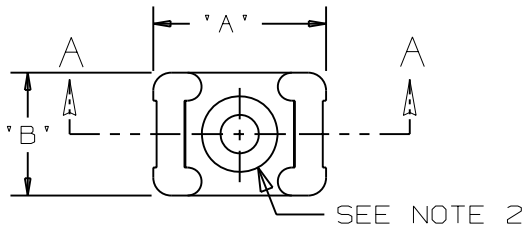
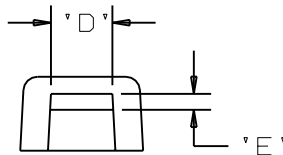


THIS COPY IS PROVIDED ON A RESTRICTED BASIS AND IS NOT TO BE USED IN ANY WAY DETRIMENTAL TO THE INTERESTS OF PANDUIT CORP.

PANDUIT PART NO.*	RECOMMENDED FASTENER	'A'	'B'	'C'	'D'	'E'	'F'	'G' 'REF'	'H' 'REF'	'I' 'REF'	USE WITH THESE CABLE TIE CROSS SECTIONS	WEIGHT (g) lbs/100 pcs.
TM3S8-_100	#8 (M4) SCREW	0.86 [21.8]	0.61 [15.5]	0.38 [9.5]	0.320 [8.17] ±.020 [.5]	0.088 [2.2] ±.020 [.5]	0.21 [5.3]	0.105 [2.7]	0.319	0.175	MINIATURE INTERMEDIATE STANDARD LT. HEAVY	0.369 [167.5]



SECTION A - A



NOTES:

- SEE CURRENT PRICE SHEET FOR PART NUMBER SUFFIX DESIGNATION FOR PACKAGE SIZE.
- HOLE DIMENSIONS SHOULD ACCOMMODATE SPECIFIED RECOMMENDED FASTENER.

DIMENSIONS IN BRACKETS ARE METRIC [mm]

CAD FILENAME/LAYERS

G00239MX_PB_TM3S100_00

PANDUIT

CORP.

TINLEY PARK, ILLINOIS

TM3S8-_100 - TIE MOUNT
WEATHER RESISTANT POLYPROPYLENE

UNLESS OTHERWISE SPECIFIED,
DIMENSIONAL TOLERANCES ARE:
(.X) ±0.05 [1.3] (.XXX) ±0.010 [0.25]
(.XX) ±0.02 [0.5] ANGLES ±5°

UNLESS OTHERWISE SPECIFIED,
ALL DIMENSIONS ARE GIVEN
IN INCHES, THIRD ANGLE
PROJECTION.

DRAWN BY
DJSM

MAT'L:

DATE
4/4/07

WEATHER RESISTANT
POLYPROPYLENE

SCALE
NONE

DRAWING NO.
GB0239MX

DWG
A
SIZE

REV	DATE	BY	CHK	DESCRIPTION	ECN	R	CUST	SUP
R	4/4/07	DJSM		INITIAL DRAWING -- PULLED FROM G00239EN_TM3S_11	GB0239MX	R		