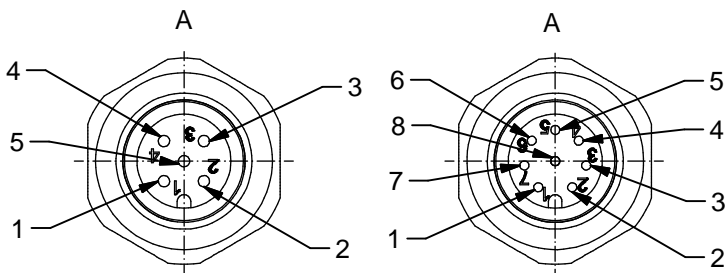


Width across flats 17

Sealing

L

M16x1,5

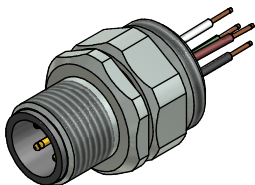


**Contact assignment:**

- 1 brown
- 2 white
- 3 blue
- 4 black
- 5 green-yellow

**Contact assignment:**

- 1 white
- 2 brown
- 3 green
- 4 yellow
- 5 grey
- 6 pink
- 7 blue
- 8 red



**Technical specification:**

Rated voltage: IEC 61076-2-101	4pos 5pos 8pos 250 V 60 V 30 V
Current rating: IEC 61076-2-101	4/5pos 8pos 4 A at 40°C 2 A at 40°C
Insulation resistance: IEC 60512	>=100 MΩ
Pollution degree: IEC 60664-1	3/2
Degree of protection: IEC 60529	IP 67, in mated condition
Temperature range:	-30°C ... +80°C
Mating cycles: IEC 60512-9a	>=100

**Materials:**

Contact:	CuZn
Contact plating:	Nickel, gold plated
Contact carrier:	PBT GF, UL 94
Sealing:	FPM
Counternut:	CuZn, nickel plated
Socket housing:	CuZn, nickel plated
Grouting:	Polyurethane-resin, UL 94

**Installation specification:**

recommended torque:	1-1,2 Nm
Conec installation tool:	Torque wrench: 36-000200 Insert across flats 17: 36-000230

Part no:	Description:	Pos	Length L:	Wire:
43-01015	SAL - 12 - FSP4 - 0,5	4	0,5m	AWG 24 PVC, UL
43-xxxxx	SAL - 12 - FSP4 - ...	4	x	
43-01016	SAL - 12 - FSP5 - 0,5	5	0,5m	
43-xxxxx	SAL - 12 - FSP5 - ...	5	x	
43-01017	SAL - 12 - FSP8 - 0,5	8	0,5m	
43-xxxxx	SAL - 12 - FSP8 - ...	8	x	

DO NOT ALTER CAD DRAWING BY HAND Directive 2002/95/EC RoHS compliant	Index: c 01.02.13 MG Ä4631 Data sheet revised, technical specification changed, materials corrected	dim. in mm	title: <b>Male connector M12x1 with wire, frontmounting, reposition</b>							
	tolerance of wire: L ≤ 0,5m: L + 20mm L > 0,5m: L + 4%	<table border="1" style="font-size: 8px;"> <tr> <td>date</td> <td>name</td> </tr> <tr> <td>drawn 01.03.07</td> <td>Fromm</td> </tr> <tr> <td>appd. 01.03.07</td> <td>Mankopf</td> </tr> </table>			date	name	drawn 01.03.07	Fromm	appd. 01.03.07	Mankopf
	date	name								
	drawn 01.03.07	Fromm								
appd. 01.03.07	Mankopf									
general tolerance: 0 ± 0,50mm 0,0 ± 0,25mm 0,00 ± 0,10mm			part no: <div style="text-align: center; font-size: 16px; font-weight: bold;">see table</div>							
THIS DRAWING MAY NOT BE COPIED OR REPRODUCED IN ANY WAY, AND MAY NOT BE PASSED ON TO A THIRD PARTY WITHOUT WRITTEN PERMISSION. OWNERSHIP AND COPYRIGHT OF CONEC GmbH										