

## High Brightness LED Power Module



22454



22159

### DESCRIPTION

The VLSL3112A2, VLSL3124A2 are metal core based high brightness LED power modules, assembled with 12 or 24 HB white LEDs. The color temperature is natural white. The typical color temperature is 4000 K. The modules are designed for flexible use due to the option for using special reflectors to adjust the emission characteristics.

### PRODUCT GROUP AND PACKAGE DATA

- Product group: LED
- Package: LED module
- Product series: power
- Angle of half intensity:  $\pm 80^\circ$

### PARTS TABLE

PART	COLOR	LUMINOUS FLUX (at $I_F = 700$ mA typ.)	COLOR TEMPERATURE K	TECHNOLOGY
VLSL3112A2	Natural white	$\Phi_V = 1600$ lm	typ. 4000	InGaN
VLSL3124A2	Natural white	$\Phi_V = 3200$ lm	typ. 4000	InGaN

### ABSOLUTE MAXIMUM RATINGS ( $T_{amb} = 25$ °C, unless otherwise specified) VLSL3112A2, VLSL3124A2

PARAMETER	TEST CONDITION	SYMBOL	VALUE	UNIT
Forward current	Per row	$I_F$	750	mA
Power dissipation VLSL3112A2	Total (max.)	$P_{tot}$	34.5	W
Power dissipation VLSL3124A2		$P_{tot}$	69	W
Junction temperature		$T_j$	120	°C
Operating temperature range		$T_{amb}$	- 40 to + 85	°C
Storage temperature range		$T_{stg}$	- 40 to + 85	°C

### FEATURES

- Metal core PCB: Al > 0.75 thickness
- Single side/single layer PCB
- Shiny white surface
- 12 or 24 LEDs minimum 71 lm at 350 mA per LED. Max. current per LED 1 A
- Conductive top layer: Cu (min. 18  $\mu$ m)
- Isolation layer prepreg > 63  $\mu$ m
- Standard solder mask material
- ESD withstand voltage: up to 2 kV according to JESD22-A114-B
- LM80 certified LEDs
- Compliant to RoHS Directive 2002/95/EC



**RoHS**  
COMPLIANT  
**GREEN**  
(5-2008)\*\*

### APPLICATIONS

- Streetlight
- Internal lighting in buildings
- Tunnel lights
- General lighting application

\*\* Please see document "Vishay Material Category Policy": [www.vishay.com/doc?99902](http://www.vishay.com/doc?99902)

### OPTICAL AND ELECTRICAL CHARACTERISTICS <sup>(1)</sup> ( $T_{amb} = 25\text{ }^{\circ}\text{C}$ , unless otherwise specified) VL3112A2, NATURAL WHITE

PARAMETER	TEST CONDITION	SYMBOL	MIN.	TYP.	MAX.	UNIT
Luminous flux per row <sup>(2)</sup>	$I_F = 700\text{ mA}$	$\Phi_V$	650	800	-	lm
Luminous flux total <sup>(2)</sup>	$I_{board} = 2 \times 700\text{ mA}$	$\Phi_V$	1300	1600	-	lm
Color temperature	$I_F = 700\text{ mA}$	TK	-	4000	-	K
Forward voltage per row	$I_F = 700\text{ mA}$	$V_F$	19	21	23	V
Class A ( $V_{Fmax.} - V_{Fmin.}$ ) all rows <sup>(3)</sup>	$I_F = 700\text{ mA}$	$\Delta V_F$	-	-	0.9	V
Temperature coefficient of $V_F$ per row	$I_F = 350\text{ mA}$	$TC_{V_F}$	-	- 20	-	mV/K
Temperature coefficient of $\Phi_V$	$I_F = 350\text{ mA}$ (per row)	$TC_{\Phi_V}$	-	- 0.4	-	%/K

#### Notes

- <sup>(1)</sup> Forward voltages are tested at a current pulse duration of 1 ms and a tolerance of  $\pm 0.1\text{ V}$ . Luminous flux is measured at a current pulse duration of 25 ms and an accuracy of  $\pm 11\%$ .  
<sup>(2)</sup> Calculated based on single LED unit.  
<sup>(3)</sup>  $V_F$  classes are marked at the LED cluster and represent the technical classification only. The single groups cannot be specifically ordered.

### OPTICAL AND ELECTRICAL CHARACTERISTICS <sup>(1)</sup> ( $T_{amb} = 25\text{ }^{\circ}\text{C}$ , unless otherwise specified) VL3124A2, NATURAL WHITE

PARAMETER	TEST CONDITION	SYMBOL	MIN.	TYP.	MAX.	UNIT
Luminous flux per row <sup>(2)</sup>	$I_F = 700\text{ mA}$	$\Phi_V$	650	800	-	lm
Luminous flux total <sup>(2)</sup>	$I_{board} = 4 \times 700\text{ mA}$	$\Phi_V$	2600	3200	-	lm
Color temperature	$I_F = 700\text{ mA}$	TK	-	4000	-	K
Forward voltage per row	$I_F = 700\text{ mA}$	$V_F$	19	21	23	V
Class A ( $V_{Fmax.} - V_{Fmin.}$ ) all rows <sup>(3)</sup>	$I_F = 700\text{ mA}$	$\Delta V_F$	-	-	0.9	V
Temperature coefficient of $V_F$ per row	$I_F = 350\text{ mA}$	$TC_{V_F}$	-	- 20	-	mV/K
Temperature coefficient of $\Phi_V$	$I_F = 350\text{ mA}$ (per row)	$TC_{\Phi_V}$	-	- 0.4	-	%/K

#### Notes

- <sup>(1)</sup> Forward voltages are tested at a current pulse duration of 1 ms and a tolerance of  $\pm 0.1\text{ V}$ . Luminous flux is measured at a current pulse duration of 25 ms and an accuracy of  $\pm 11\%$ .  
<sup>(2)</sup> Calculated based on single LED unit.  
<sup>(3)</sup>  $V_F$  classes are marked at the LED cluster and represent the technical classification only. The single groups cannot be specifically ordered.

### LUMINOUS FLUX CLASSIFICATION FOR THE SINGLE LED AT 350 mA

GROUP	LUMINOUS FLUX $\Phi_V$ (mIm) CORRELATION TABLE	
	MIN.	MAX.
STANDARD		
KX	71 000	82 000
KY	82 000	97 000
KZ	97 000	112 000



**COLOR RANGE AND COLOR BINNING**

VLSL3112A2, VLSL3124A2; typ. 4000 K; group 4L to 8N

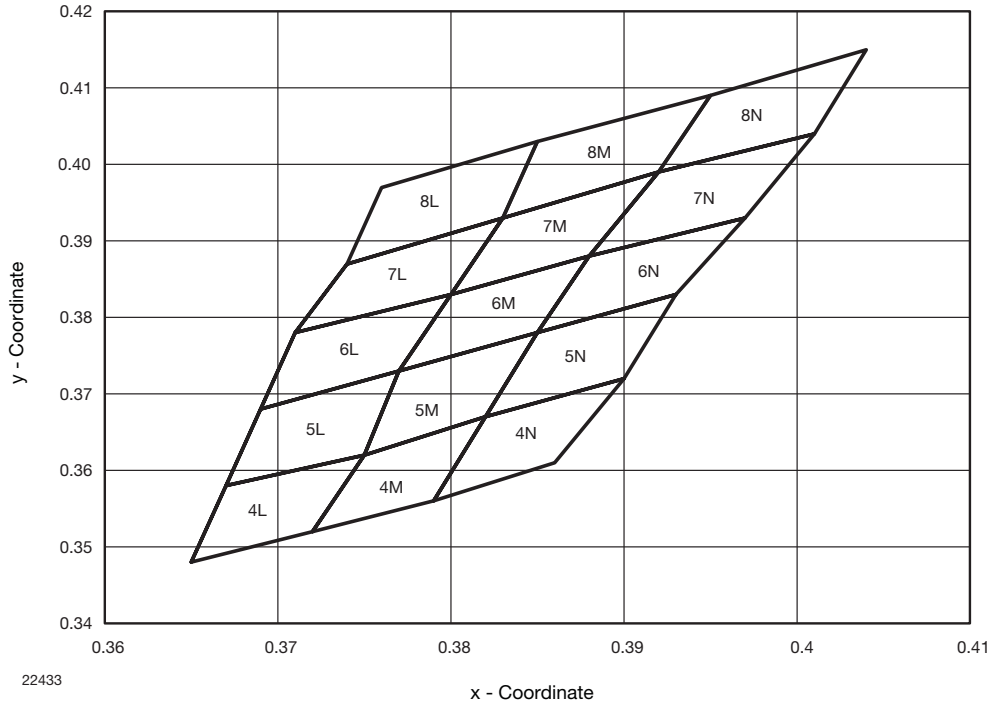


Fig. 1 - Chromaticity Coordinates of Colorgroups

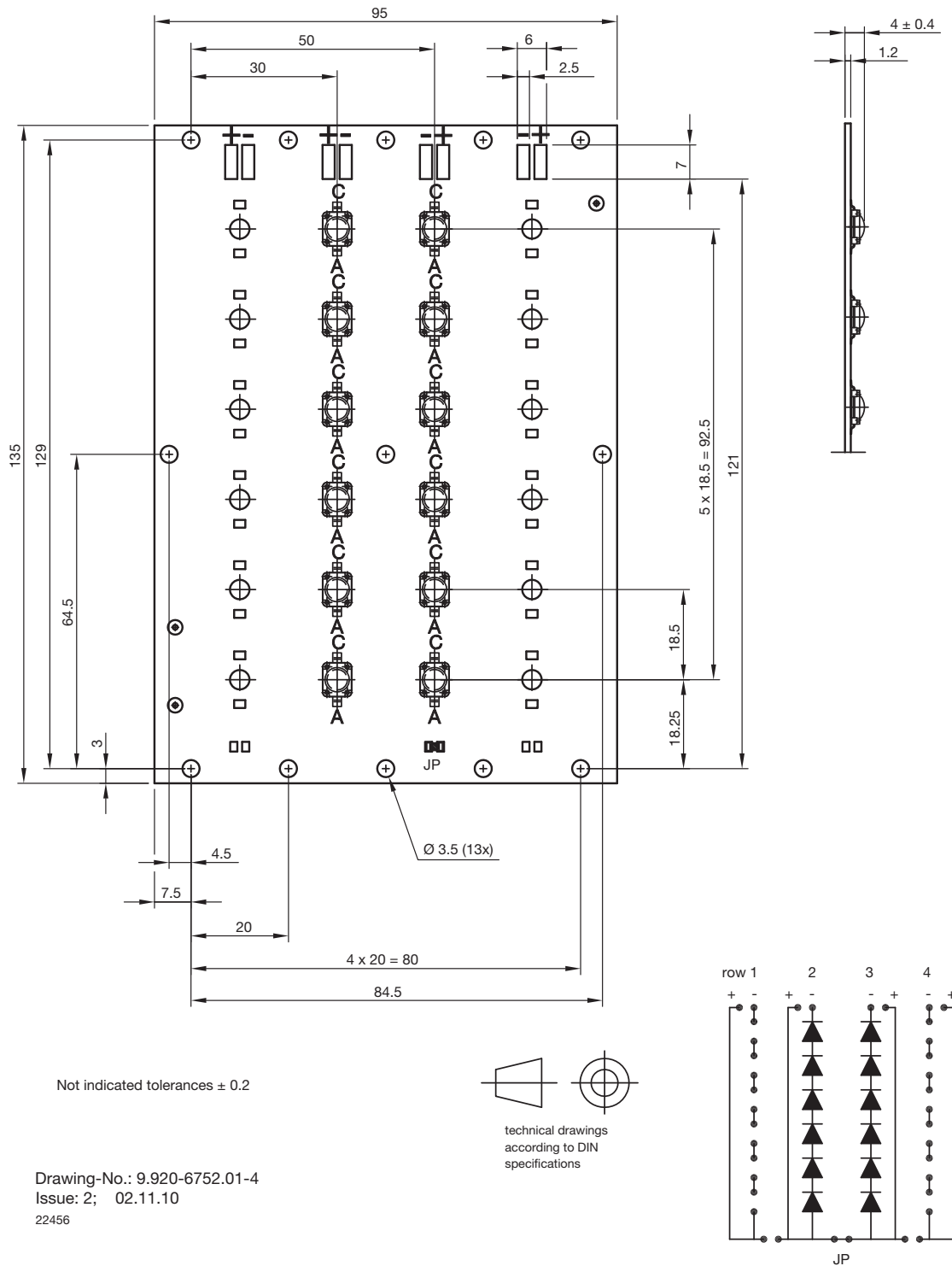
CHROMATICITY COORDINATED GROUPS FOR WHITE SMD LED									
GROUP	X	Y	GROUP	X	Y	GROUP	X	Y	
4L	0.365	0.348	4M	0.372	0.352	4N	0.379	0.356	
	0.367	0.358		0.375	0.362		0.382	0.367	
	0.375	0.362		0.382	0.367		0.390	0.372	
	0.372	0.352		0.379	0.356		0.386	0.361	
5L	0.367	0.358		0.375	0.362		5N	0.382	0.367
	0.369	0.368	0.377	0.373	0.385	0.378			
	0.377	0.373	0.385	0.378	0.393	0.383			
	0.375	0.362	0.382	0.367	0.390	0.372			
6L	0.369	0.368	0.377	0.373	6N	0.385	0.378		
	0.371	0.378	0.380	0.383		0.388	0.388		
	0.380	0.383	0.388	0.388		0.397	0.393		
	0.377	0.373	0.385	0.378		0.393	0.383		
7L	0.371	0.378	0.380	0.383	7N	0.388	0.388		
	0.374	0.387	0.383	0.393		0.392	0.399		
	0.383	0.393	0.392	0.399		0.401	0.404		
	0.380	0.383	0.388	0.388		0.397	0.393		
8L	0.374	0.387	0.383	0.393	8N	0.392	0.399		
	0.376	0.397	0.385	0.403		0.395	0.409		
	0.385	0.403	0.395	0.409		0.404	0.415		
	0.383	0.393	0.392	0.399		0.401	0.404		

# VLSL3112A2, VLSL3124A2

Vishay Semiconductors High Brightness LED Power Module



## PCB BASIC DESIGN VLSL3112A2 DIMENSIONS in millimeters



Assembled with all jumpers. Jumpers can be removed according driver design



### PCB CHARACTERISTICS

- Metal core PCB with typical Al thickness of 800  $\mu\text{m}$
- Prepreg thickness typical 127  $\mu\text{m}$
- Conductive pattern Cu typical 25  $\mu\text{m}$
- Total board thickness: 1 mm  $\pm$  15 %
- Warpage max. 0.75 % of board dimension
- Solder resist on top side
- Shiny white surface
- Galvanic of solder pads pure matte Sn ( $\geq$  0.8  $\mu\text{m}$ ), immersion plated
- Assembled with 12 or 24 VLMW91xxx LEDs. LED position accuracy  $\pm$  0.125 mm from middle axis, horizontal tilt max. 2°

### EMISSION CHARACTERISTIC

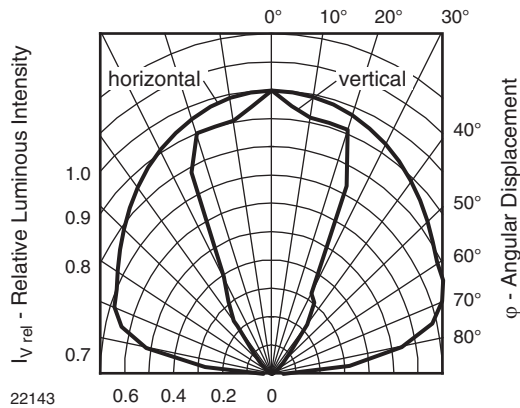


Fig. 2 - Rel. Luminous Intensity vs. Angular Displacement

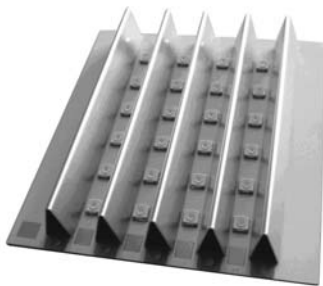
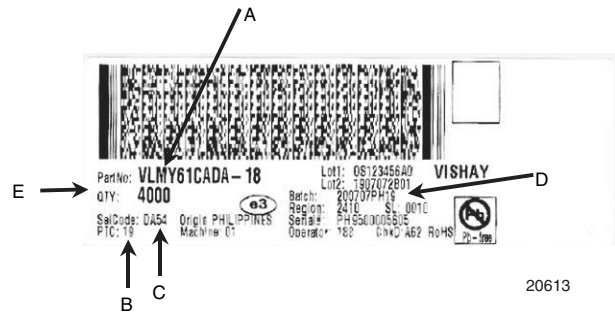


Fig. 3 - Sample Board with Reflectors (for Info only)

### BAR CODE PRODUCT LABEL (example)



- A. Type of component
- B. Manufacturing plant
- C. SEL - selection code (bin):  
e.g.: code for  $V_F$  class (A, B, C)
- D. Batch:  
200707 = year 2007, week 07  
PH19 = plant code
- E. Total quantity



## Disclaimer

ALL PRODUCT, PRODUCT SPECIFICATIONS AND DATA ARE SUBJECT TO CHANGE WITHOUT NOTICE TO IMPROVE RELIABILITY, FUNCTION OR DESIGN OR OTHERWISE.

Vishay Intertechnology, Inc., its affiliates, agents, and employees, and all persons acting on its or their behalf (collectively, "Vishay"), disclaim any and all liability for any errors, inaccuracies or incompleteness contained in any datasheet or in any other disclosure relating to any product.

Vishay makes no warranty, representation or guarantee regarding the suitability of the products for any particular purpose or the continuing production of any product. To the maximum extent permitted by applicable law, Vishay disclaims (i) any and all liability arising out of the application or use of any product, (ii) any and all liability, including without limitation special, consequential or incidental damages, and (iii) any and all implied warranties, including warranties of fitness for particular purpose, non-infringement and merchantability.

Statements regarding the suitability of products for certain types of applications are based on Vishay's knowledge of typical requirements that are often placed on Vishay products in generic applications. Such statements are not binding statements about the suitability of products for a particular application. It is the customer's responsibility to validate that a particular product with the properties described in the product specification is suitable for use in a particular application. Parameters provided in datasheets and/or specifications may vary in different applications and performance may vary over time. All operating parameters, including typical parameters, must be validated for each customer application by the customer's technical experts. Product specifications do not expand or otherwise modify Vishay's terms and conditions of purchase, including but not limited to the warranty expressed therein.

Except as expressly indicated in writing, Vishay products are not designed for use in medical, life-saving, or life-sustaining applications or for any other application in which the failure of the Vishay product could result in personal injury or death. Customers using or selling Vishay products not expressly indicated for use in such applications do so at their own risk. Please contact authorized Vishay personnel to obtain written terms and conditions regarding products designed for such applications.

No license, express or implied, by estoppel or otherwise, to any intellectual property rights is granted by this document or by any conduct of Vishay. Product names and markings noted herein may be trademarks of their respective owners.

## Material Category Policy

**Vishay Intertechnology, Inc. hereby certifies that all its products that are identified as RoHS-Compliant fulfill the definitions and restrictions defined under Directive 2011/65/EU of The European Parliament and of the Council of June 8, 2011 on the restriction of the use of certain hazardous substances in electrical and electronic equipment (EEE) - recast, unless otherwise specified as non-compliant.**

**Please note that some Vishay documentation may still make reference to RoHS Directive 2002/95/EC. We confirm that all the products identified as being compliant to Directive 2002/95/EC conform to Directive 2011/65/EU.**

**Vishay Intertechnology, Inc. hereby certifies that all its products that are identified as Halogen-Free follow Halogen-Free requirements as per JEDEC JS709A standards. Please note that some Vishay documentation may still make reference to the IEC 61249-2-21 definition. We confirm that all the products identified as being compliant to IEC 61249-2-21 conform to JEDEC JS709A standards.**