

QMSS-026-06.75-L-D-A

QMSS-052-06.75-L-D-A

QMSS SERIES

(0.635 mm) .025"

SHIELDED GROUND PLANE HEADER

SPECIFICATIONS

For complete specifications and recommended PCB layouts see www.samtec.com?QMSS

- Insulator Material:** Liquid Crystal Polymer
- Terminal, Ground Plane & Shield Material:** Phosphor Bronze
- Plating:** Au over 50 μ" (1.27 μm) Ni (Tin on Ground Plane Tail)
- Voltage Rating:** 300 VAC mated with QFSS
- Operating Temp:** -55 °C to +125 °C
- RoHS Compliant:** Yes

Board Mates:

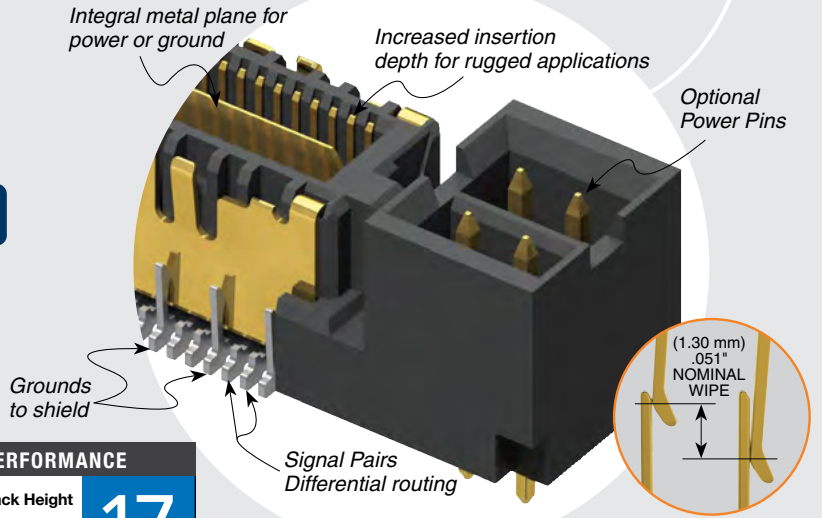
QFSS

Standoffs:

SO

RUGGEDIZED
BY SAMTEC

- Increased insertion depth
- Integral guide post



HIGH-SPEED CHANNEL PERFORMANCE

QMSS-DP/QFSS-DP @ 11 mm Mated Stack Height

Rating based on Samtec reference channel.
For full SI performance data visit Samtec.com or contact SIG@samtec.com

17
Gbps

PROCESSING

- Lead-Free Solderable:** Yes
- SMT Lead Coplanarity:** (0.10 mm) .004" max (026-078)
- Board Stacking:** For applications requiring more than two connectors per board, contact ipg@samtec.com

RECOGNITIONS

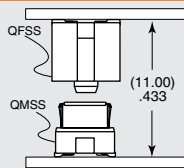
For complete scope of recognitions see www.samtec.com/quality



ALSO AVAILABLE (MOQ Required)

- Headers without Alignment Pins
- 8 Power Pins/End
- 4 or 8 Power Pins/End for (2.36 mm) .093" thick board
- Guide Post
- Edge Mount
- 64 (-DP) and 104 pins per row Contact Samtec.

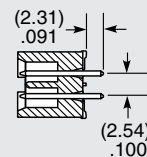
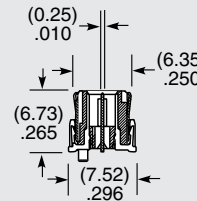
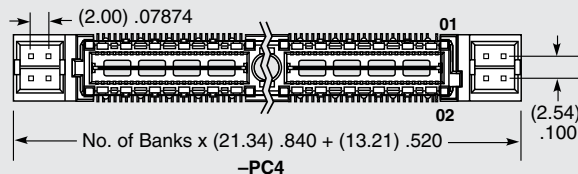
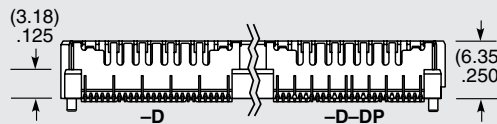
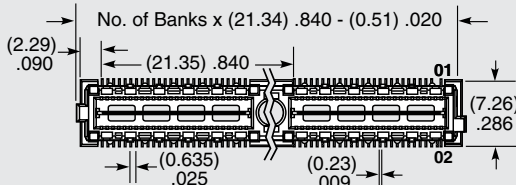
APPLICATION



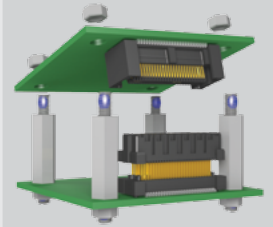
Notes: Patented

Some lengths, styles and options are non-standard, non-returnable.

QMSS	PINS PER ROW NO. OF PAIRS	06.75	PLATING OPTION	TYPE	A	OTHER OPTION
	<p>-026, -052, -078 (52 total pins per bank 40 signals + 12 grounds to shield = -D)</p> <p>-016, -032, -048 (16 pairs per bank = -D-DP)</p>		<p>-L = 10 μ" (0.25 μm) Gold on Signal Pins, Shield and Ground Plane (Tin on Signal Pin tails, and Ground Plane tails)</p>	<p>-D = Single-Ended</p> <p>-D-DP = Differential Pair</p>		<p>-K = (5.50 mm) .217" DIA Polyimide film Pick & Place Pad (N/A with -PC4)</p> <p>-PC4 = 4 Power Pins/End (N/A with -A)</p>



OTHER SOLUTIONS



See SO Series for precision machined standoffs.