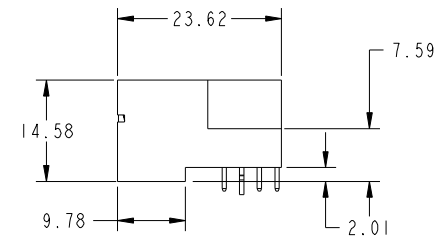
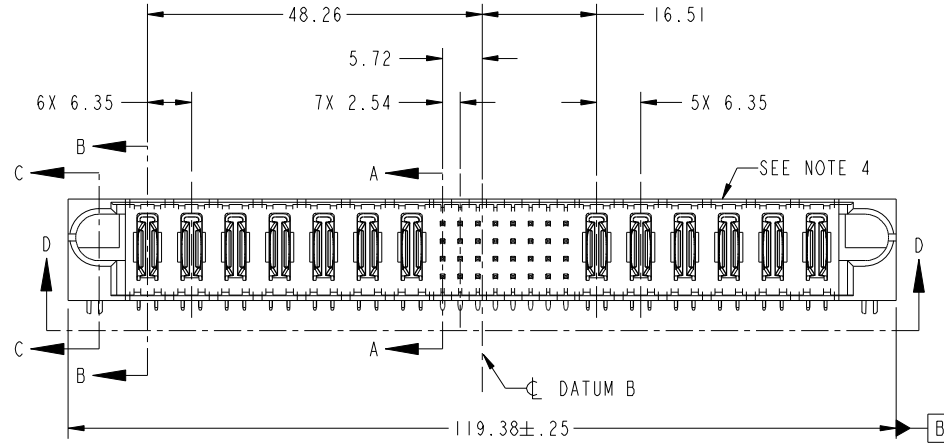
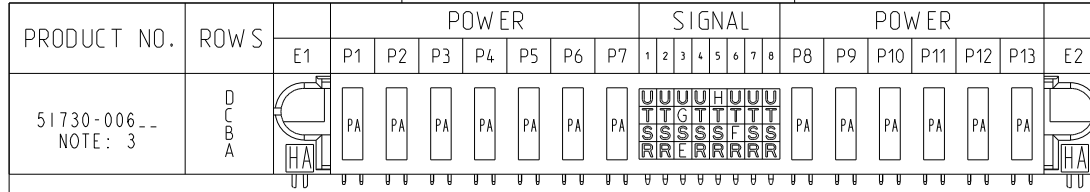


Tous droits strictement reserves. Reproduction ou communication a des tiers interdite sous quelque forme que ce soit sans autorisation écrite du propriétaire. Propriete de c FCI. Droits de reproduction FCI.



All rights strictly reserved. Reproduction or issue to third parties in any form whatever is not permitted without written authority from the proprietor. Property of FCI. Copyright FCI.



CODE	DIM "M" MATING LENGTH	CONTACT TYPE
PA	[N/A]	POWER
HA	[N/A]	HOLD-DOWN
U	[6.86]	SIGNAL
T	[6.86]	SIGNAL
S	[6.86]	SIGNAL
R	[6.86]	SIGNAL
E	[5.59]	SIGNAL
F	[5.59]	SIGNAL
G	[5.59]	SIGNAL
H	[5.59]	SIGNAL

mat'l code				SEE NOTE		tolerances unless otherwise specified		CUSTOMER	
litr	ecn no.	dr	date	linear	0.X ±0.5		COPY		
A	V02906	JWS	12-05-00		0.XX ±0.25		projection		
B	V20009	JWS	01-14-02		0.XXX ±0.10		MIM		
C	DG05-0182	SJ	06/22/05	angles	0° +2°		scale		
D	DG05-0415	GuoJM	10/25/05	dr	J. SHAFFER	01-14-02	product family		
E	DG08-0273	JW	12/26/08	enrg	M. MOSTOLLER	01-14-02	size	PwrBlade	
				chr	M. MOSTOLLER	01-14-02	dwg no	code	
				appd	M. MOSTOLLER	01-14-02	51730-006	213	
sheet index	revision sheet	E 1	E 2	E 3	E 4		scale	sheet 1 of 4	

www.fciconnect.com		title	
7P + 32S + 6P		RIGHT ANGLE SOLDER HEADER	
product family		code	
PwrBlade		213	
size		sheet	
A		1 of 4	
scale		cage code	
1:1		22526	

Pro/E

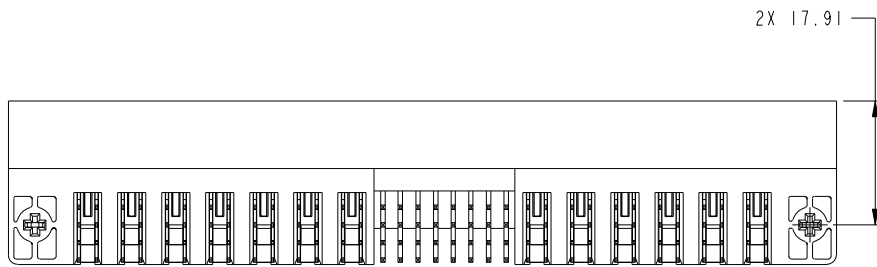
cage code 22526

Tous droits strictement reserves. Reproduction ou communication a des tiers interdite sous quelque forme que ce soit sans autorisation écrite du propriétaire. Propriete de c FCI. Droits de reproduction FCI.

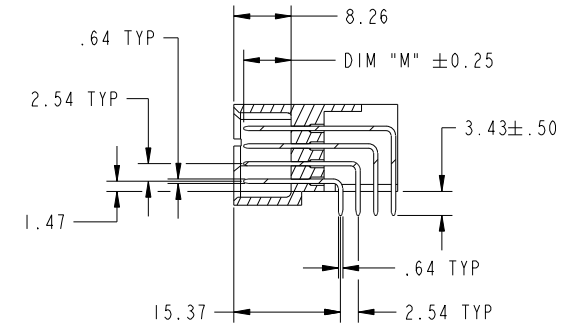


All rights strictly reserved. Reproduction or issue to third parties in any form whatever is not permitted without written authority from the proprietor. Property of FCI. Copyright FCI.

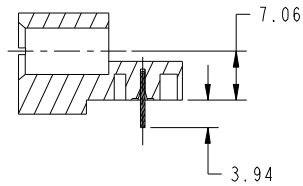
PRODUCT NUMBER  
51730-006--  
NOTE: 3



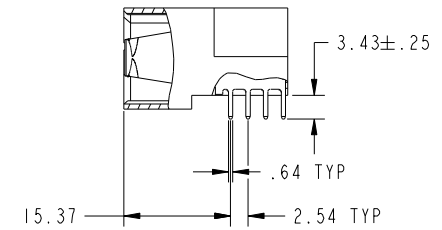
VIEW D-D



SECTION A-A



SECTION C-C



SECTION B-B

mat'l code		SEE NOTE		tolerances unless otherwise specified		CUSTOMER		www.fciconnect.com	
ltr	ecn no.	dr	date	linear	0.X ±0.5	COPY		title	
E					0.XX ±0.25	projection		7P + 32S + 6P	
				angles	0.XXX ±0.10			RIGHT ANGLE SOLDER HEADER	
				dr	0° +2°			product family PwrBlade code	
				enrg	J. SHAFFER 01-14-02	scale		213	
				chr	M. MOSTOLLER 01-14-02	1:1		sheet	
				appd	M. MOSTOLLER 01-14-02	A		2	
sheet index		revision sheet						cage code	
								22526	

Pro/E

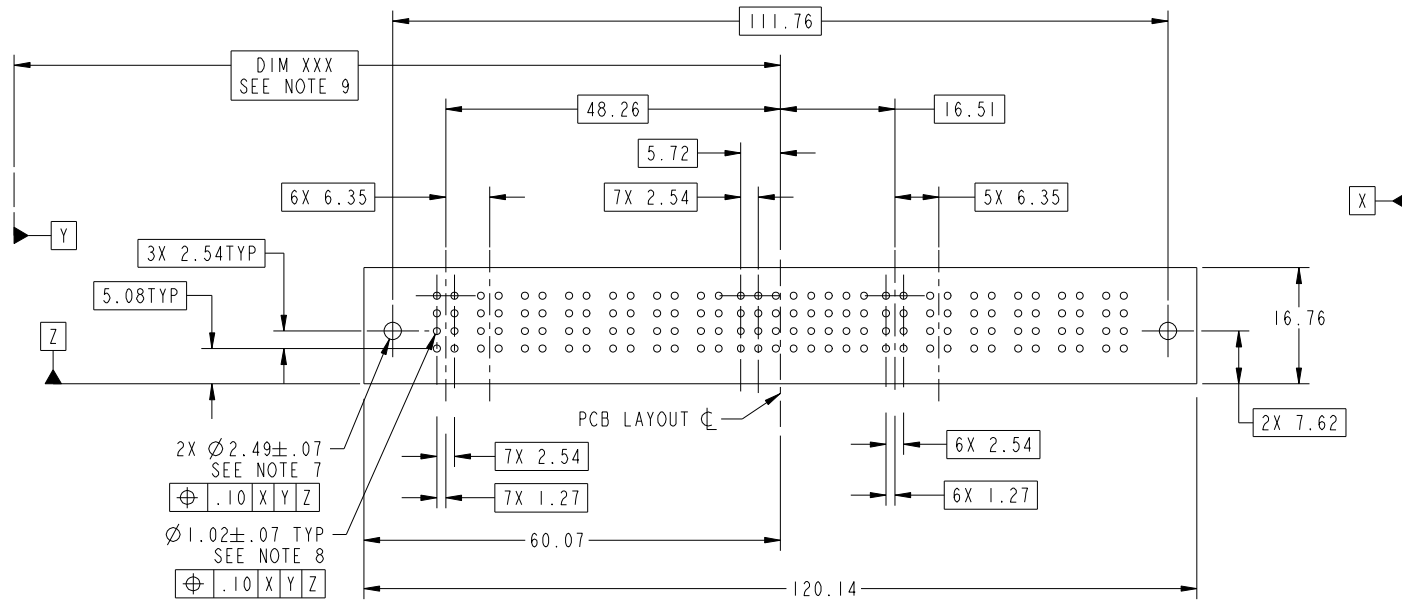
cage code 22526

Tous droits strictement reserves. Reproduction ou communication a des tiers interdite sous quelque forme que ce soit sans autorisation écrite du propriétaire. Propriete de c FCI. Droits de reproduction FCI.



All rights strictly reserved. Reproduction or issue to third parties in any form whatever is not permitted without written authority from the proprietor. Property of FCI. Copyright FCI.

PRODUCT NUMBER  
51730-006--  
NOTE: 3



RECOMMENDED PCB LAYOUT

mat'l code		SEE NOTE		tolerances unless otherwise specified		CUSTOMER		www.fciconnect.com	
ltr	ecn no.	dr	date	linear	0.X ± 0.5	COPY		title	
E					0.XX ± 0.25	projection		7P + 32S + 6P	
				angles	0.XXX ± 0.10			RIGHT ANGLE SOLDER HEADER	
				dr	0° + 2°			product family PwrBlade code	
				enrg	J. SHAFFER 01-14-02	scale		213	
				chr	M. MOSTOLLER 01-14-02	1:1		sheet	
				appd	M. MOSTOLLER 01-14-02	A		3	
sheet index	revision sheet								

cage code 22526

Pro/E

Tous droits strictement reserves. Reproduction ou communication a des tiers interdite sous quelque forme que ce soit sans autorisation écrite du propriétaire. Propriete de c FCI. Droits de reproduction FCI.



All rights strictly reserved. Reproduction or issue to third parties in any form whatever is not permitted without written authority from the proprietor. Property of FCI. Copyright FCI.

PRODUCT NUMBER  
51730-006--  
NOTE: 3

NOTES:

1. DIMENSIONS AND TOLERANCES ARE IN ACCORDANCE WITH ASME Y14.5M, 1994 UNLESS OTHERWISE SPECIFIED.

CONNECTORS NOTES:

2. HOUSING MATERIAL: UL 94 V-0 GLASS FILLED HIGH TEMP THERMO PLASTIC

POWER CONTACT MATERIAL: COPPER ALLOY

○ SIGNAL PIN MATERIAL: COPPER ALLOY

3. PLATING:

△ SEE ITEM 1 & 2 IN PRINT 10064183 FOR PLATING SPEC OF 51730-006; 51730-006LF PRESPECTIVELY

4. "MANUFACTURER" NAME, P/N, AND DATE CODE TO APPEAR ON THIS SURFACE.

5. PRODUCT SPECIFICATION GS-12-149.

PCB - NOTES:

6. ALL HOLE DIAMETERS ARE FINISHED HOLE SIZE.

7. HOLD DOWN THROUGH HOLES ARE UNPLATED.

8.  $\varnothing 1.151 \pm 0.025$  DRILLED HOLES PLATED WITH 0.008 MIN SnPb OVER 0.03 TO 0.08 Cu PLATING TO ACHIEVE  $\varnothing 1.02 \pm .07$  HOLE.

9. "DIM XXX" TO BE DETERMINED BY THE CUSTOMER.

12. A △ SYMBOL WILL BE NEXT TO ANY DIMENSION, VIEW, OR NOTE WHICH HAS BEEN MODIFIED WITH THE CURRENT DRAWING REVISION.

mat'l code				SEE NOTE		tolerances unless otherwise specified		CUSTOMER		FCI www.fciconnect.com	
ltr	ecn no.	dr	date	linear	0.X ± 0.5		COPY		projection	title	
E					0.XX ± 0.25		← MIM →			7P + 32S + 6P RIGHT ANGLE SOLDER HEADER	
					0.XXX ± 0.10		scale			product family PwrBlade code	
				angles	0° + 2°		1:1		size		
				dr	J. SHAFFER	01-14-02			dwg no		
				enrg	M. MOSTOLLER	01-14-02			sheet		
				chr	M. MOSTOLLER	01-14-02			4		
				appd	M. MOSTOLLER	01-14-02			51730-006		
sheet index	revision sheet										

cage code 22526

Pro/E