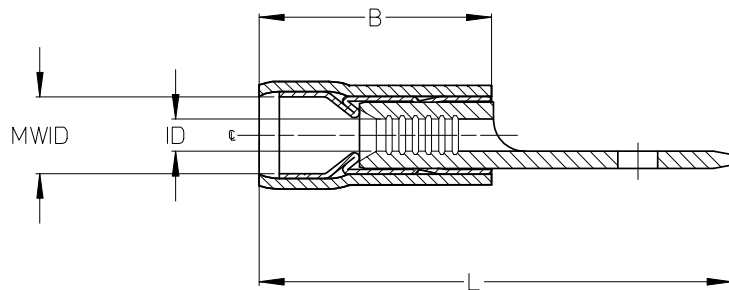
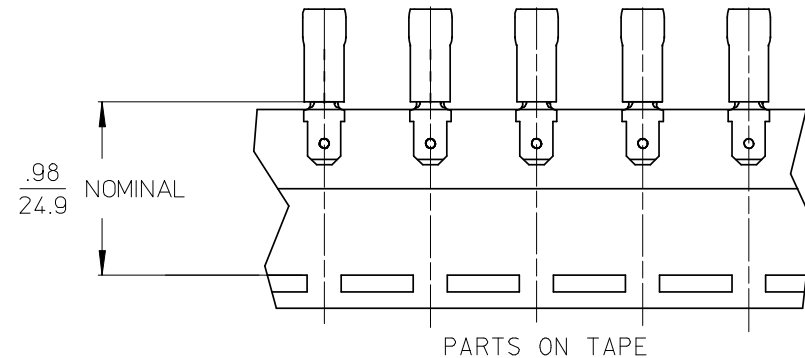
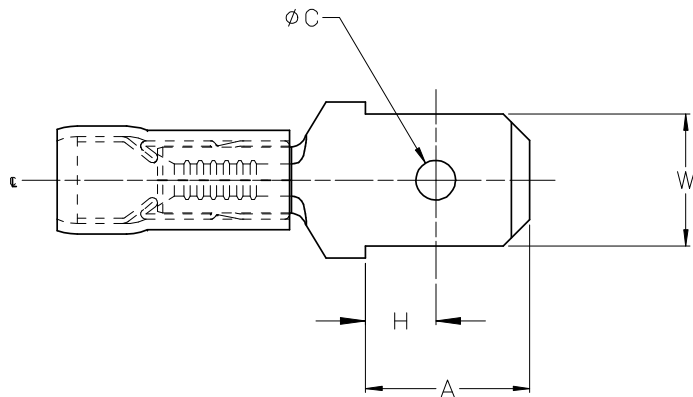


10	9	8	7	6	5	4	3	2	19026							
LOOSE PC MATERIAL NO.	LOOSE PC ENG. NO.	ON TAPE MATERIAL NO.	ON TAPE ENG. NO.	WIRE RANGE	TAB SIZE REFERENCE	COLOR	ID MIN	B REF	MWID	L MAX	W ± .005 0.13	A MIN	H MAX	C ± .007 0.18	TERMINAL MAT'L THICKNESS - REF	TERMINAL FINISH
190260003	AMCT-8	-	-	22-18 AWG (0.38-0.96mm ²)	.250x.032 (6.35x0.81)	RED	.054/1.37	.477/12.12	.138/3.51	.941/23.9	.250/6.35	.30/7.6	.14/3.6	.075/1.91	BRASS, .032/0.81	ZINC CHROMATE
190260004	AMCT-87	190260005	AMCT-87T	22-18 AWG (0.38-0.96mm ²)	.187x.020 (4.75x0.51)	RED	.054/1.37	.477/12.12	.138/3.51	.761/19.3	.187/4.75	.24/6.1	.13/3.3	.055/1.40	BRASS, .020/0.51	ZINC CHROMATE



(A) (ALL NOTES)

NOTES:

- TERMINAL:
MATERIAL: BRASS
FINISH: ZINC CHROMATE
- FERRULE:
MATERIAL: BRASS
FINISH: TIN
- INSULATION MATERIAL: NYLON
- TAB DIMENSIONS PER UL310 SPECIFICATIONS.
- MWID = MAXIMUM WIRE INSULATION DIAMETER
- PART IS ROHS COMPLIANT.

REDWN W/MATL & FIN CHG
EC NO: ETC2007-0081
DRWN:EHILE 2008/01/28
CHKD:MACNEIL 2008/01/28
APPR:JMACNEIL 2008/02/13

QUALITY SYMBOLS
▽=0
▽=0

GENERAL TOLERANCES (UNLESS SPECIFIED)	
	mm INCH
4 PLACES ±---	±---
3 PLACES ±---	±.005
2 PLACES ±0.13	±.01
1 PLACE ±0.25	±---
ANGULAR ±---°	
DRAFT WHERE APPLICABLE MUST REMAIN WITHIN DIMENSIONS	

DIMENSION STYLE MM/IN (A)	
DRAWN BY EF	DATE 1987/03/05
CHECKED BY ---	DATE ---
APPROVED BY ---	DATE ---
MATERIAL NO. SEE CHART	
SIZE B	

SCALE 4:1	DESIGN UNITS INCH	THIRD ANGLE PROJECTION
TITLE MALE QUICK DISCONNECT, AVIKRIMP		
MOLEX INCORPORATED		
MATERIAL NO. SD-19026-001	DOCUMENT NO.	SHEET NO. 1 OF 1
THIS DRAWING CONTAINS INFORMATION THAT IS PROPRIETARY TO MOLEX INCORPORATED AND SHOULD NOT BE USED WITHOUT WRITTEN PERMISSION		