



Raspberry Pi HDMI LCD (5 inch)

SKU 114990834

Raspberry Pi HDMI LCD (5 inch) is a low-cost 5 inch Resistive Touch Screen LCD, HDMI interface, designed for Raspberry Pi for Raspberry Pi.



Description

What is Raspberry Pi 5inch HDMI LCD

Raspberry Pi HDMI LCD (5 inch) is a low-cost 5 inch Resistive Touch Screen LCD, HDMI interface, designed for Raspberry Pi for Raspberry Pi.

Key Features

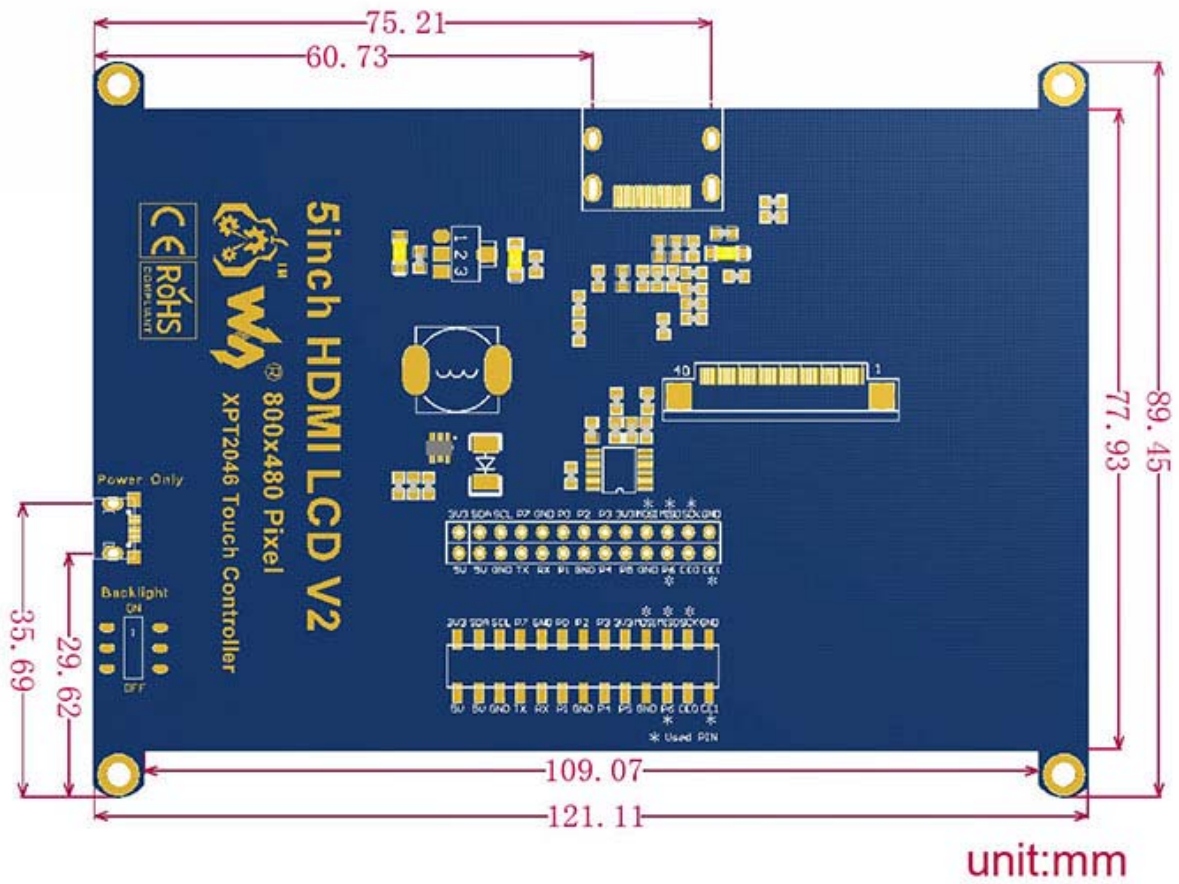
- 800×480 high resolution, touch control
- Compatible and Direct-connect with any revision of Raspberry Pi (except the Pi 1 model B or Pi Zero, which requires an HDMI cable)

- Drivers provided (works with your own Raspbian/Ubuntu directly)
- HDMI interface for displaying, no I/Os required (however, the touch panel still needs I/Os)
- Back light control to lower power consumption
- High quality immersion gold surface plating

Interface

PIN NO.	SYMBOL	DESCRIPTION
1, 17	3.3V	Power positive (3.3V power input)
2, 4	5V	Power positive (5V power input)
3, 5, 7, 8, 10, 11, 12, 13, 15, 16, 18, 24	NC	NC
6, 9, 14, 20, 25	GND	Ground
19	TP_SI	SPI data input of Touch Panel
21	TP_SO	SPI data output of Touch Panel
22	TP_IRQ	Touch Panel interrupt, low level while the Touch Panel detects touching
23	TP_SCK	SPI clock of Touch Panel
26	TP_CS	Touch Panel chip selection, low active

Dimensions



Part List

- 5inch HDMI LCD x 1
- HDMI connector x 1
- Touch pen x 1
- RPi screws pack (4pcs) x 1
- DVD x 1