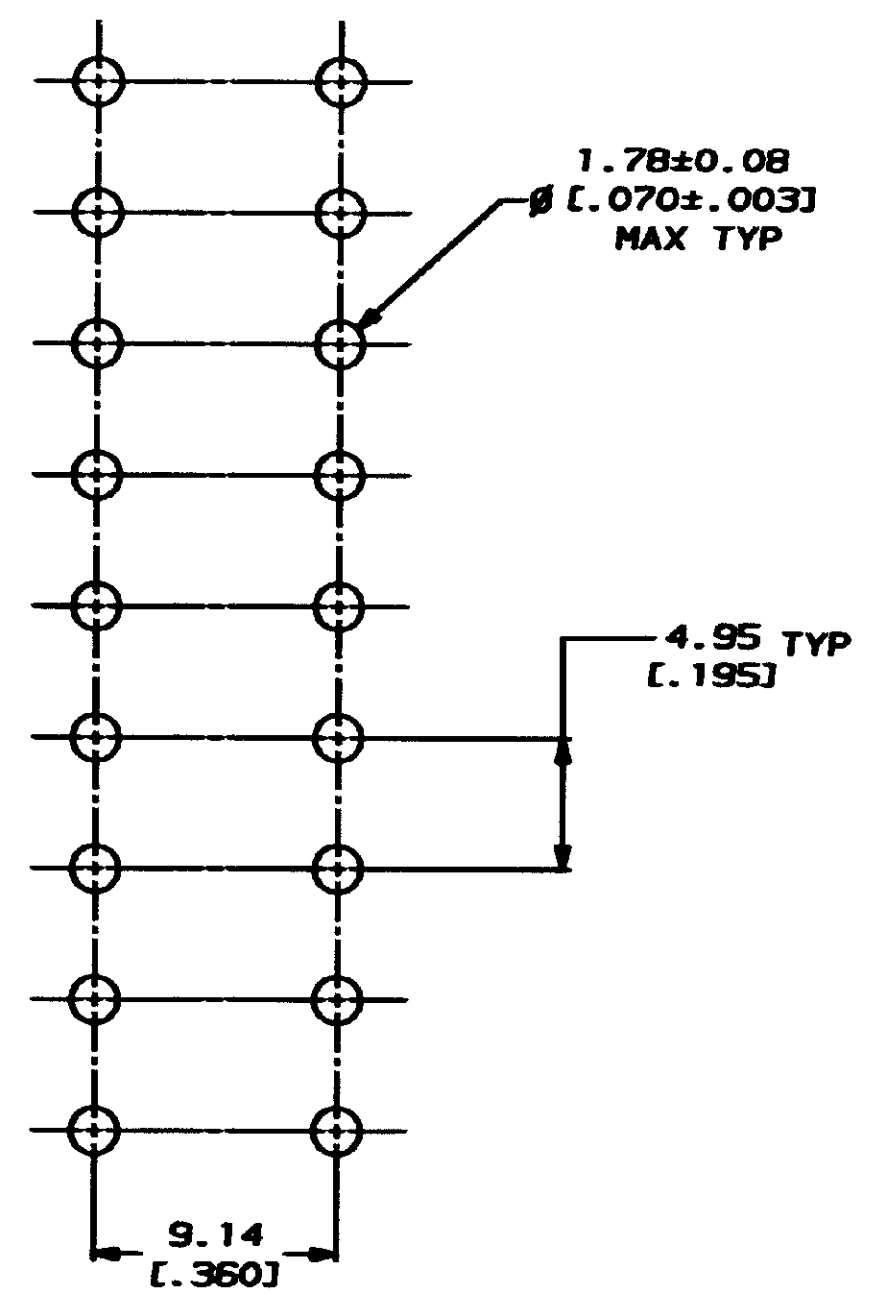
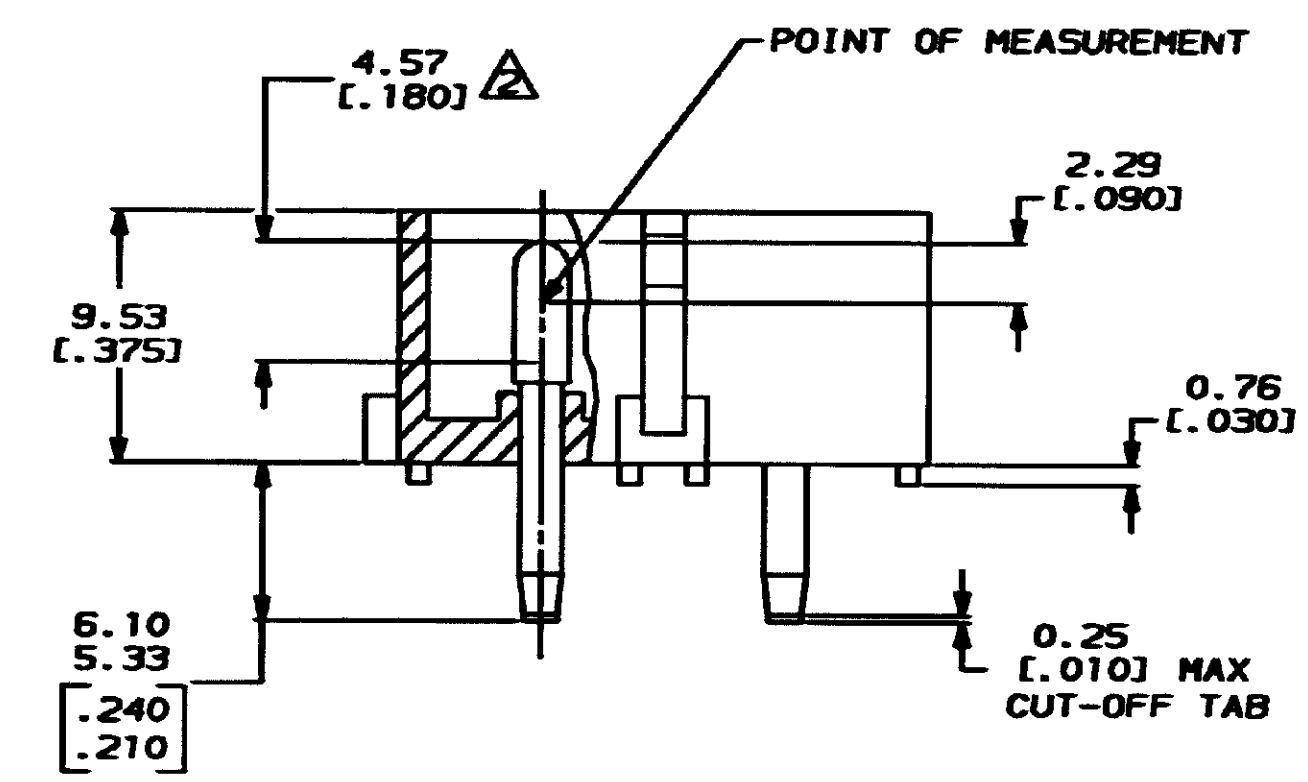
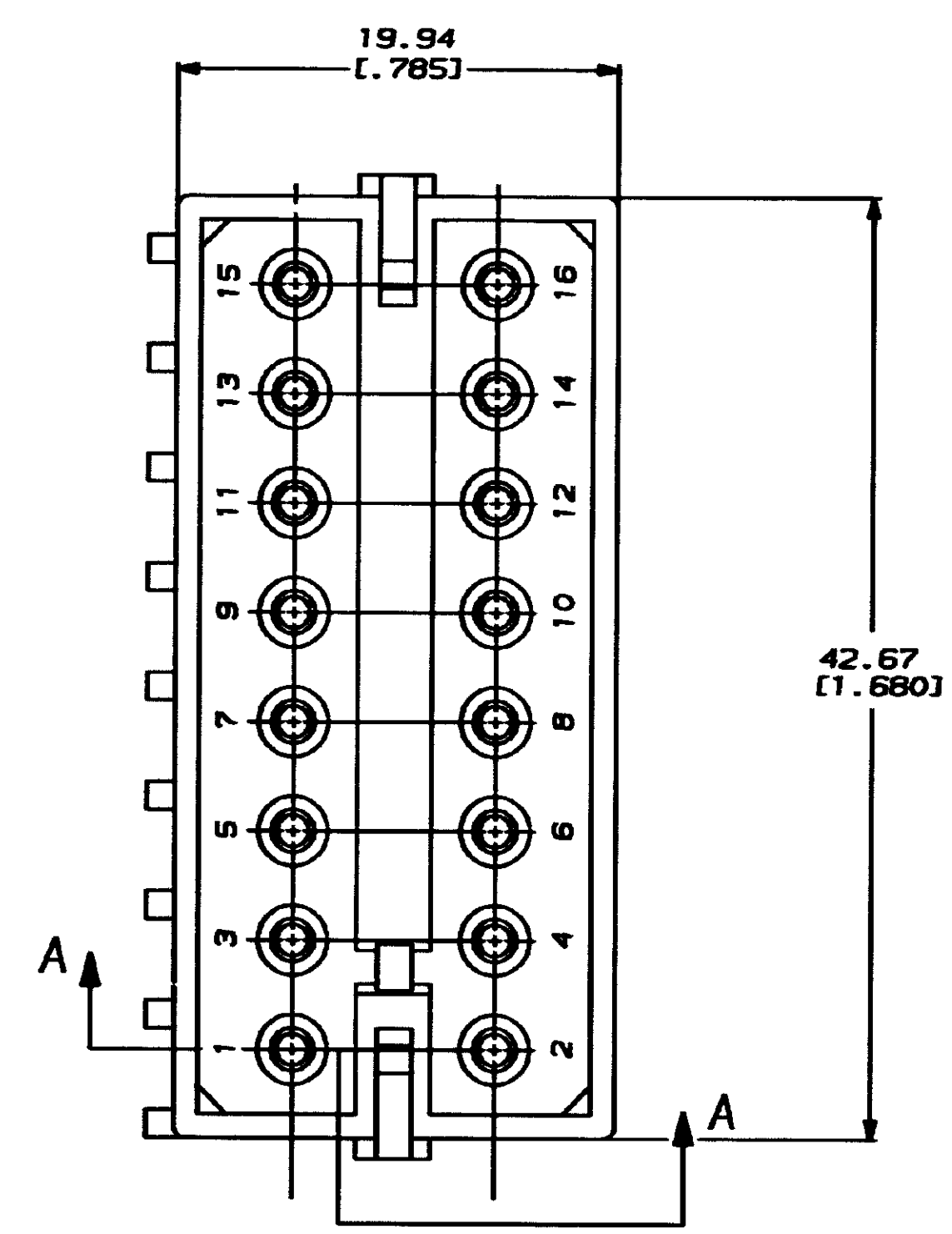


THIS DRAWING IS UNPUBLISHED. RELEASED FOR PUBLICATION .18  
 © COPYRIGHT 19 BY AMP INCORPORATED. ALL INVENTORIAL RIGHTS RESERVED.

REV. NO.		DATE		DESCRIPTION		BY	APPD
CM	53			N	REV & REDMN PER ECN CH-11	10-29-83	



RECOMMENDED MOUNTING HOLE PATTERN FOR 3.18 [0.125] THICK P.C. BOARD



SECTION A-A

- PARTS MUST COMPLY WITH AMP SOLDERABILITY SPECIFICATION 109-11-3.
- CONTACT IS PLATED OVERALL WITH 0.00127 [0.00050] NICKEL, THEN 0.00076 [0.00030] GOLD OVER CONTACT LENGTH INDICATED AND MATTE TIN ON SOLDER TAIL END.
- DIMENSIONS IN BRACKETS ARE IN INCHES.

**METRIC**

THIS DRAWING IS A CONTROLLED DOCUMENT FOR AMP INCORPORATED. IT IS SUBJECT TO CHANGE AND THE CONTROLLING ENGINEERING ORGANIZATION SHOULD BE CONTACTED FOR THE LATEST REVISION.

COPPER ALLOY, GOLD		NYLON, 6/6, NATURAL		350427-2	
COPPER ALLOY, PRE-TIN		NYLON, 6/6, NATURAL		350427-1	
PIN CONTACT MATERIAL AND FINISH		HOUSING MATERIAL AND COLOR		PART NO	
DO NOT SCALE PRINT. UNLESS SPECIFIED DIMENSIONS IN mm (INCHES) TOLERANCES ON: 2 PLC DEC ± 0.13 (0.005) 3 PLC DEC ± - ANGLES ± -	DR 10-29-83 K. SALMON	<b>AMP</b> AMP Incorporated Harrisburg, PA 17105-3508			
SEE TABLE	CHK 10-29-83 R. SAUNG				
MATERIAL	APPD 11-9-83 C. MARTIN	NAME <b>HEADER ASSEMBLY,          16 CIRCUIT,          COMMERCIAL MATE-N-LOK™</b>			
FINISH	APPD 11-9-83 C. MARTIN				
SEE TABLE	PRODUCT SPEC -	SIZE	CAGE CODE	DRAWING NO	
	APPLICATION SPEC -	D	00779	C-350427	
	WEIGHT -	SCALE	4:1	SHEET 1 OF 1	

CUSTOMER DRAWING

AMP 100-3 REV 3-82