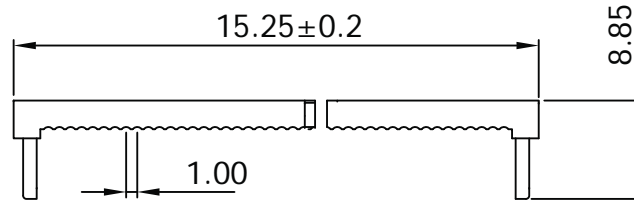
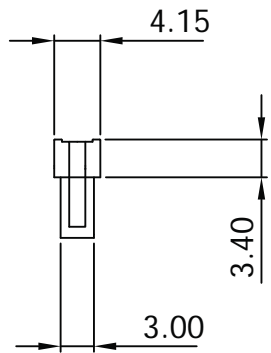


## I.D.C. SOCKET DUAL-ROW

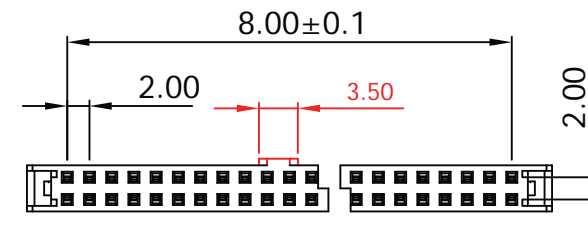
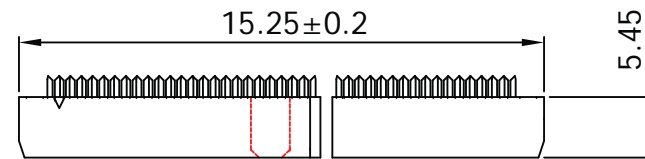
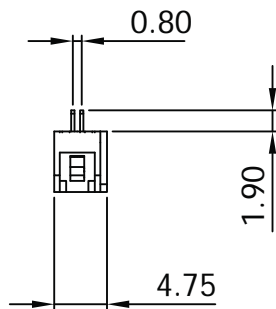



### Material:

- Insulator: P.B.T. 30% Glass Fiber, UL 94V-0
- Contact Material: Phosphor Bronze, Gold flash over Nickel

### Electrical:

- Current Rating: 1Amp DC
- Insulation Resistance: 1,000MΩ Min.
- Dielectric Withstanding: 500V AC
- Operating Temperature: -55°C ~ +105°C



Scale	1:1					Date	Name	Title IDC Socket - 10 contact Gold flash, 2.00mm pitch, w/central polarisation, w/strain relief	
TOLERANCE						Drawn	19.10.11	Chappell	ASSMANN WSW-No. <b>AWP2-10-7241</b>
X.X	±0.40					Approved			
X.XX	±0.25								Drawing-No.
X.XXX	±0.15								rev00
DIM	TOL								Sheet
X.°	±3°	①	Updated part number	09.08.13	Wilson			Replace	1/1
X.X°	±X°	①	Modification	Date	Name				
Angle	TOL	Id.				<small>1840 W. Drake Drive, Suite 101 • Tempe, AZ 85283 Toll Free: 1-877-277-6266 • Email: info@assmann.us</small>			

Unit: mm



1

2

3

4

5

6

7