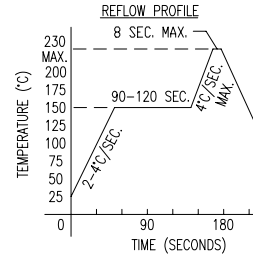
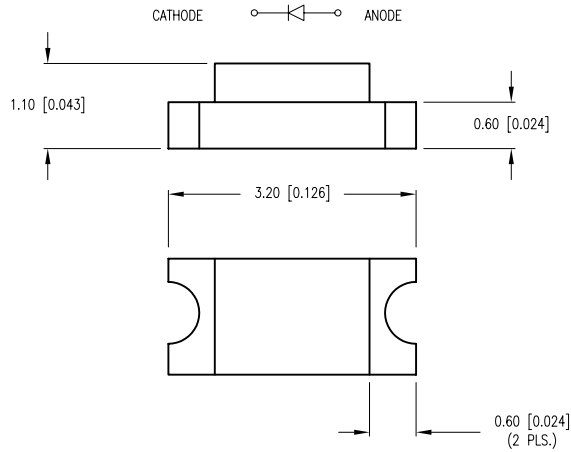
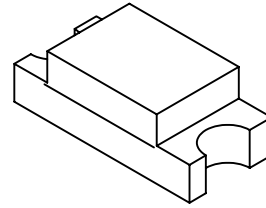
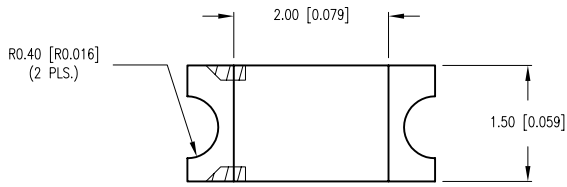


|             |                                     |      |      |
|-------------|-------------------------------------|------|------|
| PART NUMBER | OED-EL1206C160-TR                   | REV. | A    |
| DATE        | E.C.N. NUMBER AND REVISION COMMENTS |      | REV. |
| 11.11.11    | E.C.N. #11768/10BRDR.               |      | A    |



**[A] ELECTRO-OPTICAL CHARACTERISTICS  $T_a=25^\circ\text{C}$   $I_f=20\text{mA}$**

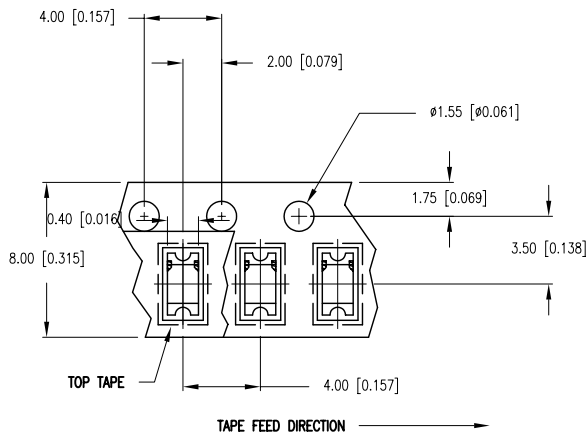
| PARAMETER          | MIN | TYP      | MAX | UNITS   | TEST COND           |
|--------------------|-----|----------|-----|---------|---------------------|
| PEAK WAVELENGTH    |     | 940      |     | nm      |                     |
| SPECTRAL BANDWIDTH |     | 45       |     |         |                     |
| FORWARD VOLTAGE    |     | 1.2      | 1.5 | Vf      |                     |
| REVERSE VOLTAGE    | 5.0 |          |     | Vr      | $I_f=10\mu\text{A}$ |
| RADIANT INTENSITY  |     | 0.8      | 3.5 | mW/SR   | $I_f=20\text{mA}$   |
| HALF ANGLE         |     | $\pm 80$ |     | DEGREES |                     |

EPOXY LENS FINISH: WATER CLEAR

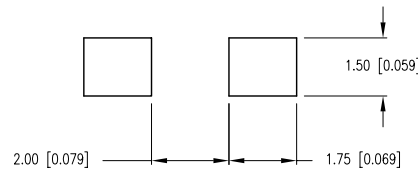
**LIMITS OF SAFE OPERATION AT 25°C**

| PARAMETER             | MAX        | UNITS |
|-----------------------|------------|-------|
| PEAK FORWARD CURRENT* | 1          | mA    |
| STEADY CURRENT        | 65         | mA    |
| POWER DISSIPATION     | 130        | mW    |
| DERATE FROM 25°C      | -1.2       | mW/°C |
| OPERATING TEMP.       | -40 TO +85 | °C    |
| STORAGE TEMP.         | -40 TO +85 | °C    |

\*  $t < 100\mu\text{s}$ , DUTY  $\leq 1\%$



RECOMMENDED SOLDER PAD LAYOUT



**NOTES:**

- 2,000 PIECES PER REEL.
- THE CATHODE IS ORIENTED TOWARDS THE TAPE SPROCKET HOLE

**CAUTION: MOISTURE SENSITIVE DEVICE**

- SHELF LIFE IN SEALED BAG:  
12 MONTHS AT  $<40^\circ\text{C}$  AND  $<90\%$  RELATIVE HUMIDITY (RH).
- AFTER THIS BAG IS OPENED, DEVICES HAVE TO BE MOUNTED WITHIN 48 HOURS OR STORED AT  $<30\%$  RH.

\*UNLESS OTHERWISE SPECIFIED TOLERANCES PER DECIMAL PRECISION ARE: X= $\pm 1$  ( $\pm 0.039$ ), X.X= $\pm 0.5$  ( $\pm 0.020$ ), X.XX= $\pm 0.25$  ( $\pm 0.010$ ), X.XXX= $\pm 0.127$  ( $\pm 0.005$ ). LEAD SIZE= $\pm 0.05$  ( $\pm 0.002$ ), LEAD LENGTH= $\pm 0.75$  ( $\pm 0.030$ ). MIN= $^{+0.00}$ / $^{-0.00}$  DECIMAL PRECISION MAX.= $^{+0.00}$ / $^{-0.00}$  DECIMAL PRECISION



290 E. HELEN ROAD  
PALATINE, IL 60067-6976  
PHONE: +1.847.359.2790  
FAX: +1.847.359.6538  
WEB: WWW.LUMEX.COM

3.2 x 1.5mm P.C.B. 940nm IR EMITTING DIODE, 1206 SMD PACKAGE, WATER CLEAR LENS.

\*\*THE SPECIFICATIONS MAY CHANGE AT ANY TIME WITHOUT NOTICE DUE TO NEW MATERIALS OR PRODUCT IMPROVEMENT.\*\*

CONFIDENTIAL INFORMATION  
THE INFORMATION CONTAINED IN THIS DOCUMENT IS THE PROPERTY OF LUMEX INC. EXCEPT AS SPECIFICALLY AUTHORIZED IN WRITING BY LUMEX INC., THE HOLDER OF THIS DOCUMENT SHALL KEEP ALL INFORMATION CONTAINED HEREIN CONFIDENTIAL AND SHALL PROTECT SAME IN WHOLE OR IN PART FROM DISCLOSURE AND DISSEMINATION TO ALL THIRD PARTIES.

|        |           |           |      |
|--------|-----------|-----------|------|
| DATE:  | 11.11.11  | DRAWN BY: | AB   |
| PAGE:  | 1 OF 1    | CHKD BY:  | SS   |
| SCALE: | NTS       | APRVD BY: | KF   |
| UNIT:  | mm [INCH] |           | (Pb) |