

PRODUCT NUMBER	PITCH
KDxx10x1A0J0G	3.50 mm

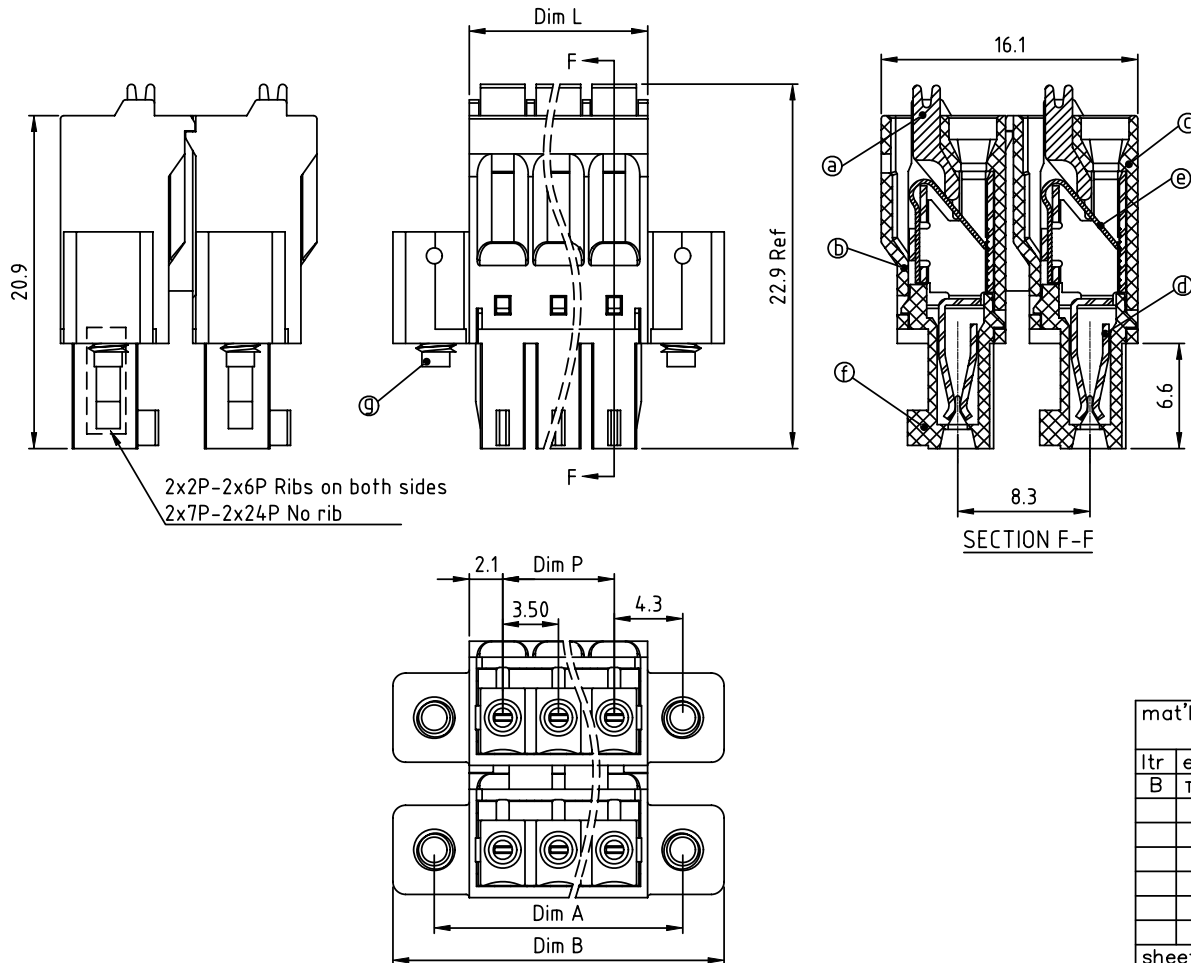
Dim L=(N/2-1)×3.5+4.2
Dim P=(N/2-1)×3.5
Dim A=(N/2-1)×3.5+8.6
Dim B=(N/2-1)×3.5+13.8

N=Number of poles

POLES	Tolerance
2×2P-2×6P	±0.15
2×7P-2×12P	±0.25
2×13P-2×18P	±0.30
2×19P-2×24P	±0.40

PART NO.: KD xx 1 0 x 1 A0J0 G

Solid block	0	Housing Color	Black (RAL9005)	RoHS compliant	(lead<4%)
No. of poles	5		Green(RAL6018/T)	In copper Alloy	
04 2x2 poles	6		Blue (RAL5015/A)		
06 2x3 poles	8		Grey(RAL7035/D)		
...	...				
48 2x24 poles					



Material:

- ItemⒶ Terminal lever: Thermoplastic (UL94V-0) Orange (RAL2011/P)
- ItemⒷ Top housing: Thermoplastic (UL94V-0)
- ItemⒸ Terminal back housing: Thermoplastic (UL94V-0)
- ItemⒹ Female contact: PhBz, Bright Tin plated over Nickel [lated
- ItemⒺ Spring clamp: Stainless steel
- ItemⒻ Bottom housing: Thermoplastic (UL94V-0)
- ItemⒼ Flange screw: Steel Zinc plating M2.5"+/-" combination type

Electrical:

- Voltage rating: 160 V
- Current rating: 5.5 A
- Wire range:
- Solid wire(AWG): 16-24
- Stranded wire(AWG): 16-24
- Wire strip length: 9-10 mm
- Withstanding Voltage: 1.32 KV
- Operating temperature: -40°C to +115°C
- Safety Approval:

mat'l. code		surface ASME Y14.5 ✓	tolerance ASME Y14.5	projection 	product family TERMINAL BLOCK
ltr	ecn no	dr	date	tolerances unless otherwise specified	title TERMINAL BLOCK
B	T-24176	HF	052816		
			angles	X.±0.5	scale MM
			⊥	X.X±0.3	
			X°±1°	X.XX±0.1	scale
		dr	EVIN ZHONG	052014	dwg no sheet 1 of 1 size A4
		enr	EVIN ZHONG	052014	
		chr	HANKE FENG	052014	
		appd	SHI JUN	052014	
sheet index	revision	B			type CUSTOMER Drawing
	sheet	1			