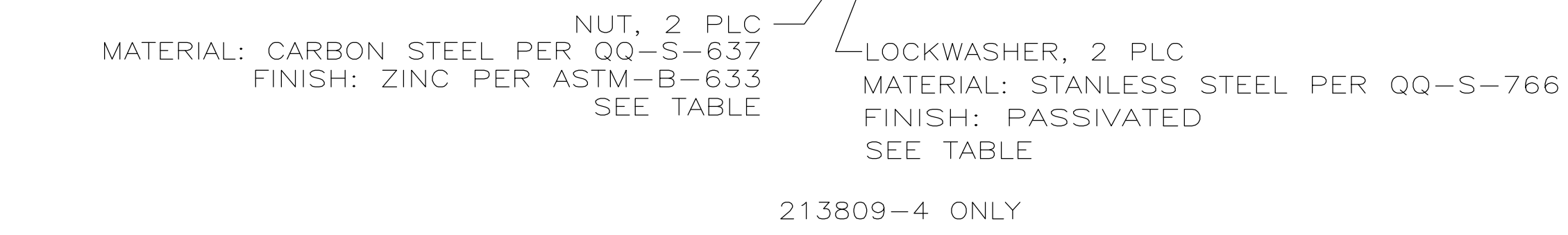
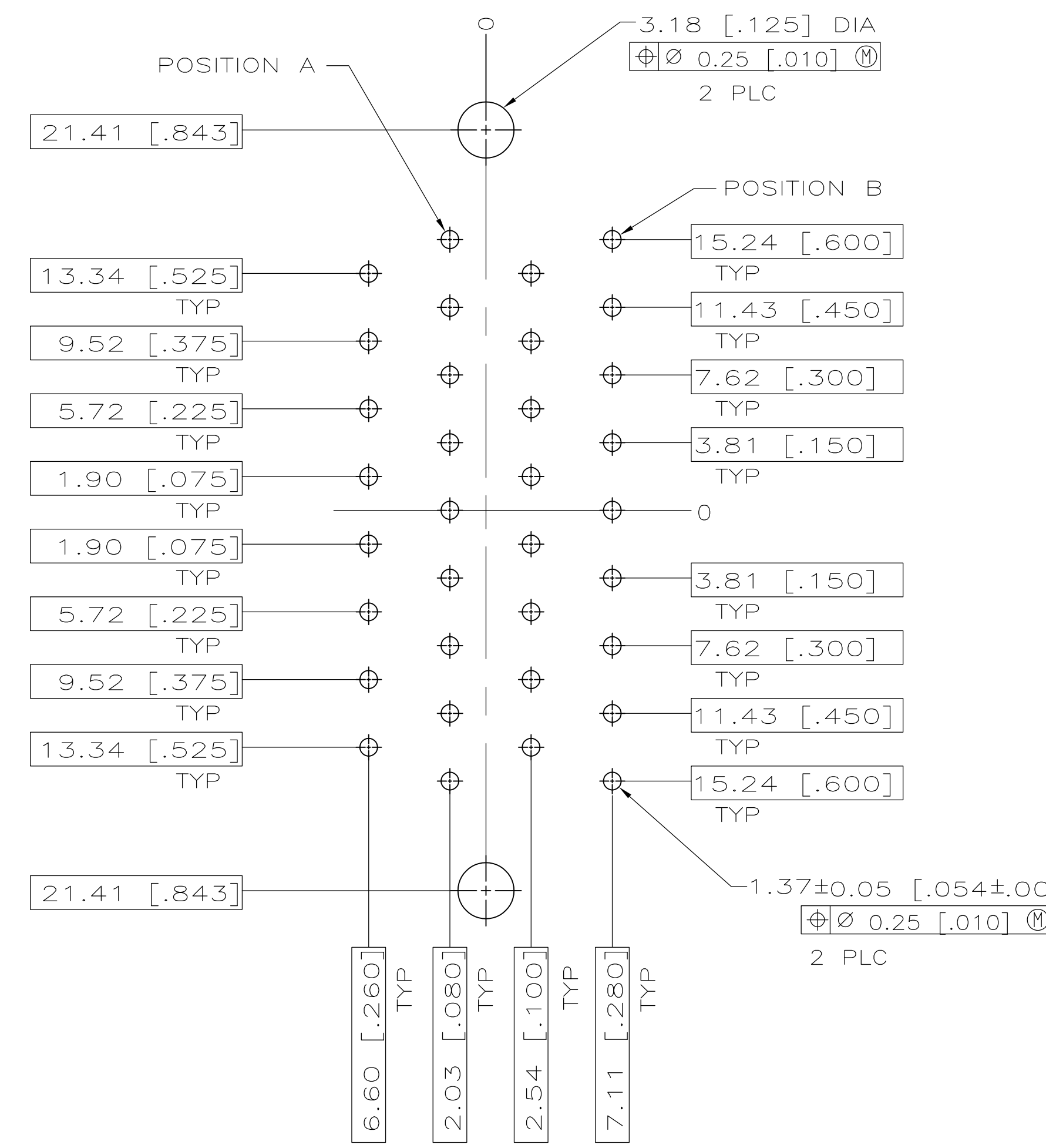
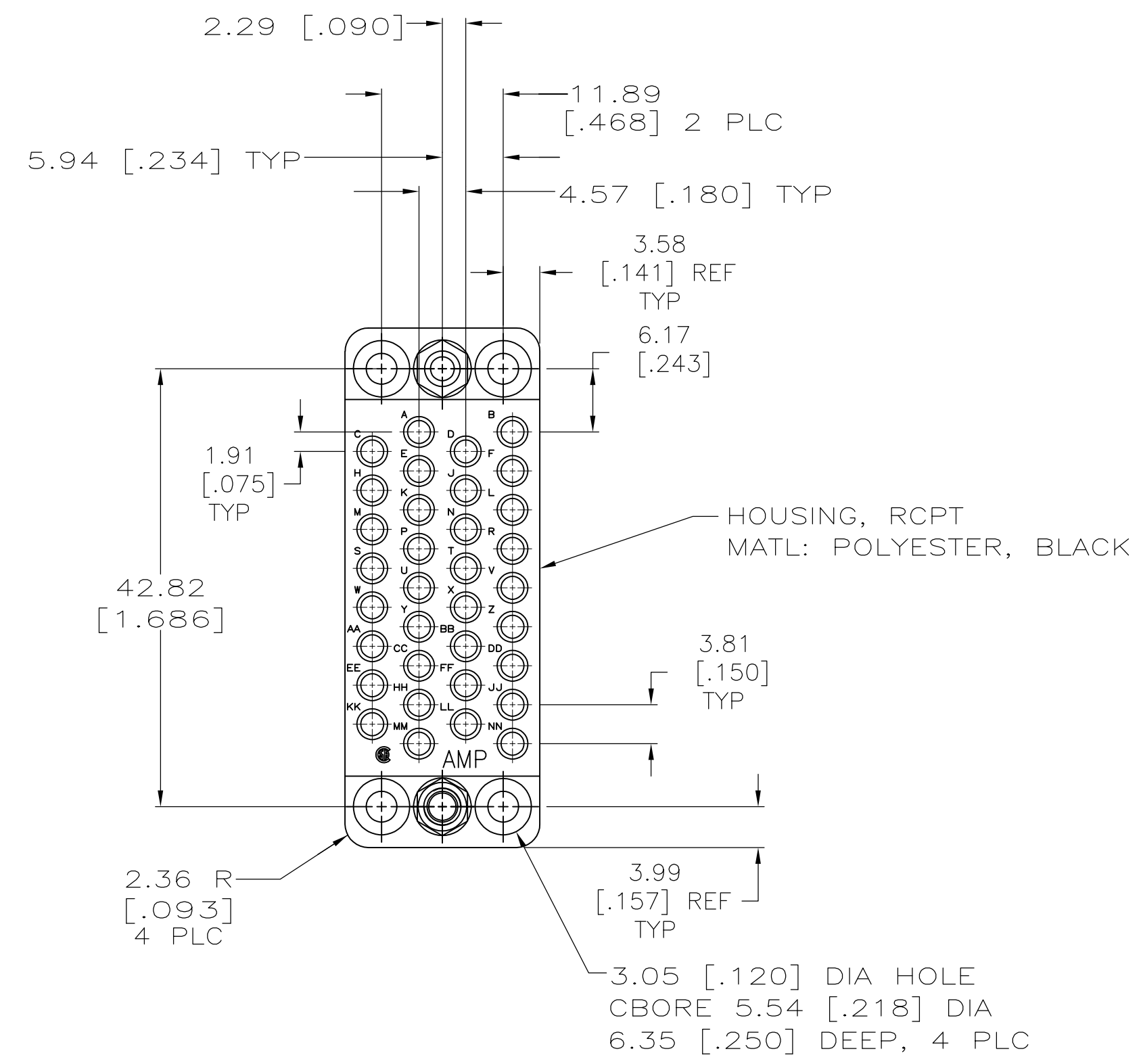
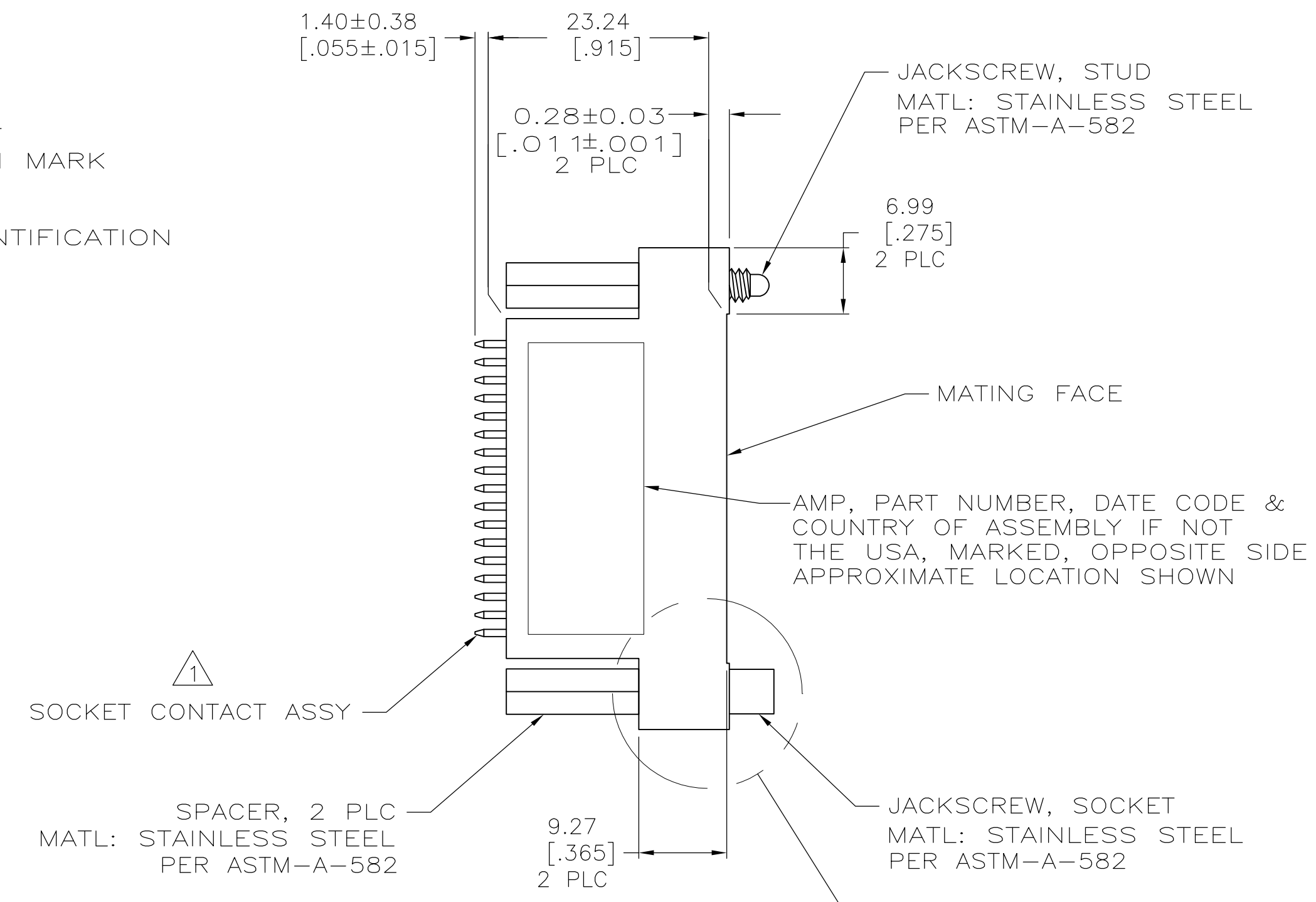
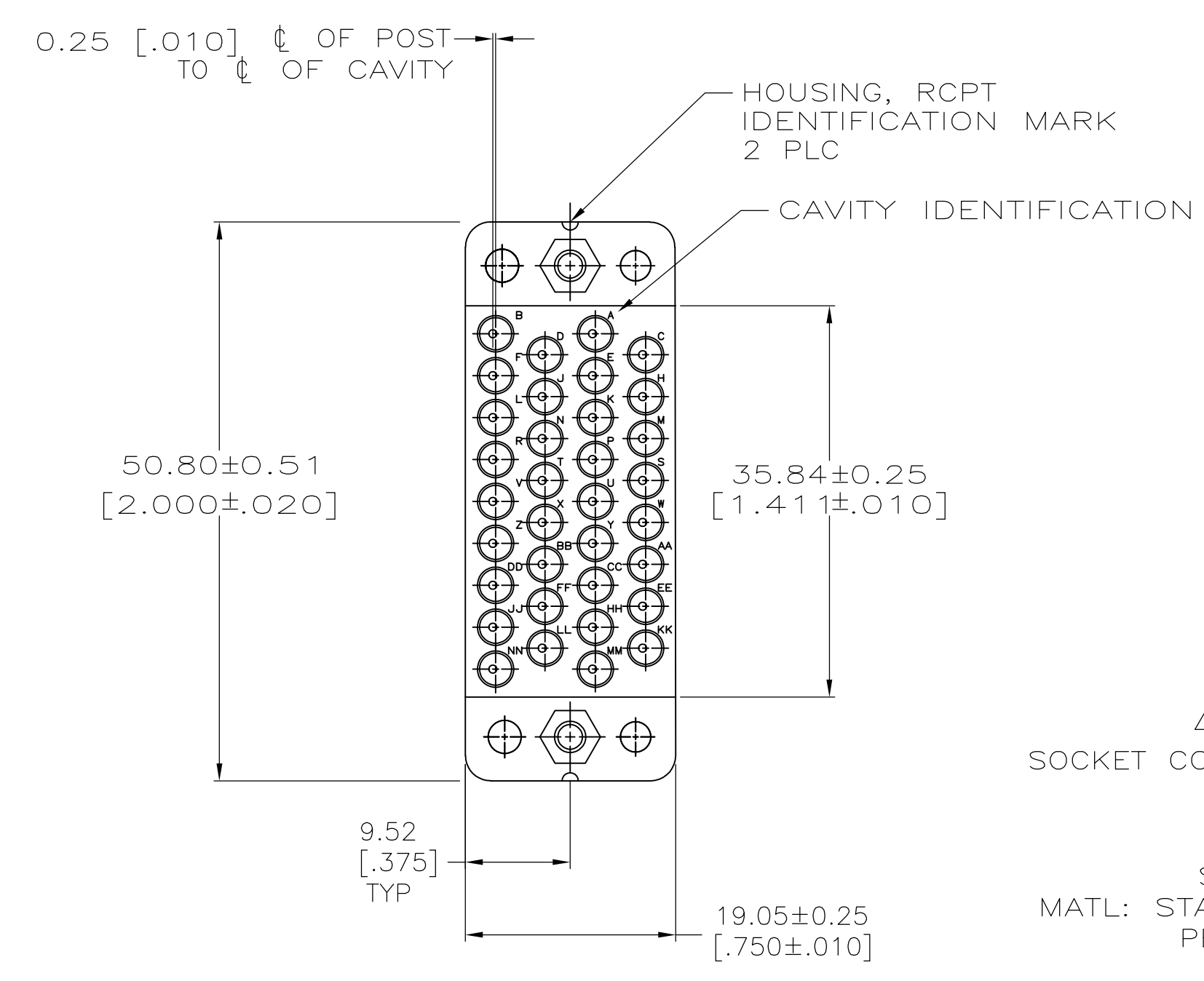


LOC		DIST		REVISIONS			
F	LTR	DESCRIPTION	DATE	DWN	APVD		
F		REVISED PER ECO-07-024895	10/22/07	SS	GS		
F1		REVISED PER ECO-09-020689	25AUG09	KK	AEG		



- SOCKET CONTACT ASSEMBLY BODY-MATERIAL: BRASS PER MIL-C-50 FINISH: 0.76um [.000030] MIN GOLD PER MIL-G-45204 FOR A LENGTH OF 5.08 [.200] MIN FROM MATING END, 2.54um [.000100] MIN TIN-LEAD PER MIL-T-10727 FOR A LENGTH OF 6.35 [.250] MIN FROM OPPOSITE END, BOTH OVER 1.27um [.000050] MIN NICKEL PER QQ-N-290. SPRING-MATERIAL: STAINLESS STEEL PER QQ-S-766. POST-MATERIAL: BRASS PER ASTM-B-134 FINISH: 2.54um [.000100] MIN TIN-LEAD PER MIL-T-10727 OVER 1.27um [.000050] MIN NICKEL PER QQ-N-290.
- SOCKET CONTACT ASSEMBLY IS SELECTIVELY LOADED AT CIRCUITS A,B,C,D,E,F,H,J,K,P,R,S,T,U,V,W,X,Y,AND AA.
- SOCKET CONTACT ASSEMBLY IS SELECTIVELY LOADED AT CIRCUITS A,B,C,D,E,F,H,J,K,L,N,P,R,S,T,U,V,W,X,Y,AA,BB,AND NN.
- SOCKET CONTACT ASSEMBLY BODY-MATERIAL: BRASS PER MIL-C-50 FINISH: 0.76um [.000030] MIN GOLD PER MIL-G-45204 FOR A LENGTH OF 5.08 [.200] MIN FROM MATING END, 2.54um [.000100] MIN TIN PER MIL-T-10727 FOR A LENGTH OF 6.35 [.250] MIN FROM OPPOSITE END, BOTH OVER 1.27um [.000050] MIN NICKEL PER QQ-N-290. SPRING-MATERIAL: STAINLESS STEEL PER QQ-S-766. POST-MATERIAL: BRASS PER ASTM-B-134 FINISH: 2.54um [.000100] MIN TIN PER MIL-T-10727 OVER 1.27um [.000050] MIN NICKEL PER QQ-N-290.

5 OBSOLETE PARTS: OBSOLETE CIS STREAMLINING PER D.RENAUD/D.SINIS

REV	DESCRIPTION	DATE	DWN	APVD
5	OBSOLETE			
4	NUTS AND LOCKWASHERS			
3	1-213809-0			
5	OBSOLETE			
4	SPACERS			
3	213809-9			
5	OBSOLETE			
4	SPACERS			
2	213809-8			
4	SPACERS			
7	213809-7			
5	OBSOLETE			
4	NUTS AND LOCKWASHERS			
3	213809-4			
5	OBSOLETE			
4	SPACERS			
3	213809-3			
5	OBSOLETE			
4	SPACERS			
2	213809-2			
4	SPACERS			
1	213809-1			

RECOMMENDED PC BOARD LAYOUT
SCALE 4:1

THIS DRAWING IS A CONTROLLED DOCUMENT.		D.BROCKWAY 08-16-94		Tyco Electronics Corporation	
DIMENSIONS: mm [INCHES]		R.STONE 08-25-94		Harrisburg, Pa 17105-3608	
TOLERANCES UNLESS OTHERWISE SPECIFIED:		NAME		PRODUCT SPEC	
0 PLC ± -		APVD		APPLICATION SPEC	
1 PLC ± -		SIZE		CAGE CODE	
2 PLC ± 0.13 [.005]		DRAWING NO		RESTRICTED TO	
3 PLC ± -		A1 00779		C=213809	
4 PLC ± -		WEIGHT		CUSTOMER DRAWING	
ANGLES ± -		SCALE 2:1		SHEET 1 OF 1	
MATERIAL SEE CALLOUTS		FINISH SEE CALLOUTS		REV F1	