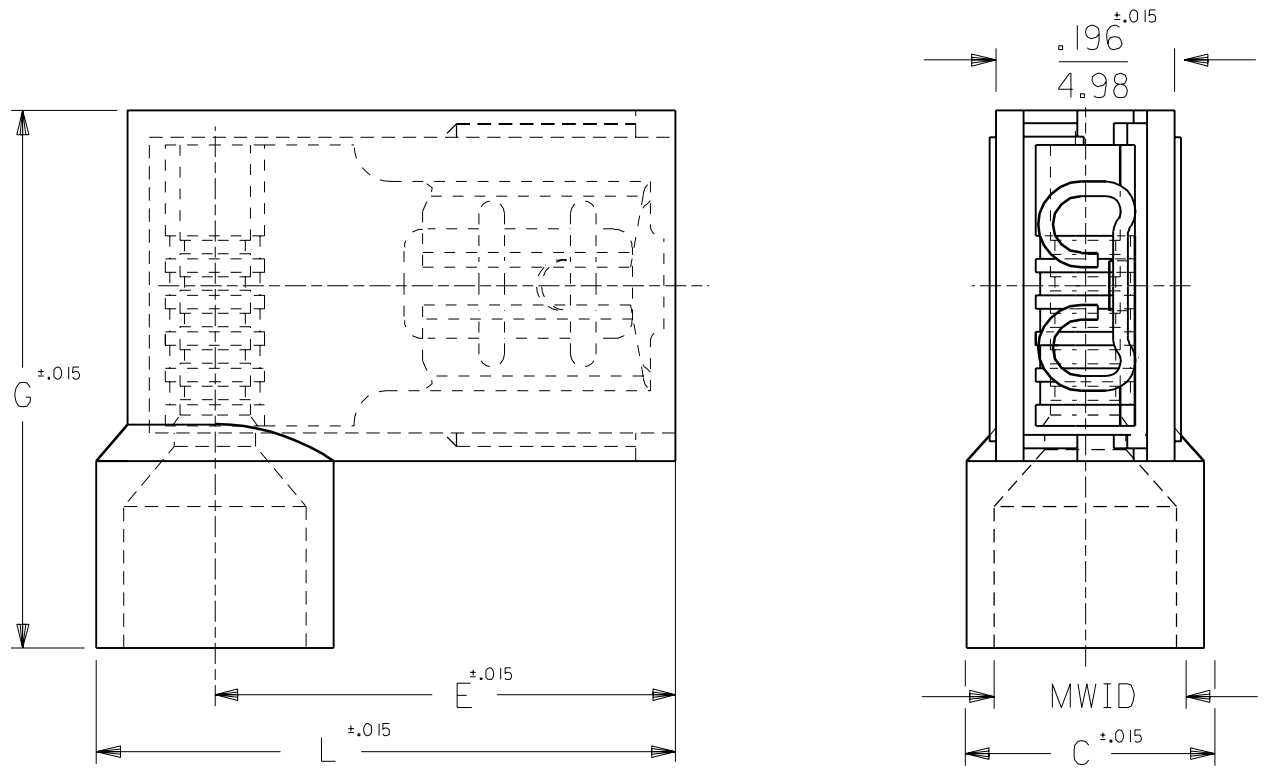


DRWG. NO. CUST. DRWG.



PART NO.	AWG	COLOR	MWID	TAB SIZE	L	G	E	C
AA-2222	22-18	RED	.176/4.47	.187x.020	.630/16.00	.585/14.86	.512/13.00	.236/5.99
AA-2222-X	22-18	RED	.240/6.10	.187x.020	.662/16.81	.625/15.88	.512/13.00	.300/7.62
AA-2223	22-18	RED	.176/4.47	.187x.032	.630/16.00	.585/14.86	.512/13.00	.236/5.99
AA-2223-X	22-18	RED	.240/6.10	.187x.032	.662/16.81	.625/15.88	.512/13.00	.300/7.62
BB-2224	16-14	BLUE	.200/5.08	.187x.020	.630/16.00	.585/14.86	.500/12.70	.260/6.60
BB-2224-X	16-14	BLUE	.265/6.73	.187x.020	.670/17.02	.625/15.88	.500/12.70	.325/8.26
BB-2225	16-14	BLUE	.200/5.08	.187x.032	.630/16.00	.585/14.86	.500/12.70	.260/6.60
BB-2225-X	16-14	BLUE	.265/6.73	.187x.032	.670/17.02	.625/15.88	.500/12.70	.325/8.26

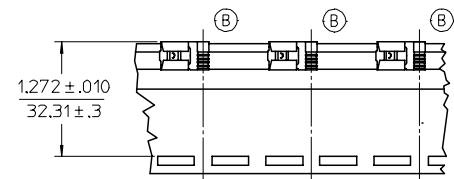
A	TWO METRIC DIM. WERE 15.75 NOW 16.00 06/05/92 RCM
LTR.	REVISIONS

NOTES:
 1. MWID = MAX. WIRE INSULATION DIA.
 2. ALL DIMENSIONS = INCHES/MM

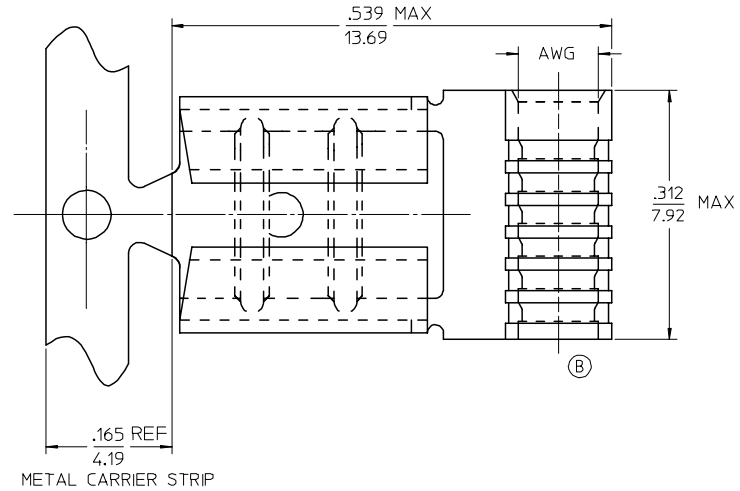
DIMENSIONS SHOWN (METRIC) INCH	
UNLESS OTHERWISE SPECIFIED TOLERANCES: ANGULAR ± 1/2°	
	INCH METRIC
3 PLACE	± .005 ± ---
2 PLACE	± .01 ± 0.13
1 PLACE	± --- ± 0.25
DRAFT WHERE APPLICABLE MUST REMAIN WITHIN DIMENSIONS	
DRWG. BY RM	CHK'D. BY JM
APP'D. BY FP	SCALE 5: 1

REVISE ONLY ON CAD SYSTEM	
TITLE FLAG FULLY INSULATED .187x.020, & .032 TAB	
molex ETC INC. PINELLAS PARK, FLA. 33781 U.S.A.	SHEET NO. DATE 07/26/89
PART NO.	DRWG. NO. CUST. DRWG.
FILE NAME CDFLG187	THIS DRAWING CONTAINS INFORMATION THAT IS PROPRIETARY TO MOLEX-ETC INC. AND SHOULD NOT BE USED WITHOUT WRITTEN PERMISSION.
DIV.	SIZE A

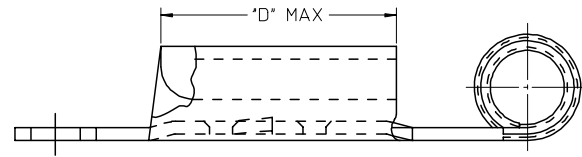
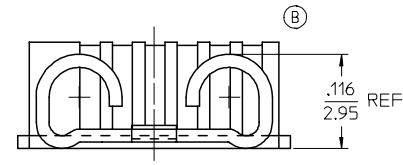
	13	12	11	10	9	8	7	6	5	4	3	2	1
J	MATERIAL NUMBER ON STRIP	ENGINEERING NUMBER ON STRIP	MATERIAL NUMBER LOOSE PIECE	ENGINEERING NUMBER LOOSE PIECE	TAPE MATERIAL NUMBER	TAPE ENGINEERING NUMBER	AWG	TAB SIZE	D MAX				
	190080008	AAZ-1147	190080001	AA-1147	190080004	AA-1147T	22-18	.187 X .020	.257/6.53				
	190080009	AAZ-1147-032	190080002	AA-1147-032	190080003	AA-1147-032T	22-18	.187 X .032	.257/6.53				
	190080013	AAZ-1158	190080006	AA-1158	190080007	AA-1158T	22-18	.250 X .032	.312/7.92	(B)			
	190080028	BBZ-1148	190080019	BB-1148	190080022	BB-1148T	16-14	.187 X .020	.257/6.53				
	190080029	BBZ-1148-032	190080020	BB-1148-032	190080021	BB-1148-032T	16-14	.187 X .032	.257/6.53				
I	190080031	BBZ-1159	190080024	BB-1159	190080027	BB-1159T	16-14	.250 X .032	.312/7.92	(B)			



PARTS ON TAPE



METAL CARRIER STRIP



SALES DRAWING

NOTES:

1. MATERIAL: BRASS .016/0.04 THICK. PLATING ELECTRO-TIN.
2. TAB SIZE SEE CHART.
3. WIRE AWG SEE CHART.
- (B) 4. PART IS ROHS COMPLIANT.

REVISED BARREL & CHART FC NO: ETC2007-0001 DRAWN BY: DRW:NEHLE CHKD: JMACNEIL APPR: RDEROSS	DESCRIPTION 2006/07/13 2006/07/17 2006/07/17	QUALITY SYMBOLS =0 =0	GENERAL TOLERANCES (UNLESS SPECIFIED)		DIMENSION STYLE IN/MM		SCALE NONE	DESIGN UNITS INCH	THIRD ANGLE PROJECTION		
			mm	INCH	DRAWN BY BENDERLE	DATE 2005/01/25	TITLE FLAG QD				
			4 PLACES ± .005	± .005	CHECKED BY R DEROSS	DATE 2005/01/25	22-18 AWG & 16-14 AWG				
			3 PLACES ± .005	± .01	APPROVED BY R DEROSS	DATE 2005/01/25	.187X.020&.032,.250X.032				
			2 PLACES ± .13	± .01	MATERIAL NO. SEE CHART		MOLEX INCORPORATED		DOCUMENT NO. SD-19008-013		
			1 PLACE ± .25	± .01	SIZE C		SHEET NO. 1 OF 1		THIS DRAWING CONTAINS INFORMATION THAT IS PROPRIETARY TO MOLEX INCORPORATED AND SHOULD NOT BE USED WITHOUT WRITTEN PERMISSION		
			ANGULAR ±1/2°		DRAFT WHERE APPLICABLE MUST REMAIN WITHIN DIMENSIONS						