

Quick Start Guide

Zlinx™ Radio Modem

ZPxxD-xxxRM-SR(MR)(LR-AU)



2

Install Zlinx™ Manager Software

- Insert the CD into your CD ROM Drive. The Zlinx™ Manager Install Wizard should start. Follow the on-screen instructions to install the software.
- If auto run is disabled, locate the Zlinx Manager file on the CD and double click it. The Install Wizard should start. Follow the on-screen instructions.

3

Connect Power Supply

- A 10 to 48 VDC or 18 to 30 VAC external power supply is required.
- Connect the power supply to the power terminal block located on the top of the radio modem.

4

Connect Serial Cable & Antenna

- Connect a straight through RS-232 cable between the Radio Modem and your PC.
- Connect the antenna to the Radio Modem.

5

Start the Zlinx™ Manager Software

- Start the Zlinx™ Manager Software.
- Click the Radio Modem Button.
- Click the Radio Modem Configuration Button.
 - Select your COM port and configure it for 9600 baud, Data Bits: 8, Parity: None, Stop Bit: 1.
- Click the Connect Button.
- When the software locates the Radio Modem, the Basic Modem Settings Screen will be displayed. This screen will display the Model Number, Function Set Type, Firmware Version, Network Identifier, Destination Address, Baud Rate, and Parity.
- If the settings were changed from the default, Auto Modem Search can be used to locate the modem. The Auto Search will use a sequence of COM Ports and settings until a response is received. If there is still no response, double check the power supply and serial cable. Also, make sure that no other devices are attached and that the unit is not set to RS-422/485 2-wire.

1

Check for All Required Hardware

- ZLINX™ Radio Modem (one of the following models)
 - ZP24D-250RM-SR
 - ZP24D192RM-MR
 - ZP24D-96RM-MR
 - ZP9D-192RM-MR
 - ZP9D-96RM-MR
 - ZP9D-115RM-LR-AU
- This Quick Start Guide
- CD with ZLINX™ Manager Software and manual
- Antenna
- Terminal Block (Attached)
- Additional items required but not included:
 - 10 – 48 VDC / 18 – 30 VAC, 6.0 W Power Supply
 - Serial Cable

Special Precautions for UL

Maximum Ambient Air Temperature: 85°C (185°F)

Wiring Terminals:

Copper Wire Only

One Conductor per Terminal

Wire Range 28 to 16 AWG

Tightening Torque 1.7 lb-in

Temperature Rating of Field Wiring – 105° C (221° F)
sized for 60° C (140°F) ampacity.



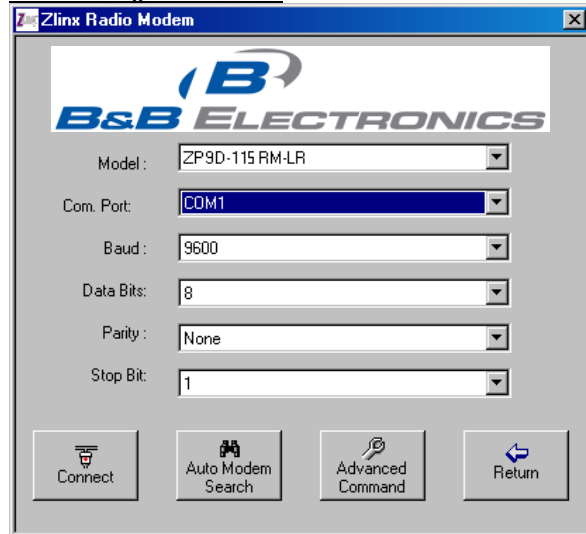
Zlinx™ Manager Start Screen



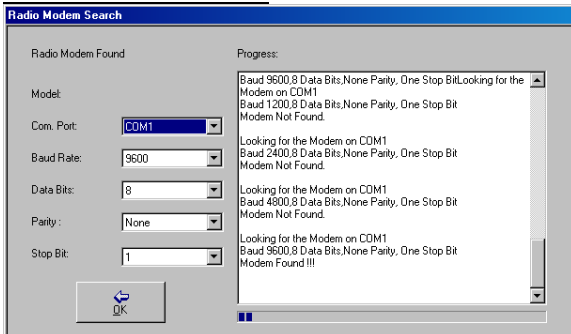
Radio Modem Options Screen



On-line Configuration Screen



Radio Modem Found Screen



Radio Modem Not Found Screen

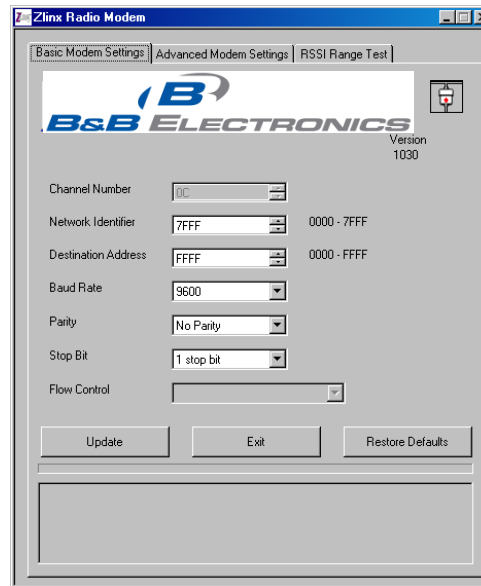


6

Setup the Radio Modem

- ❑ Select a unique Network Identifier. This is especially important if you have other units operating in the same area.
- ❑ Set the Destination Address to FFFF (broadcast).
- ❑ If desired, you can change the baud rate and parity on the Basic Modem Settings Screen. Remember to change your COM port to match.
- ❑ Click the Update Button to store the settings.
- ❑ Click the Advanced Modem Settings TAB. Check the Power Level (PL). Select the appropriate power level for your application. For bench testing, PL should be set to 0 and Radio Modems should be separated by at least 1 meter. When using higher power levels, separate the modems by at least 7 meters. PL is adjustable on SR and LR modems.
- ❑ If you changed any settings, store them by clicking the Update button.

Basic Modem Settings Screen



7

Set up your second Radio Modem

- ❑ Exit Configuration. Power off the Radio Modem (wait at least 30 seconds before re-applying power to this Radio Modem).
- ❑ Configure your second Radio Modem using the same procedure. Do not proceed to the RSSI Range Test step until you have a second modem configured. Two properly configured units are required to proceed to the next step.
- ❑ Configure the second unit with the same settings.

8

RSSI Range Test

- ❑ Set one the remote modem to Loopback Mode. Loopback connections can be made using the RS-422/485 interface by setting switch 1 and 2 to ON and 3 and 4 to OFF (internal loopback with echo on). You can also use the DB9 connections by bridging pins 2 and 3.
- ❑ On the Radio Modem that is NOT set up for Loopback Mode, run the RSSI Range Test. Observe the following indications:
 - The DATA and RSSI will flash as data is sent between the two units.
 - Test results will be displayed on the RSSI Range Test Screen.

9

Configure to Match Your Serial Devices

- ❑ Configure the Radio Modems to match the serial devices you will be connecting to.
- ❑ The DB9 is wired as a DCE device. If you are connecting to another DCE device, a cross-over cable will be required.
- ❑ For the RS-422/485 terminals, TD is output, RD is input. Ensure you match the signal polarity.
 - 2-Wire Mode: TDA(-), TDB(+), SW1 & 2 ON.
 - Wiring Examples are located in the manual.
- ❑ You are now ready to install your Radio Modems in the field.