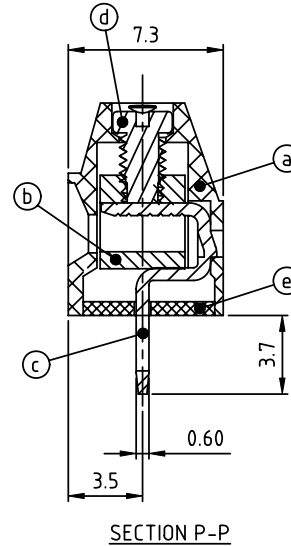
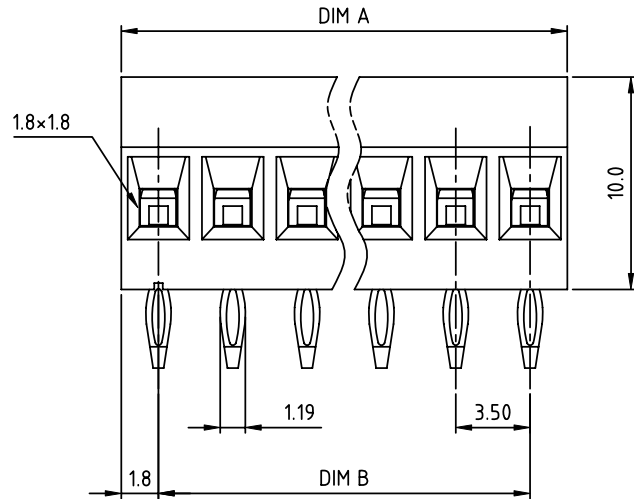
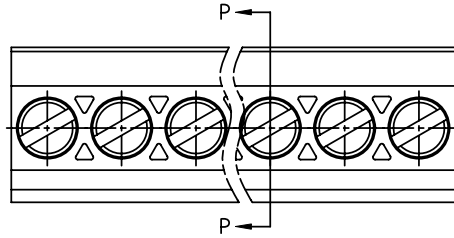
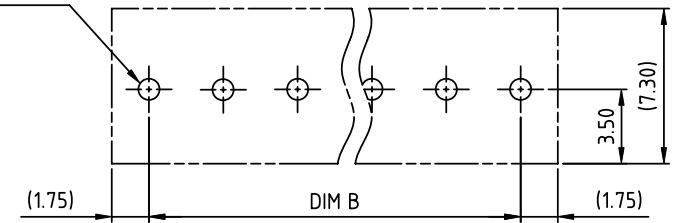


PRODUCT NUMBER	PITCH
VQxx11x100J0G	3.50 mm



Diameter of metal-plated hole: $\phi 1.0 \pm 0.05$



RECOMMENDED P.C.B LAYOUT
TOP VIEW

Material:

- Item① Terminal housing :Thermoplastic (UL 94V-0)
- Item② Clamp : Brass, Ni plated
- Item③ solder pin : Brass, Tin plated
- Item④ Terminal screw: Steel Zinc plating"-slot type
- Item⑤ Terminal cover:Thermoplastic (UL 94V-0)

Electrical: cULus

- Voltage rating: 300V
- Current rating: 10A
- Wire range:
- Solid wire(AWG): 16-30
- Stranded wire(AWG): 16-30
- Torque: 1.7 Lb-In
- Diameter of metal - plated hole : $\phi 1.0$
- Screw: M2
- Wire strip length: 5-6mm
- Withstanding Voltage: 1.6 KV
- Operating temperature: -40°C to $+115^{\circ}\text{C}$
- Soldering temperature: $260^{\circ}\text{C} \pm 5^{\circ}\text{C} / 5 \text{ Sec}$
- Safety Approval:

N= Number of poles

DIM A	$N \times 3.5$
DIM B	$(N-1) \times 3.5$

Poles	Tolerance
2p-6p	± 0.15
7p-12p	± 0.25
13p-19p	± 0.35
20p-24p	± 0.40

PART NO.: VQ xx 1 1 x 1 00J0 G

	Color	RoHS compliant (lead<4%) In copper Alloy
Solid Block	0 Black (RAL9005)	
No. of poles	2 Red (RAL3001/D)	
02 2 poles	3 Orange(RAL2011/P)	
03 3 poles	4 Yellow(RAL1018/A)	
...	5 Green(RAL6018/T)	
24 24 poles	6 Blue (RAL5015/A)	
	8 Grey(RAL7035/D)	
	9 White(RAL1102)	
	C Green(RAL6018/U)	

mat'l. code	surface ASME Y14.5	tolerance ASME Y14.5	projection	product family
ltr	ecn	no	dr	date
tolerances unless otherwise specified				TERMINAL BLOCK
angles	ϕ	$X \pm 0.5$	MM	title
$X \pm 1^{\circ}$	ϕ	$X.X \pm 0.3$	scale	TERMINAL BLOCK
		$X.XX \pm 0.1$		RISING CLAMP, 180D WIRE INLET, PRESS FIT
dr	EVIN ZHONG	040714		dwg no
enr	EVIN ZHONG	040714		sheet 1 of 1
chr	HANKE FENG	040714		size
appd	SHI JUN	040714		A4
sheet index	revision sheet	A		type
		1		CUSTOMER Drawing