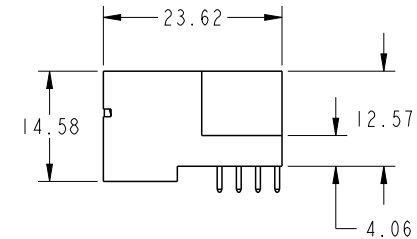
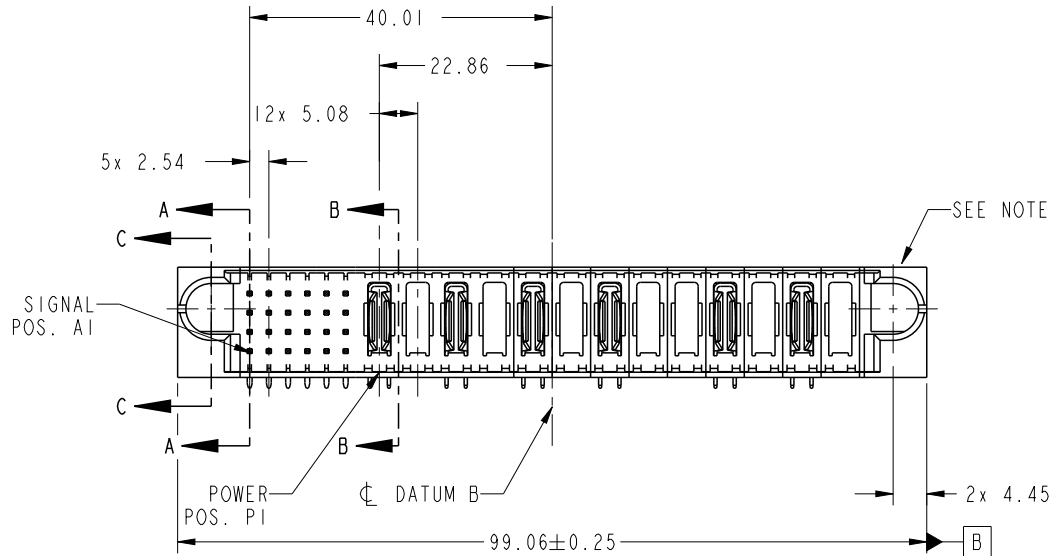


PRODUCT NO.	ROWS	SIGNAL						POWER													E2	
		E1	1	2	3	4	5	6	P1	P2	P3	P4	P5	P6	P7	P8	P9	P10	P11	P12		P13
51939-753-- NOTE 3	D C B A	U T S R	U T S R	U T S R	U T S R	U T S R	U T S R	PA	X	PA	X	PA	X	PA	X	PA	X	X	PA	X	PA	X

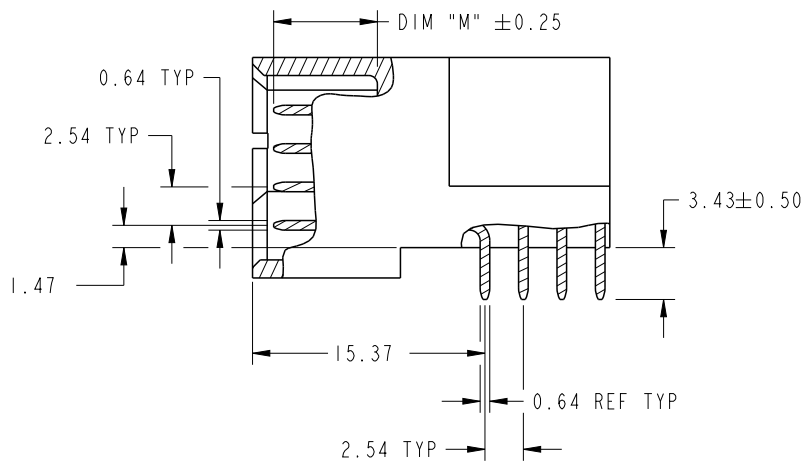


CODE	DIM "M" MATING LENGTH	CONTACT TYPE
U	[6.86]	SIGNAL
T	[6.86]	SIGNAL
S	[6.86]	SIGNAL
R	[6.86]	SIGNAL
F	[5.59]	SIGNAL
PA	[N/A]	POWER
X	OMITTED	OMITTED

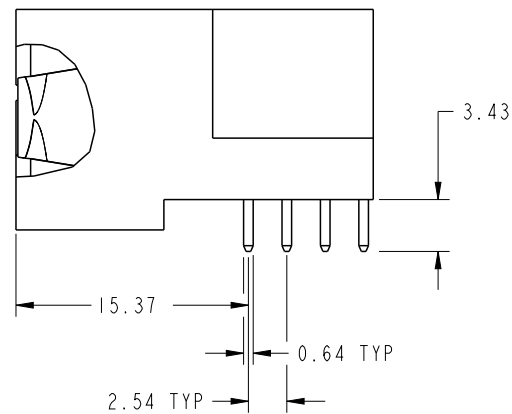
spec ref	*	dr	Luo Weller	2013/04/09	projection	MM	size	A4	scale	1:1	
tolerance std	TOLERANCES UNLESS OTHERWISE SPECIFIED	eng	Luo Weller	2013/04/16		←→	ecn no	-	rel level	Released	
SEE NOTE		chr	-	-							
surface	linear	appr	Pei-Ming Zheng	2013/04/16	product family	PwrBlade					
	angular	www.fci.com		title	24S + 13DCP RIGHT ANGLE SOLDER HEADER		dwg no	51939-753		rev	A
	0.X ±0.5			cat. no.	-		Product - Customer Drw		sheet 1 of 4		
	0.XX ±0.25										
	0.XXX ±0.1										
	0° ±2°										

PRODUCT NUMBER

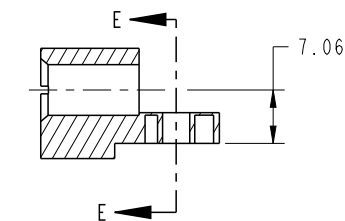
51939-753--
NOTE: 3



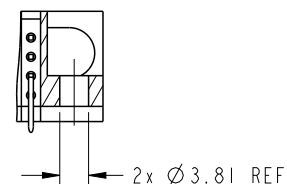
BROKEN-OUT SECTION A-A
SCALE 2:1



BROKEN-OUT SECTION B-B
SCALE 2:1



SECTION C-C



PARTIAL SECTION E-E

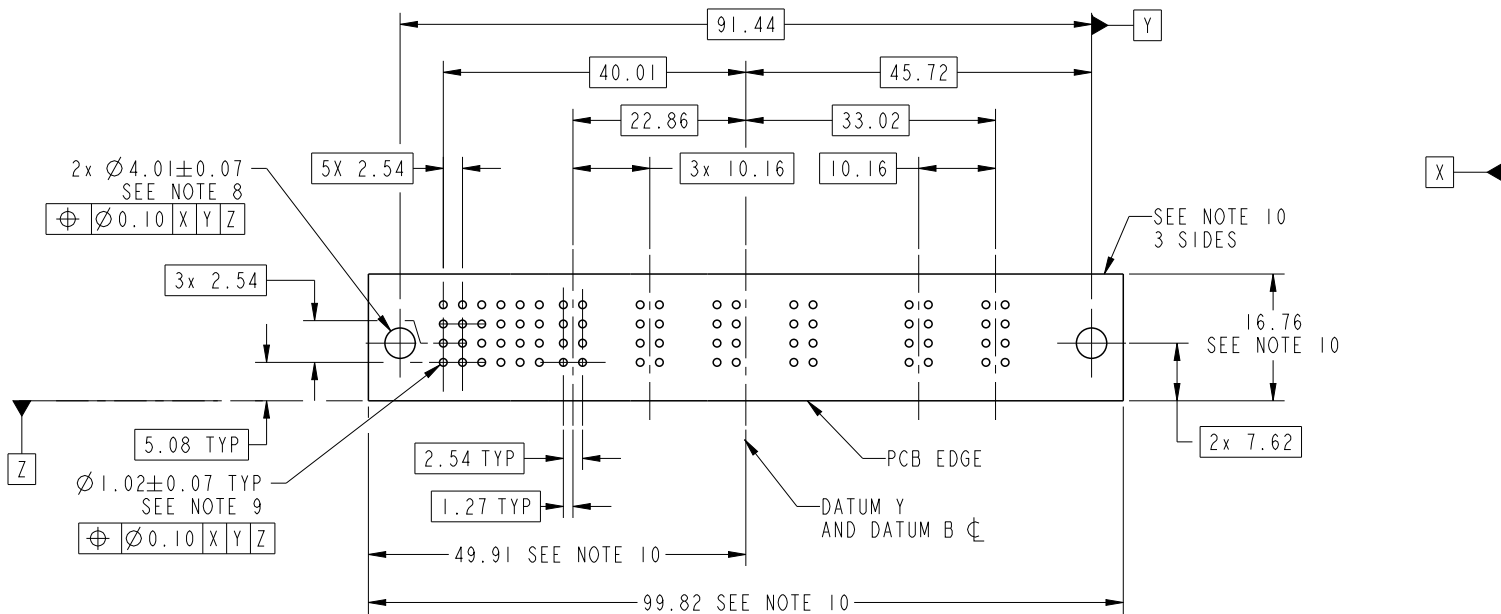


Copyright FCI.

dr	Luo Weller	2013/04/09	projection 	MM 	size	A4	scale	1:1
eng	Luo Weller	2013/04/16			ecn no	-		
chr	-	-			rel level	Released		
appr	Pei-Ming Zheng	2013/04/16	product family	PwrBlade				
	title	24S + 13DCP RIGHT ANGLE SOLDER HEADER		dwg no	51939-753		rev	A
www.fci.com	cat. no.	-	Product - Customer Drw			sheet 2 of 4		

PRODUCT NUMBER

51939-753__
NOTE: 3



RECOMMENDED PCB LAYOUT

dr	Luo Weller	2013/04/09	projection 	MM 	size	A4	scale	1:1
eng	Luo Weller	2013/04/16			ecn no	-		
chr	-	-			rel level	Released		
appr	Pei-Ming Zheng	2013/04/16	product family	PwrBlade				
	title	24S + 13DCP RIGHT ANGLE SOLDER HEADER		dwg no	51939-753		rev	A
www.fci.com	cat. no.	-	Product - Customer Drw		sheet 3 of 4			

PRODUCT NUMBER
51939-753__
NOTE: 3

NOTES:

1. DIMENSIONS AND TOLERANCES ARE IN ACCORDANCE WITH ASME Y14.5M, 1994 UNLESS OTHERWISE SPECIFIED.

CONNECTOR NOTES:

- 2. HOUSING MATERIAL: UL 94 V-0 GLASS FILLED HIGH-TEMP THERMOPLASTIC
POWER CONTACT MATERIAL: COPPER ALLOY
SIGNAL PIN MATERIAL: COPPER ALLOY
- 3. SEE ITEM 1 & 2 IN PRINT 10064183 FOR PLATING SPEC OF 51939-753 AND 51939-753LF RESPECTIVELY.
- 4. MANUFACTURER'S NAME, DATE CODE AND OPTIONAL P/N TO APPEAR ON THIS SURFACE. THE MARK CAN BE OMITTED IF THERE IS NOT ENOUGH SPACE ON THIS SURFACE.
- 5. PRODUCT SPECIFICATION GS-12-149.
APPLICATION SPECIFICATION BUS-20-067.
- 6. PACKAGED IN TRAYS.

PCB NOTES:

- 7. ALL HOLE DIAMETERS ARE FINISHED HOLE SIZE.
- 8. MOUNTING HOLES, WHERE APPLICABLE, ARE UNPLATED.
- 9. $\varnothing 1.151 \pm 0.025$ DRILLED HOLES PLATED WITH 0.008 MIN SnPb OR Sn OVER 0.03 TO 0.08 Cu PLATING TO ACHIEVE $\varnothing 1.02 \pm 0.07$ HOLE.
- 10. CONNECTOR KEEP-OUT ZONE.



Copyright FCI.

dr	Luo Weller	2013/04/09	projection 	MM 	size	A4	scale	1:1	
eng	Luo Weller	2013/04/16			ecn no	-			
chr	-	-			rel level	Released			
appr	Pei-Ming Zheng	2013/04/16	product family	PwrBlade					
		title	24S + 13DCP RIGHT ANGLE SOLDER HEADER		dwg no	51939-753		rev	A
www.fci.com		cat. no.	-		Product - Customer Drw			sheet 4 of 4	