

NS5S1153MUGEVB

DPDT USB 2.0 High Speed / Audio Switch with Negative Swing Capability Evaluation Board User's Manual



ON Semiconductor®

<http://onsemi.com>

EVAL BOARD USER'S MANUAL

Overview

The NS5S1153 is a DPDT switch for combined true-ground audio and USB 2.0 high speed data applications. It allows portable systems to use a single port to pass either USB data or audio signals from an external headset; headset; the two channels being compliant to USB 2.0, USB 1.1 and USB 1.0.

The switch is capable of passing signals with negative voltages as low as 2 V below ground. The device features

shunt resistors on the audio ports. These resistors are switched in when the audio channel is off and provide a safe path to ground for any charge that may build up on the audio lines. This reduces Pop & Click noise in the audio system. The NS5S1153 is also equipped with VBUS detection circuitry to immediately switch to USB mode in the event that a voltage is detected on VBUS.

The NS5S1153 is housed in a space saving, ultra low profile 1.4 x 1.8 x 0.5 mm 10 pin μ QFN package.

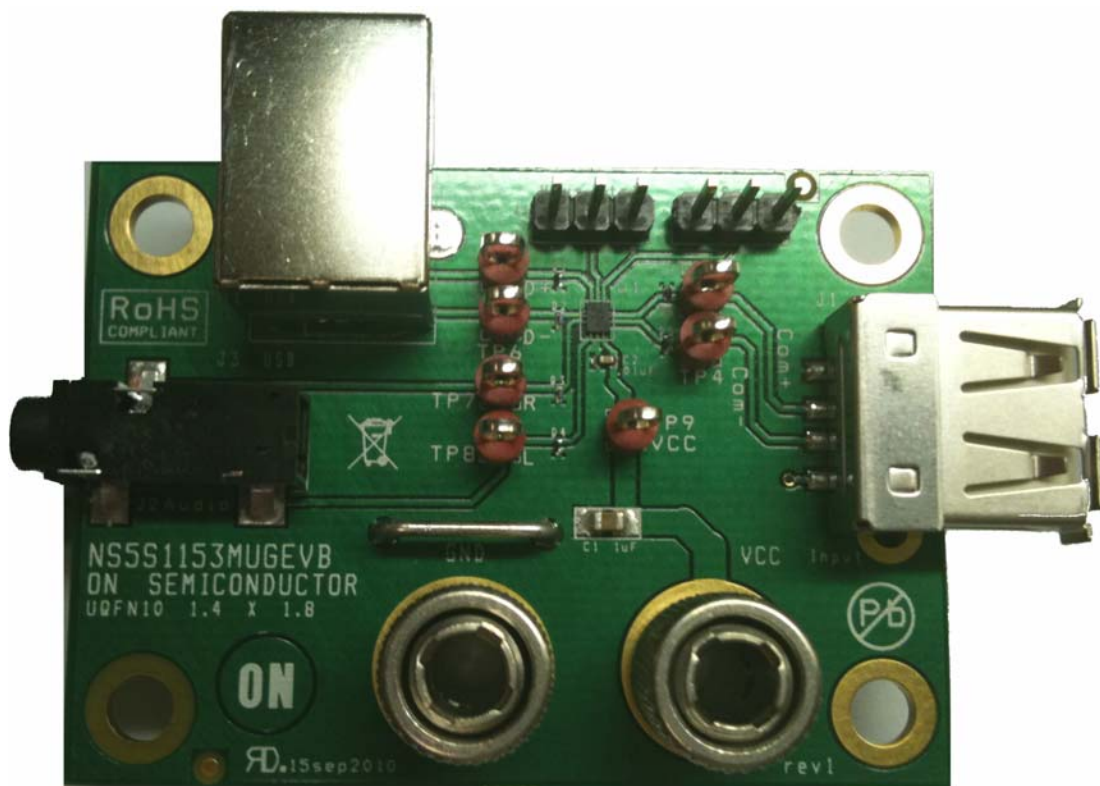


Figure 1. Board Picture

NS5S1153MUGEVB

NS5S1153 – BOARD SCHEMATIC

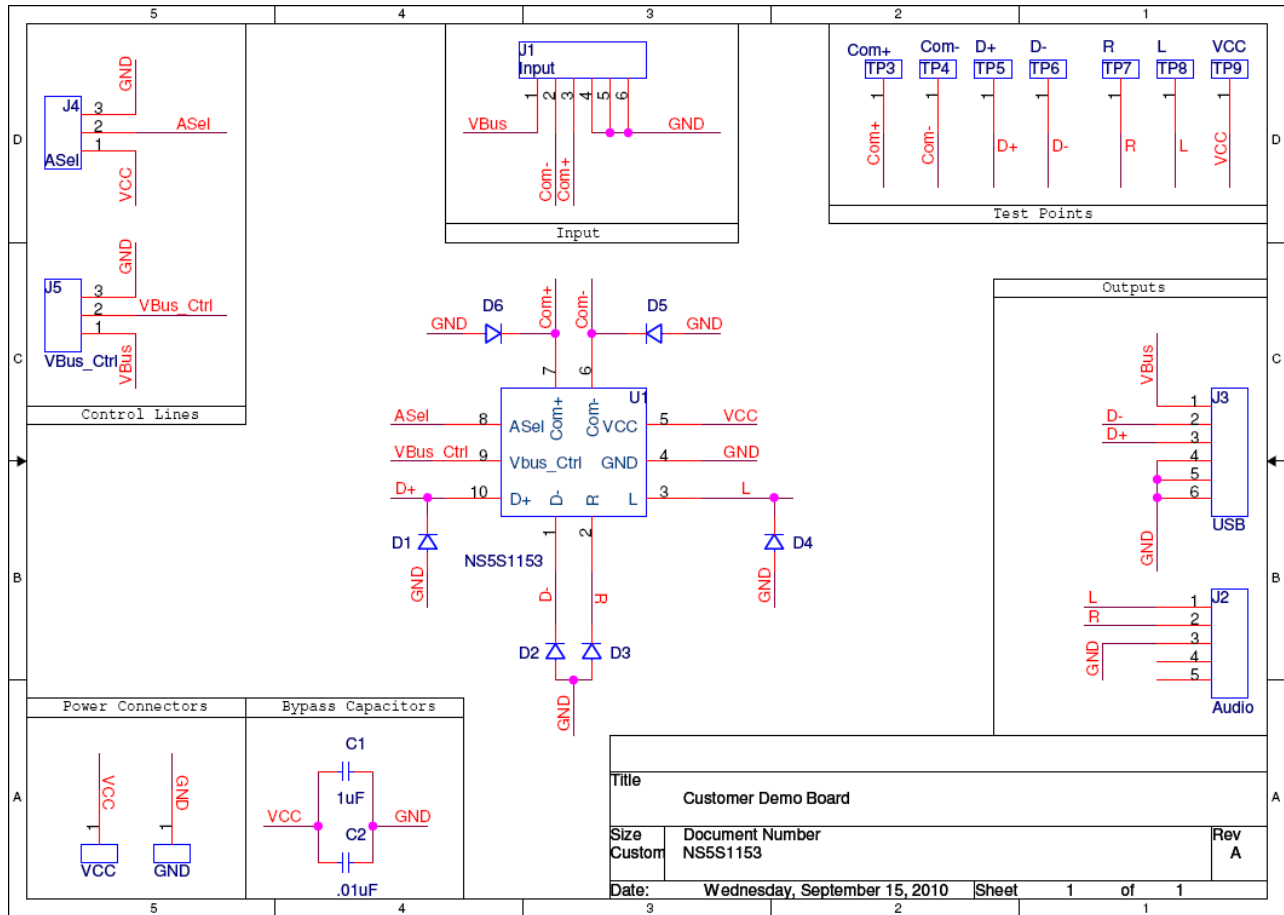


Figure 2. Board Schematic

Table 1. NS5S1153 – BOARD CONNECTIONS

Symbol	Description
SUPPLY	
VCC, GND	This is the positive and the return connection for power supply.
SETUP	
J4 – ASEL	This is the line selection header.
J5 – VBUS_CTRL	This is VBUS comparator input.
SIGNALS	
J1 – INPUT	This USB connector Male A type is the common data and audio lines.
J2 – AUDIO	This connector is a 3.5 mm Stereo Jack Connector.
J3 – USB	This USB connector Male B type is the high speed USB signaling path.

NS5S1153MUGEVB

NS5S1153 – TEST PROCEDURE

Equipment needed

- Power Supply
- Digital Ohm Meter
- Desktop or Laptop with Windows XP or higher
- USB Memory Stick
- USB Type A to USB Type B

Table 2. BACKGROUND: ASEL AND VBUS TRUTH TABLE

ASEL	V _{BUS}	L, R	D+, D-	L, R Shunt
Low	Low	ON	OFF	OFF
Low	High	OFF	ON	ON
High	X	ON	OFF	OFF

Test

1. Connect ASEL to '0' (J4) and VBUS_CTRL to '1' (J5).
2. Connect the power supply at 3.6 V from VCC to GND. The supply current should be around 20 μ A. The impedance measured from COM+ (TP3) to D+ (TP5) is over 10 M Ω . The impedance measured from COM- (TP4) to D- (TP6) is over 10 M Ω . The impedance measured from COM+ (TP3) to R (TP7) is close to 3 Ω . The impedance measured from COM- (TP4) to L (TP8) is close to 3 Ω .
3. Insert a USB cable from USB terminal (J3) to the laptop or desktop. The impedance measured from L (TP8) and R (TP7) to GND is closed to 118 Ω .
4. Place a USB Memory Stick connected to USB terminal (J1). The device is being recognized.

NS5S1153MUGEVB

NS5S1153 – COMPONENTS SELECTION

Input Capacitor

A 0.1 μ F X5R ceramic capacitor or larger must bypass V_{CC} input to the ground. This capacitor should be placed as close as possible to this input.

ESD Diode

In order to protect the device against transient voltages, an external bi-directional ESD / IEC diode is recommended on COM+ and COM- pin. The ESD11N is designed to protect

voltage sensitive components that require ultra-low capacitance from ESD and transient voltage events. Excellent clamping capability, low capacitance, low leakage, and fast response time, make these parts ideal for ESD protection on designs where board space is at a premium. Because of its low capacitance, it is suited for use in high frequency designs such as USB 2.0 high speed and antenna line applications.

Table 3. NS5S1153 – BILL OF MATERIAL

Designator	Qty	Description	Value	Tolerance	Footprint	Manufacturer	Manufacturer Part Number
U1	1	NS5S1153	n/a	n/a	UQFN10	ON Semiconductor	NS5S1153
C1	1	Ceramic Capacitor SMD	1 μ F	10%	0805	Murata	GRM155R60J105
C2	1	Ceramic Capacitor SMD	0.01 μ F	10%	0402		
D1, D2, D3, D4, D5, D6	6	5V Bi-Directional TVS	n/a	n/a	DSN2	ON Semiconductor	ESD11N5
TP3, TP4, TP5, TP6, TP7, TP8, TP9	7	Test Point PC Multi Purpose	n/a	n/a	TP1	Keystone Electronics	5010
VCC, GND	2	Banana Connector	n/a	n/a	7 mm Hole	Johnson Components	111-2223-001
Vbus_Ctrl, Ase1	2	50pin Modular 2pin header	n/a	n/a	Header3	Tyco Electronics	5-826629-0
Input J1	1	USB TypeA Connector	n/a	n/a	USB TypeA	Mill-Max	896-43-004-00-000000
USB J3	1	USB TypeB Connector	n/a	n/a	USB TypeB	Adam Tech	USB-B-S-RA
Audio J2	1	Stereo Audio Jack Connector	n/a	n/a	PHONO_S J3523	CUI Inc	SJ-3523-SMT
GND Bar	1	PCB Shorting Link	n/a	n/a	GND_Strap	Harwin	D3082-46
PCB	1	55 x 40 mm 2 Layers	NA	NA	NA	Any	NS5S1153MUGEVB

NS5S1153 – PCB LAYOUT GUIDELINES

Electrical Layout Considerations

Implementing a high speed USD device requires paying attention on USB lines and traces to preserve signal integrity. The demonstration board serves as layout example and can support the design engineers to preserve high speed performances.

Electrical layout guidelines are:

- Bypass capacitor must as closed as possible to the V_{cc} input pin for noise immunity
- The characteristics impedance of each High Speed USB segment must be 45 Ω .

- All corresponding D+ / D- line segment pairs must be the same length.
- The use of vias to route these signals should be avoided.
- The use of turns or bends to route these signal should be avoided.
- The ground plane of the PCB will be used to determine the characteristics impedance of each line.

NS5S1153MUGEVB

NS5S1153 – EVALUATION BOARD PCB LAYOUT

Board Reference: NS5S1153MUGEVB

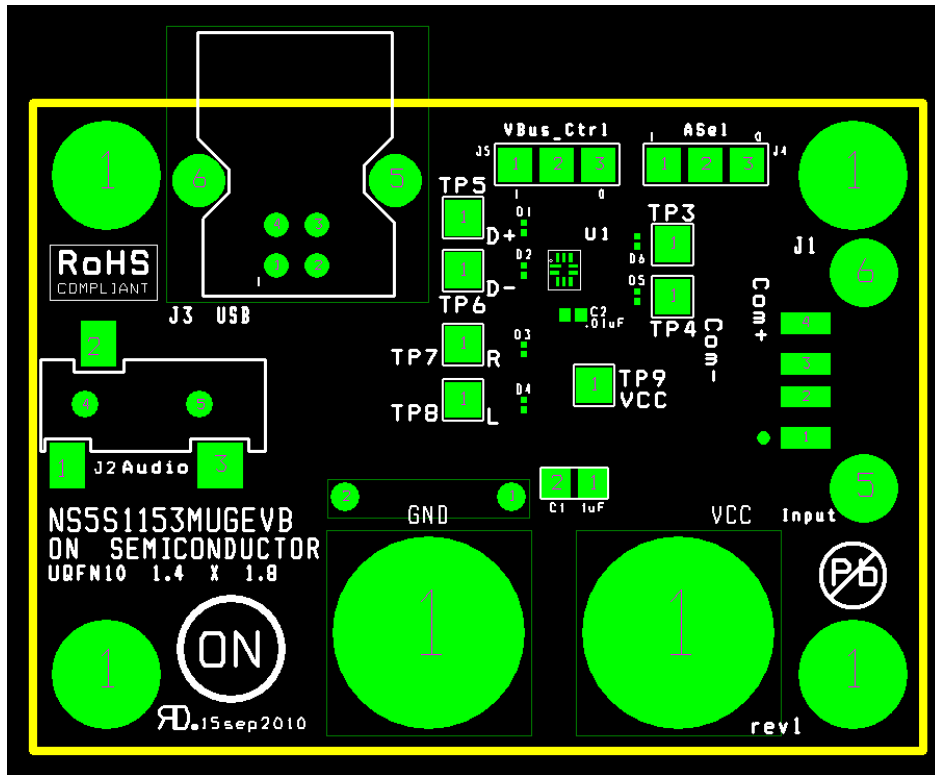


Figure 3. Assembly Layer

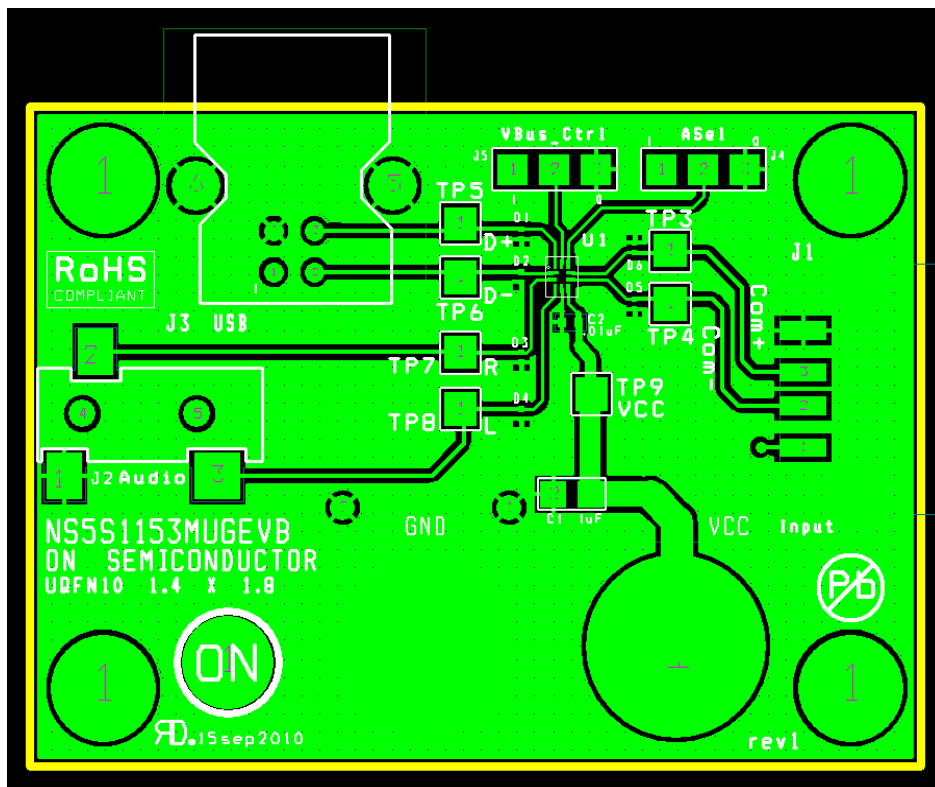


Figure 4. Top Layer Routing

NS5S1153MUGEVB

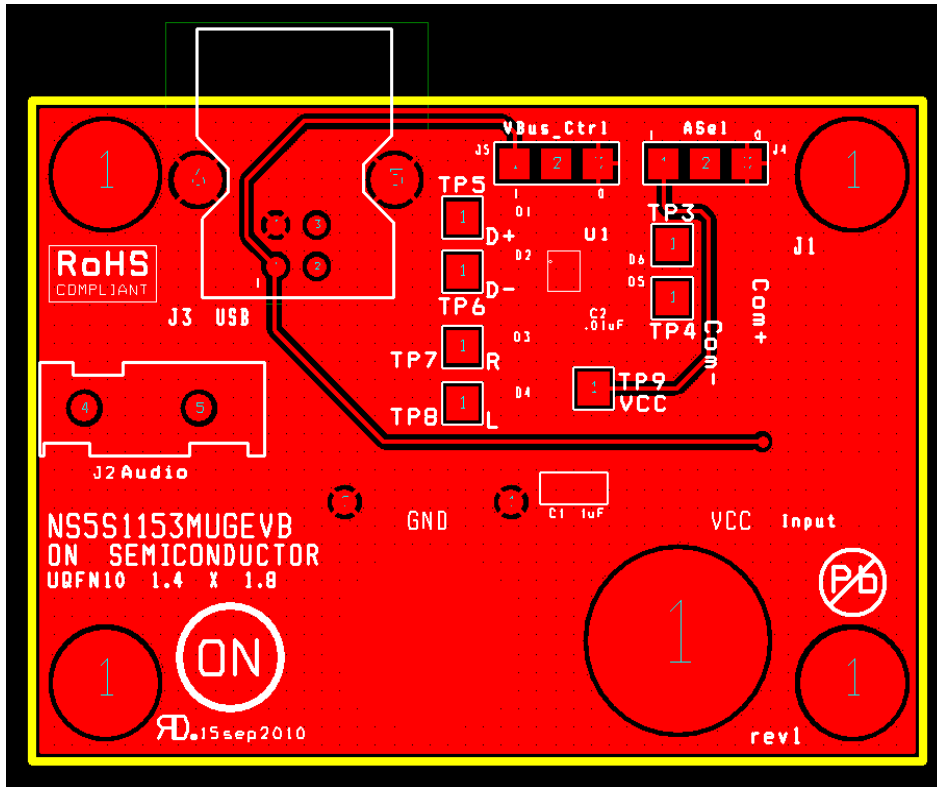


Figure 5. Bottom Layer Routing

ON Semiconductor and are registered trademarks of Semiconductor Components Industries, LLC (SCILLC). SCILLC owns the rights to a number of patents, trademarks, copyrights, trade secrets, and other intellectual property. A listing of SCILLC's product/patent coverage may be accessed at www.onsemi.com/site/pdf/Patent-Marking.pdf. SCILLC reserves the right to make changes without further notice to any products herein. SCILLC makes no warranty, representation or guarantee regarding the suitability of its products for any particular purpose, nor does SCILLC assume any liability arising out of the application or use of any product or circuit, and specifically disclaims any and all liability, including without limitation special, consequential or incidental damages. "Typical" parameters which may be provided in SCILLC data sheets and/or specifications can and do vary in different applications and actual performance may vary over time. All operating parameters, including "Typicals" must be validated for each customer application by customer's technical experts. SCILLC does not convey any license under its patent rights nor the rights of others. SCILLC products are not designed, intended, or authorized for use as components in systems intended for surgical implant into the body, or other applications intended to support or sustain life, or for any other application in which the failure of the SCILLC product could create a situation where personal injury or death may occur. Should Buyer purchase or use SCILLC products for any such unintended or unauthorized application, Buyer shall indemnify and hold SCILLC and its officers, employees, subsidiaries, affiliates, and distributors harmless against all claims, costs, damages, and expenses, and reasonable attorney fees arising out of, directly or indirectly, any claim of personal injury or death associated with such unintended or unauthorized use, even if such claim alleges that SCILLC was negligent regarding the design or manufacture of the part. SCILLC is an Equal Opportunity/Affirmative Action Employer. This literature is subject to all applicable copyright laws and is not for resale in any manner.

PUBLICATION ORDERING INFORMATION

LITERATURE FULFILLMENT:
 Literature Distribution Center for ON Semiconductor
 P.O. Box 5163, Denver, Colorado 80217 USA
Phone: 303-675-2175 or 800-344-3860 Toll Free USA/Canada
Fax: 303-675-2176 or 800-344-3867 Toll Free USA/Canada
Email: orderlit@onsemi.com

N. American Technical Support: 800-282-9855 Toll Free
 USA/Canada
Europe, Middle East and Africa Technical Support:
 Phone: 421 33 790 2910
Japan Customer Focus Center
 Phone: 81-3-5817-1050

ON Semiconductor Website: www.onsemi.com
Order Literature: <http://www.onsemi.com/orderlit>
 For additional information, please contact your local
 Sales Representative