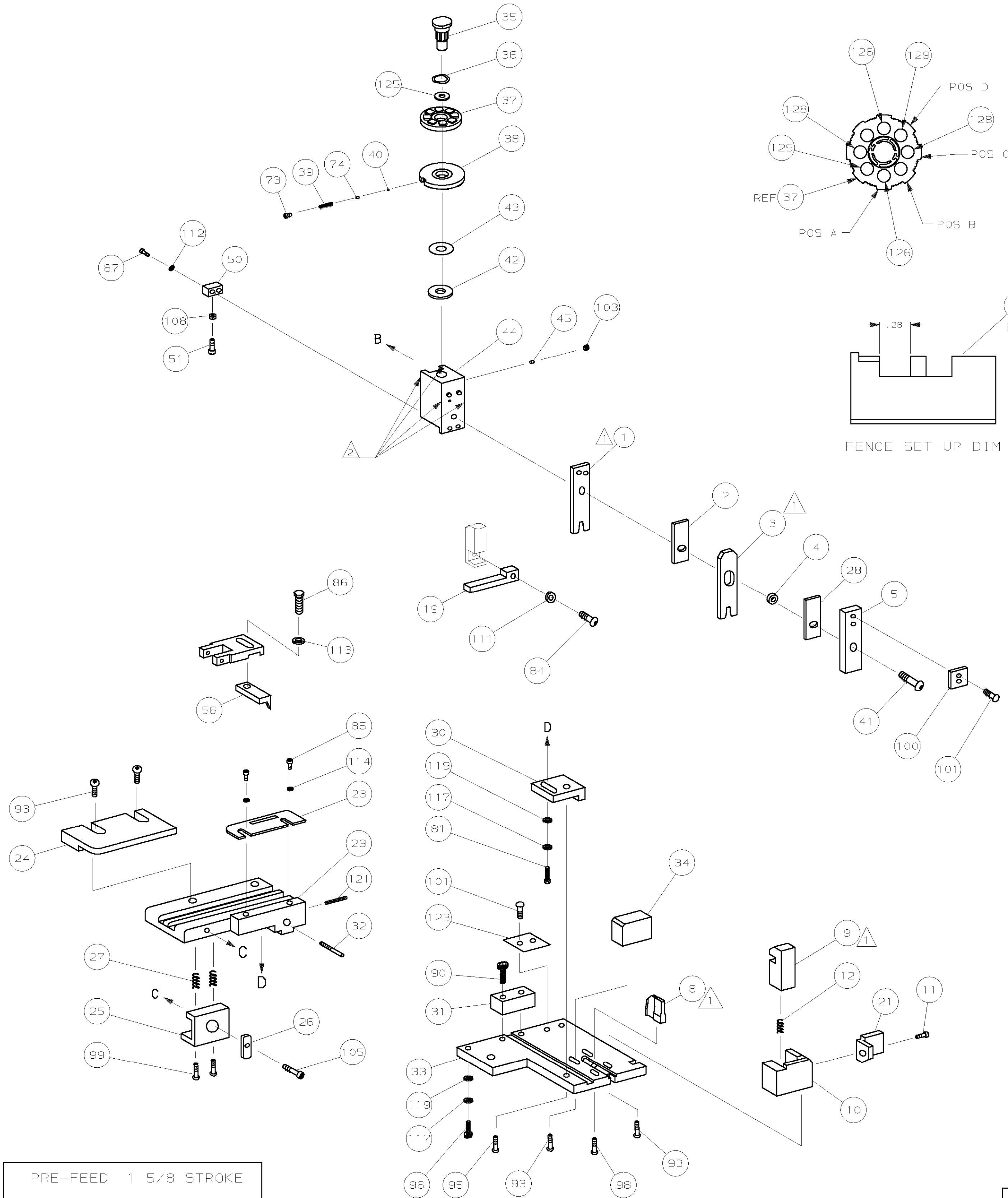


PART NUMBER	REV	FIRST USED
567910-1	C	854040-3

TERMINAL NAME:		CRIMPING DATA			
RECEPTACLE CST .100		CRIMP HEIGHT		WIRE SIZE	
	770601	A	.034 ±.002	22	
		B	.032 ±.002	24	
		C	.030 ±.002	26	
		D	NOT	USED	
		CRIMP	SIZE	TYPE	RANGE
		WIRE	.042	F	26-22
		INSUL	.070	F	.035-.050
		FEED	.360	APPL INST	SET UP GAGE
				NONE	L1380
TERM APPL SPEC 114-16019		WIRE STRIP LENGTH -			

SIM TO HOM 567373



QTY	REV	U/M	DWG SIZE	PART NO	DESCRIPTION	ITEM NO
2	-	C		6-354779-0	PIN, WIRE DISC (.3290) D	129
2	-	C		5-354779-8	PIN, WIRE DISC (.3280) C	128
						127
2	-	C		6-354779-4	PIN, WIRE DISC (.3310) A	126
1	-	A		986950-1	WASHER, FLAT PRECISION	125
						124
1	-	B		690701-2	PLATE, SERIAL NO.	123
						122
1	-	A		4-21028-0	PIN, SLT SPR (#10) S G ADJ BLK	121
						120
2	-	A		21899-2	WASHER, FLAT (#10) S G ADJ BLK	119
						118
2	-	A		21024-5	WASHER, LOCK (#10) ADJ BLOCK	117
						116
						115
2	-	A		21024-2	WASHER, LOCK (#4) FRONT STP GUIDE	114
REF	-	A		21024-4	WASHER, LOCK (#8) FEED FINGER	113
2	-	A		21024-4	WASHER, LOCK (#8) DEP-HOLD	112
REF	-	A		21024-4	WASHER, LOCK (#8) STRIPPER	111
						110
						109
1	-	A		21018-5	NUT, HEX (#6) HOLD DOWN	108
						107
						106
1	-	A		22353-8	SCR, SHLD (#.187x.25) DRAG LEVER	105
						104
1	-	A		21009-2	SCR, 5KT SET (1/4-20x.25 LW) RAM	103
						102
4	-	A		21017-2	SCR, DRIVE (#2x.19) ID PLATE	101
1	-	B		819347-1	PLATE, IDENTIFICATION	100
2	-	A		3-21002-0	SCR, BHC (10-32x.88) DRAG	99
1	-	A		22733-8	SCR, BHC (8-32x.38 LW) ANVIL	98
						97
1	-	A		3-21000-8	SCR, SHC (10-32x.88) MOUNTING	96
1	-	A		2-21002-7	SCR, BHC (10-32x.50) 5G ADJ BLK	95
						94
6	-	A		2-21002-1	SCR, BHC (8-32x.38) R STP GDE	93
						92
1	-	A		1-21002-7	SCR, SHC (6-32x.50) CAM	91
2	-	A		2-21000-7	SCR, SHC (8-32x.50) SCR BLK	90
						89
						88
2	-	A		2-21000-6	SCR, SHC (8-32x.38) DEP-HOLD DOWN	87
REF	-	A		2-22603-0	SCR, HEX HD (8-32x.31) FEED FINGER	86
2	-	A		1-21000-3	SCR, SHC (4-40x.25) F ST GUIDE	85
REF	-	A		22733-9	SCR, BHC (8-32x.50 SL) STRIPPER	84
						83
						82
1	-	A		3-22603-1	SCR, HEX (10-32x.38) 5G ADJ BL	81
						80
						79
						78
2	-	B		463310-7	BLADE, STRIPPING (#24)	77
						76
						75
1	-	A		690603-1	SPRING, ASSIST	74
1	-	A		23030-1	SCR, 5KT CAP (6-32x.25) CP DSC	73
						72
						71

QTY	REV	U/M	DWG SIZE	PART NO	DESCRIPTION	ITEM NO
						70
						69
						68
						67
						66
						65
						64
						63
						62
						61
						60
						59
						58
						57
REF	-	B		694433-8	PAWL, FEED	56
						55
						54
						53
						52
1	-	A		811242-2	BUMPER, HOLDDOWN	51
1	-	A		690753-1	SPACER, TONKER	50
						49
1	-	A		690602-6	CAM, PRE-FEED 1.62 STROKE	48
						47
						46
1	-	A		690191-1	PLUG, NYLON	45
1	-	C		455673-1	RAM	44
1	-	A		690125-1	WASHER, LAMINATED	43
1	-	A		690124-1	WASHER, RAM	42
1	-	A		7-21002-9	BOLT, CRIMPER (5/16x1.00)	41
1	-	A		23241-6	BALL, STEEL	40
1	-	A		690170-1	SPRING, COMPRESSION	39
1	-	C		690142-1	DISC, INSULATION	38
1	-	D		354777-1	WIRE DISC, PLASTIC	37
1	-	A		22480-5	WASHER, SPRING	36
1	-	B		690212-1	POST, RAM	35
1	-	B		690786-3	SUPPORT, TERMINAL	34
1	-	C		462544-1	PLATE, BASE SPECIAL	33
1	-	A		690432-3	SCREW, ADJUSTMENT	32
1	-	B		462543-1	BLOCK, SCREW SPECIAL	31
1	-	B		455689-1	BLOCK, STRIP GUIDE ADJ	30
1	-	C		843869-1	PLATE, STRIP GUIDE	29
1	-	C		455888-3	SPACER, FRONT SHEAR DEP	28
2	-	A		1-22284-0	SPRING, DRAG	27
1	-	B		240793-1	LEVER, DRAG RELEASE	26
1	-	B		240792-1	DRAG, TERMINAL	25
1	-	D		9-690504-9	GUIDE, STRIP (REAR)	24
1	-	A		690438-1	GUIDE, STRIP (FRONT)	23
						22
1	-	A		463756-1	GUIDE, SCRAP	21
						20
REF	-	C		462615-1	STRIPPER	19
						18
						17
						16
						15
						14
						13
1	-	A		5-22280-0	SPRING, SHEAR	12
1	-	B		690461-2	STOP, SHEAR (FRONT)	11
1	-	B		462548-1	HOLDER, SHEAR (FRONT) SP	10
1	-	B		462547-1	SHEAR, FLOAT (FRONT) SP	9
1	-	C		9-803653-9	ANVIL	8
						7
						6
1	-	A		462838-1	DEPRESSOR, SHEAR (FRONT) SP	5
1	-	B		238011-7	SPACER, BLOCK CRIMPER	4
1	-	C		9-456134-3	CRIMPER, INSULATION	3
1	-	C		455888-7	SPACER, CRIMPER	2
1	-	C		2-456401-1	CRIMPER, WIRE	1

PRE-FEED 1 5/8 STROKE

ROTATED 180°

RECOMMENDED SPARE PARTS.
 GREASE LIGHTLY.
 ITEM NOT SHOWN

QTY	REV	U/M	DWG SIZE	PART NO	DESCRIPTION	ITEM NO
-1	-	U/M				

REVISION OF EACH ASSY NO (WHEN BLANK, USE DWG REVISION)

QTY	REV	U/M	DWG SIZE	PART NO	DESCRIPTION	ITEM NO
-1	-	U/M				

DIMENSIONS IN INCHES. DO NOT SCALE PRINT. TOLERANCES UNLESS OTHERWISE SPECIFIED:
 2 PLC DEC ±.02
 3 PLC DEC ±.
 4 PLC DEC ±.

ANGLES ± - SURF TEXTURE: ✓ REMOVE BURRS, BREAK SHARP EDGES R.015 MAX

MATL - HT TR - FIN -

DR M. OBRINE 1/5/95 APP A. BEDDICK 1-5-95
 CHK 1-5-95 REL 2/22/95
 C. ERISMAN B. MORGAN

AMP AMP Incorporated Harrisburg, PA 17105-3608

NAME STRIPPER CRIMPER APPLICATOR MACHINE REF STRIPPER CRIMPER

SCALE - DWG NO 567910 SHEET 1 OF 1 REV C

CASE CODE 00779 CUSTOMER AND ASSEMBLY DRAWING 1 RESTRICTED TO

THIS DRAWING IS A CONTROLLED DOCUMENT.

THIS DRAWING IS UNCLASSIFIED - RELEASED FOR PUBLICATION BY AMP INCORPORATED. ALL RIGHTS RESERVED. REF: 2000