

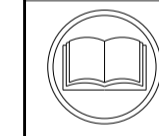
ATLANTIC VERSION TERMINATOR INTERFACE ADAPTER	PART NUMBER	REVISION	DESCRIPTION	FEED TYPE	APPLICATOR STYLE CONVERSION CHART					
					CONVERT TO	PART NUMBERS REQUIRED				
	2150426-2	A	FINE CRIMP HEIGHT ADJUST	PNEUMATIC	-	-	-	-	-	-
	2150426-5	A	FINE CRIMP HEIGHT ADJUST	SERVO LATCH PLATE	SERVO LATCH PLATE	2119951-1	1901697-1	8-2150426-5	-	2168400-7 (QUANTITY 2)
	2150426-6	A	NON-CRIMP HEIGHT ADJUST	SERVO LATCH PLATE	PNEUMATIC FEED	2119950-1	2119792-2	-	2119641-1	2063440-1
	2150426-7	A	FINE CRIMP HEIGHT ADJUST	NONE	-	-	-	-	-	-
	7-2150426-7	A	CRIMP TOOLING KIT	-	-	-	-	-	-	-

APPLICATOR DATA		
CRIMP	SIZE	TYPE
WIRE	2.79 mm [.110]	F
INSUL	-	-

APPLICATOR INSTRUCTIONS 408-10390

TERMINAL DATA: TE TERMINAL		TE CRIMP SPECIFICATION	
TERMINAL NAME: SHUR PLUG .156 DIA			
WIRE STRIP LENGTH		INSULATION DIAMETER RANGE	
2.88-3.48 mm [.113-.137 IN]			
TERMINAL APPLICATION SPECIFICATION	114-2042	-	-
TERMINALS APPLIED			
TE TERMINAL	TE TERMINAL	TE TERMINAL	TE TERMINAL
1217606-1			

WIRE SIZE	CRIMP HEIGHT mm [INCH]	CRIMP HEIGHT REFERENCE SETTING
14 AWG	2.01 +/- 0.05 [.079 +/- .002]	4.4
16 AWG	1.75 +/- 0.05 [.069 +/- .002]	7.0
18 AWG	1.63 +/- 0.05 [.064 +/- .002]	8.3



- RECOMMENDED SPARE PARTS
- GREASE BEARING SURFACES LIGHTLY
- 3. LUBRICATE DAILY PER THE APPLICATOR INSTRUCTION SHEET SUPPLIED WITH THE APPLICATOR.
- APPLICATOR SPECIFIC DATA TO BE ENTERED INTO BLANK MEMORY CHIP AT ASSEMBLY. SEE BELOW FOR PART NUMBER:
 PNEUMATIC FEED WITH "SMART APPLICATOR" CONVERSION: 8-2150426-4
 SERVO FEED WITH "FINE CRIMP HEIGHT ADJUST": 8-2150426-5
 SERVO FEED WITH "NON-CRIMP HEIGHT ADJUST": 8-2150426-6
- 5. ADJUSTMENT OF THE STRIPPER MAY BE REQUIRED WHEN MOVING THE APPLICATOR BETWEEN BENCH AND LEADMAKER APPLICATIONS.
- APPLY PART NUMBER 1-23419-5 LOCTITE TO THREADS OF ITEMS 62, 180 & 242. FOR -6 ONLY APPLY PART NUMBER 1-23419-5 LOCTITE TO THREADS OF ITEMS 37, 180 & 242.
- GREASE THREADS, GROOVE AND O-RING ON ITEMS 35 & 252.
- MAGNET, ITEM 166 MUST BE ORIENTED CORRECTLY IN ORDER TO PROPERLY ACTUATE THE COUNTER.
- CRIMP HEIGHT REFERENCE SETTING WAS THE SETTING USED WHEN THE APPLICATOR WAS QUALIFIED AT THE FACTORY. ADJUSTMENT MAY BE NECESSARY WHEN RUNNING APPLICATOR IN THE FIELD.
- TERMINAL PITCH NOT COMPATIBLE WITH MECHANICAL FEED.
- WHEN ASSEMBLING -6 NON-CRIMP HEIGHT ADJUST APPLICATOR USE SHIM PACK 2119957-2 TO ALIGN APPLICATOR'S MAXIMUM WIRE CRIMP HEIGHT AT NORMAL TERMINATOR SHUT HEIGHT

***WARNING**
 ON INSTALLATION, SET WIRE DISC, ITEM 40 TO LARGEST WIRE SIZE SETTING. USE OF SETTINGS BELOW MINIMUM REQUIRED CRIMP HEIGHT SETTING WILL CAUSE DAMAGE TO CRIMP TOOLING.

-	-	1	-	-	2119957-2	APPLICATOR SHIM PACK	260
-	1	-	1	1	8-21084-0	O-RING, .676 ID, .070 DIA. MAT.	252
-	-	-	-	1	2119640-1	PUSH ROD, AIR FEED	250
-	-	-	-	1	2079988-1	BUSHING, LCH5-12, MISUMI	249
-	-	-	-	1	2119641-1	FEED CAM, AIR FEED	248
-	1	-	1	1	2119798-1	DETENT PIN	247
-77	-7	-6	-5	-2	PART NO	DESCRIPTION	ITEM NO

ATLANTIC VERSION
 Shown on sheets 1 of 4 & 2 of 4
 (Pacific version shown on sheets 3 of 4 & 4 of 4)

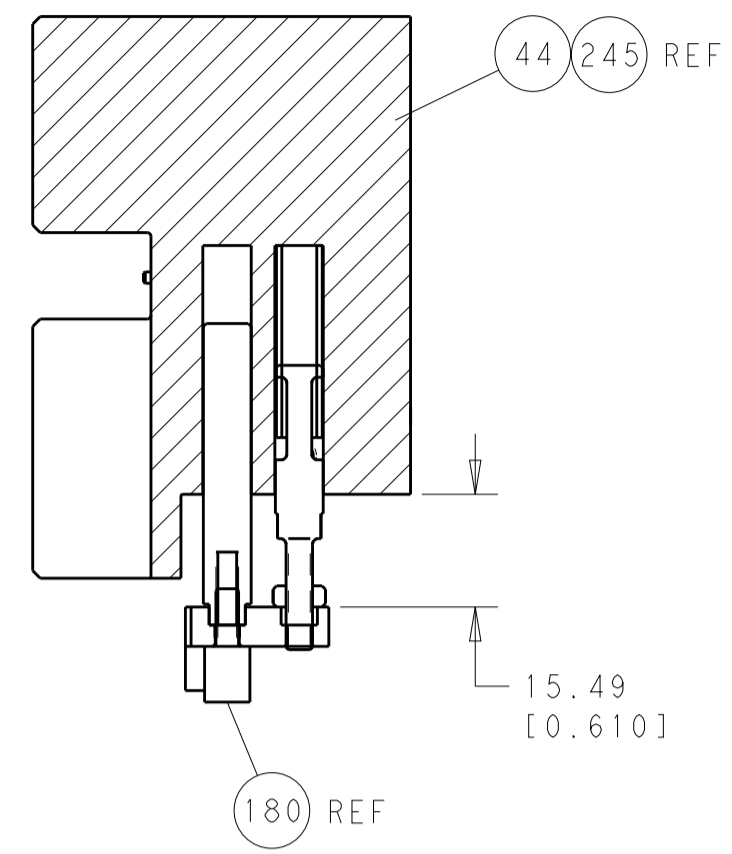
SET UP GAUGE		LOC	DIST	REVISIONS			
2119599-2		A	66	REV	DATE	BY	APPD
				1	DEVELOPMENT	14MAR2014	YY UG
				A	RELEASED	09MAY2014	YY TE

-	1	-	1	1	1-22279-3	SPRING, COMPRESSION	246	
-	-	1	-	-	2119759-1	RAM, AMP STYLE, END FEED, NON-ADJUST	245	
-	-	2	2	-	2168400-7	SHCS, LOW HEAD, RoHS, M5 X 10	240	
-	-	-	-	-	2119580-1	MECHANICAL FEED ASSEMBLY	239	
-	-	-	-	1	2063440-1	AIR FEED MODULE	238	
-	-	1	1	-	2119740-2	TAG, IDENTIFICATION	213	
-	-	REF	REF	-	1901697-1	FEED FINGER ASSEMBLY, EF	183	
-	1	1	1	1	1-1752354-4	STANDOFF, HOLD-DOWN	180	
-	1	1	1	1	6-993111-6	PIN, SLOTTED SPRING 3.0 X 14.0	177	
-	1	1	1	1	8-22280-7	SPRING, COMPRESSION	176	
-	1	1	1	1	1752353-2	GUIDE PIN, HOLDDOWN	175	
-	1	1	1	1	1901680-2	GUIDE PIN, HOLDDOWN	174	
-	-	-	-	2	21045-3	RING, RETAIN, EXTERN, 3/16 CRESCENT	172	
-	1	1	1	1	994969-1	MAGNET, RARE EARTH HIGH ENERGY	166	
-	REF	REF	REF	REF	994970-2	COUNTER, MAGNETIC	164	
-	-	-	-	1	240638-1	SPRING, FEED FINGER	163	
-	-	-	-	1	3-23627-7	PIN, RETAIN, GRVD, 3/16 X .854	137	
-	-	REF	REF	-	SEE NOTE 4	MEMORY CHIP, PROGRAMMED	135	
-	-	1	1	-	1633743-1	SERVO FEED LATCH ASM	133	
-	1	1	1	1	455888-4	SPACER, CRIMPER	82	
-	1	1	1	1	2119956-2	DOCUMENTATION PACKAGE	71	
-	2	2	2	2	2-18032-2	SCR, SET, FLT POINT M3 X 10.0	70	
-	1	-	-	1	2119740-1	TAG, IDENTIFICATION	67	
-	2	2	2	2	2168078-1	SCREW, DRIVE, RH, RoHS, 2 x .188	66	
-	1	1	1	1	1901681-1	HOLDDOWN, TERMINAL	65	
-	2	2	2	2	2168400-5	SHCS, LOW HEAD, RoHS, M4 X 20	64	
-	1	-	-	1	2119793-1	LIMITER, ADJUSTMENT BOLT	63	
-	3	-	3	3	992763-5	SCR, SET, SOC, CONE POINT, M3 X 4.0	62	
-	1	1	1	1	2079383-4	SCR, BHSC, RoHS (M4 X 8)	60	
-	-	-	-	-	5-18022-5	SCR, HEX HD CAP, M4 X 6.0	59	
-	-	-	-	-	2063961-1	FEED FINGER	58	
-	3	3	3	3	2168400-4	SHCS, LOW HEAD, RoHS, M4 X 8	57	
-	2	2	2	2	2168083-8	SCR, SKT HD CAP, RoHS, M4 X 16	56	
-	2	2	2	2	5018030-2	NUT, HEX, REG, RoHS, M4	55	
-	2	2	2	2	5018030-1	NUT, HEX, REG, RoHS, M3	54	
-	2	2	2	2	986965-8	NUT, LOCK, HEX, TORQUE (M4)	53	
-	1	1	1	1	1-5018030-0	NUT, HEX, REG, RoHS, M3.5	52	
-	-	-	-	1	2119792-2	PAWL, EF, AIR	51	
-	-	-	-	1	18023-9	SCR, SKT HD CAP M4 X 6.0	49	
-	-	-	-	-	2119652-1	FEED CAM, PRE FEED	48	
-	-	-	-	-	2119653-1	FEED CAM, POST FEED	47	
-	1	1	1	1	2119655-5	APPLICATOR BASIC ASSEMBLY, EF	46	
-	1	-	-	1	2119369-1	RAM, AMP STYLE, END FEED	44	
-	1	1	1	1	2079383-6	SCR, BHSC, RoHS (M8 X 12)	41	
-	1	-	-	1	2119645-1	DISC, NUMBERED FA WIRE ADJUSTMENT	40	
-	1	-	-	1	2119957-1	APPLICATOR SHIM PACK	39	
-	1	1	1	1	2119644-2	RAM WASHER, PRECISION	38	
-	1	1	1	1	2119085-1	FA HEAD, ATLANTIC STYLE	37	
-	1	-	-	1	2119092-1	BOLT, ADJUSTMENT	35	
-	7	7	7	7	1-18028-2	WASHER, FLAT, REG M4	33	
-	2	2	2	2	1-2168083-2	SCR, SKT HD CAP, RoHS, M4 X 25	31	
-	2	2	2	2	1-2168083-0	SCR, SKT HD CAP, RoHS, M4 X 10	29	
-	1	1	1	1	240639-1	STRIPPER (MACHINING)	27	
-	2	2	2	2	1320906-1	STUD, THREADED	25	
-	1	1	1	1	1-1752371-6	PLATE, STRIP GUIDE	24	
-	1	1	1	1	240825-6	PLATE, STRIP HOLD DOWN	23	
-	2	2	2	2	2-22281-3	SPRING, COMPRESSION	22	
-	1	1	1	1	1752373-4	DRAG	20	
-	2	2	2	2	1901259-6	GUIDE, LOWER STRIP	18	
-	4	4	4	4	1-2079383-1	SCR, BHSC, RoHS (M6 X 12)	17	
-	1	1	1	1	240641-6	SPACER	16	
-	1	1	1	1	1752360-1	SPACER, HOLD-DOWN	13	
-	1	1	1	1	240644-5	PLATE, REAR SHEAR	11	
-	2	2	2	2	8-240645-5	SPACER, SHEAR PLATE	10	
-	1	1	1	1	690796-1	PLATE, FRONT SHEAR	9	
-	1	1	1	1	1803002-5	ANVIL, COMBINATION, END FEED	8	
-	1	1	1	1	9-240651-5	BLADE, SLUG	7	
-	-	-	-	-	-	-	6	
-	1	1	1	1	240641-5	SPACER	5	
-	-	-	-	-	-	-	4	
-	-	-	-	-	-	-	3	
-	-	-	-	-	-	-	2	
-	1	1	1	1	1	7-456408-7	CRIMPER, WIRE PREMIUM	1
-77	-7	-6	-5	-2	PART NO	DESCRIPTION	ITEM NO	

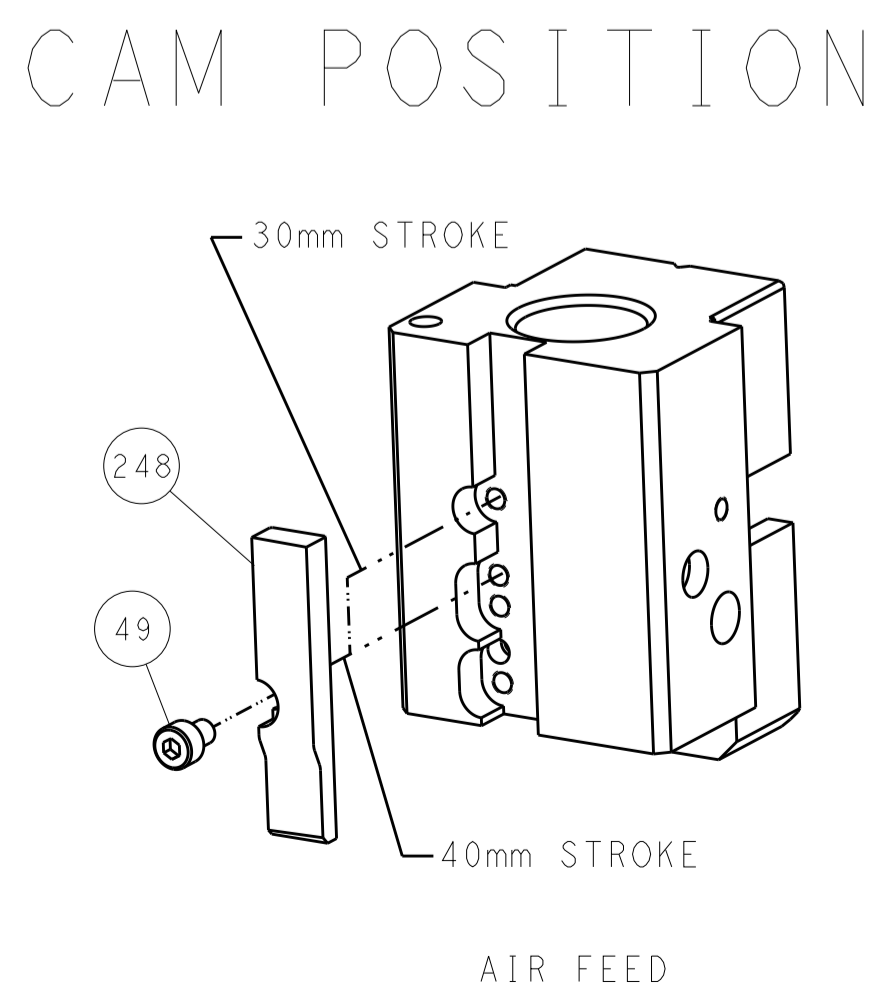
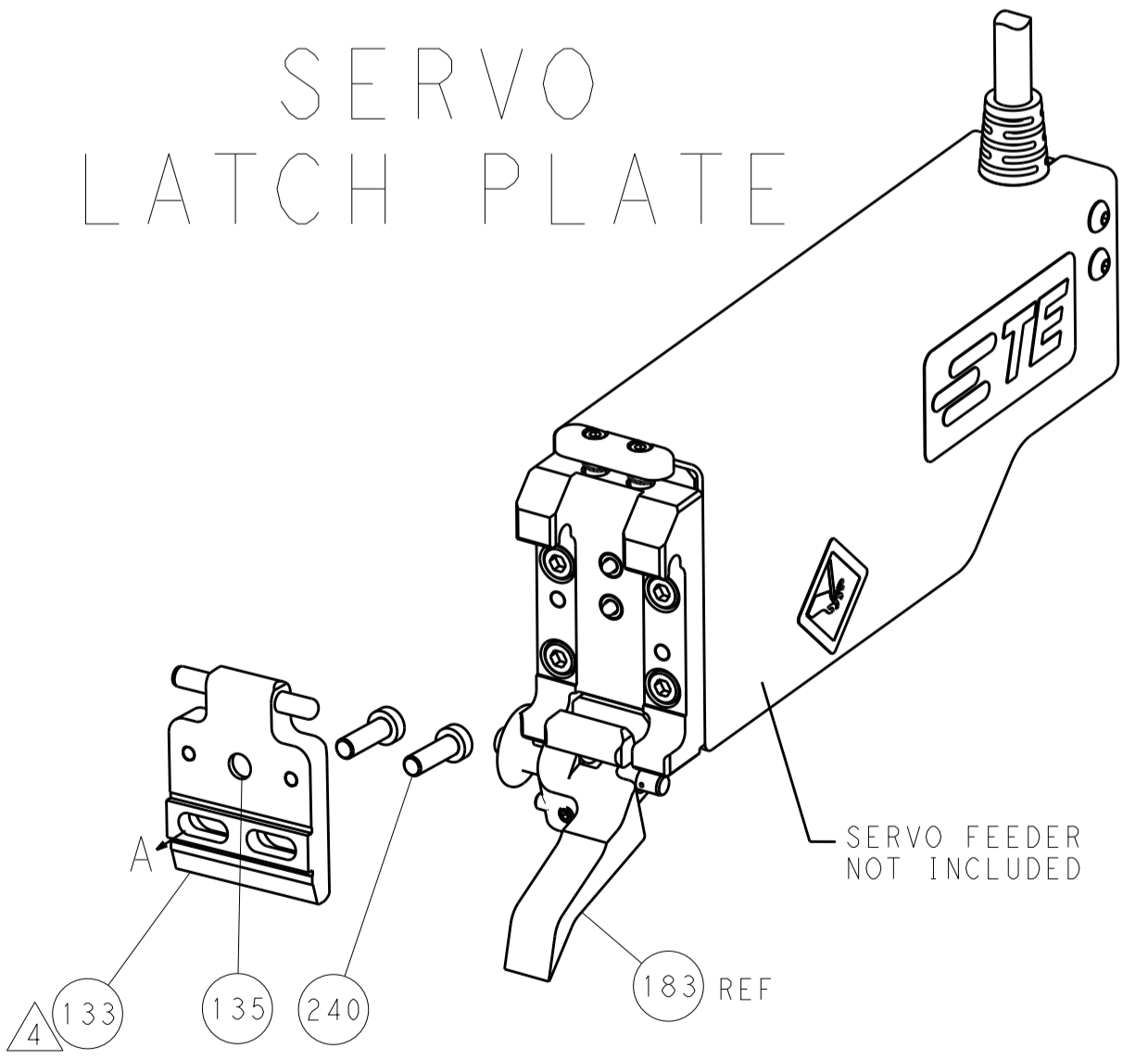
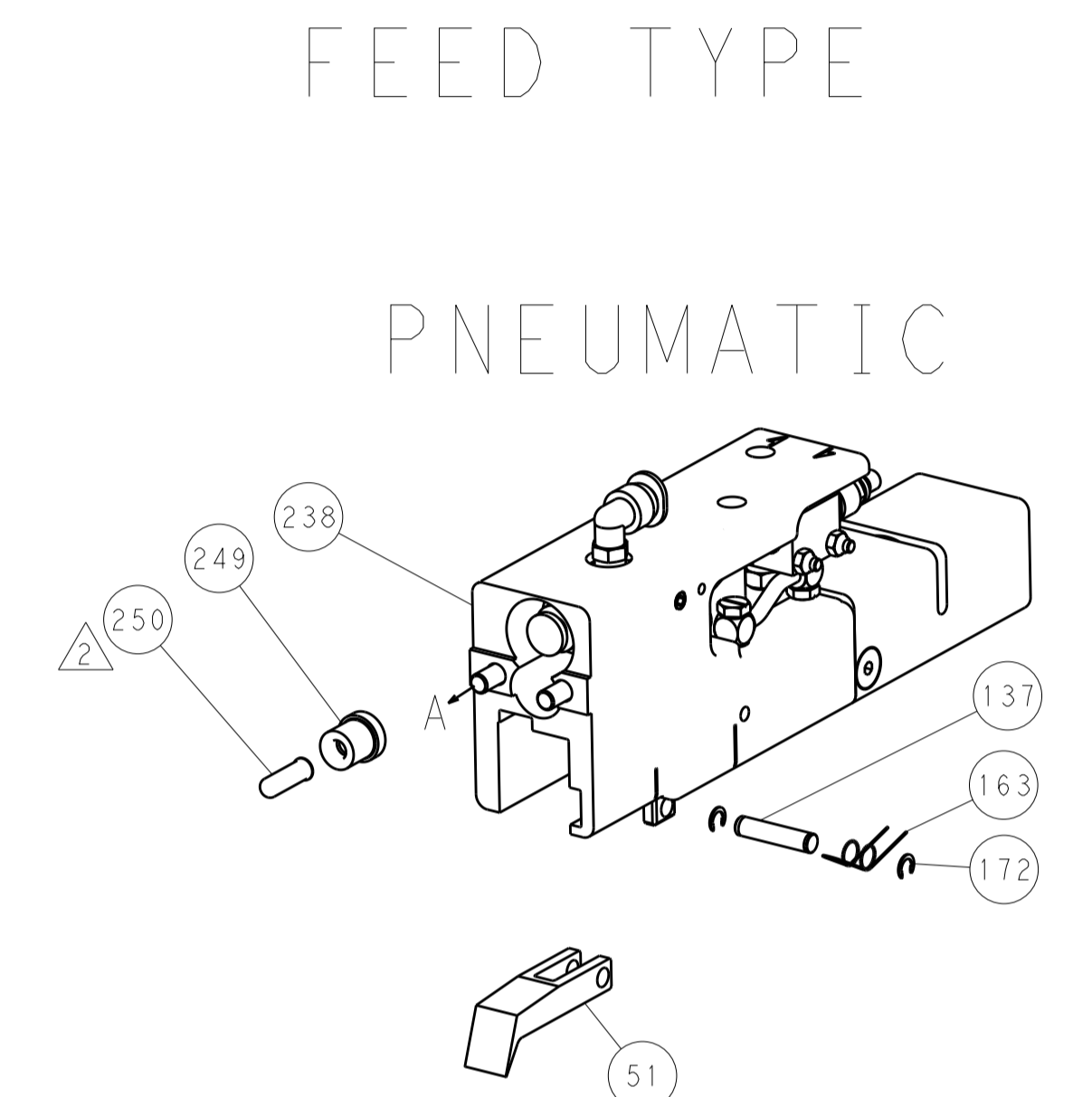
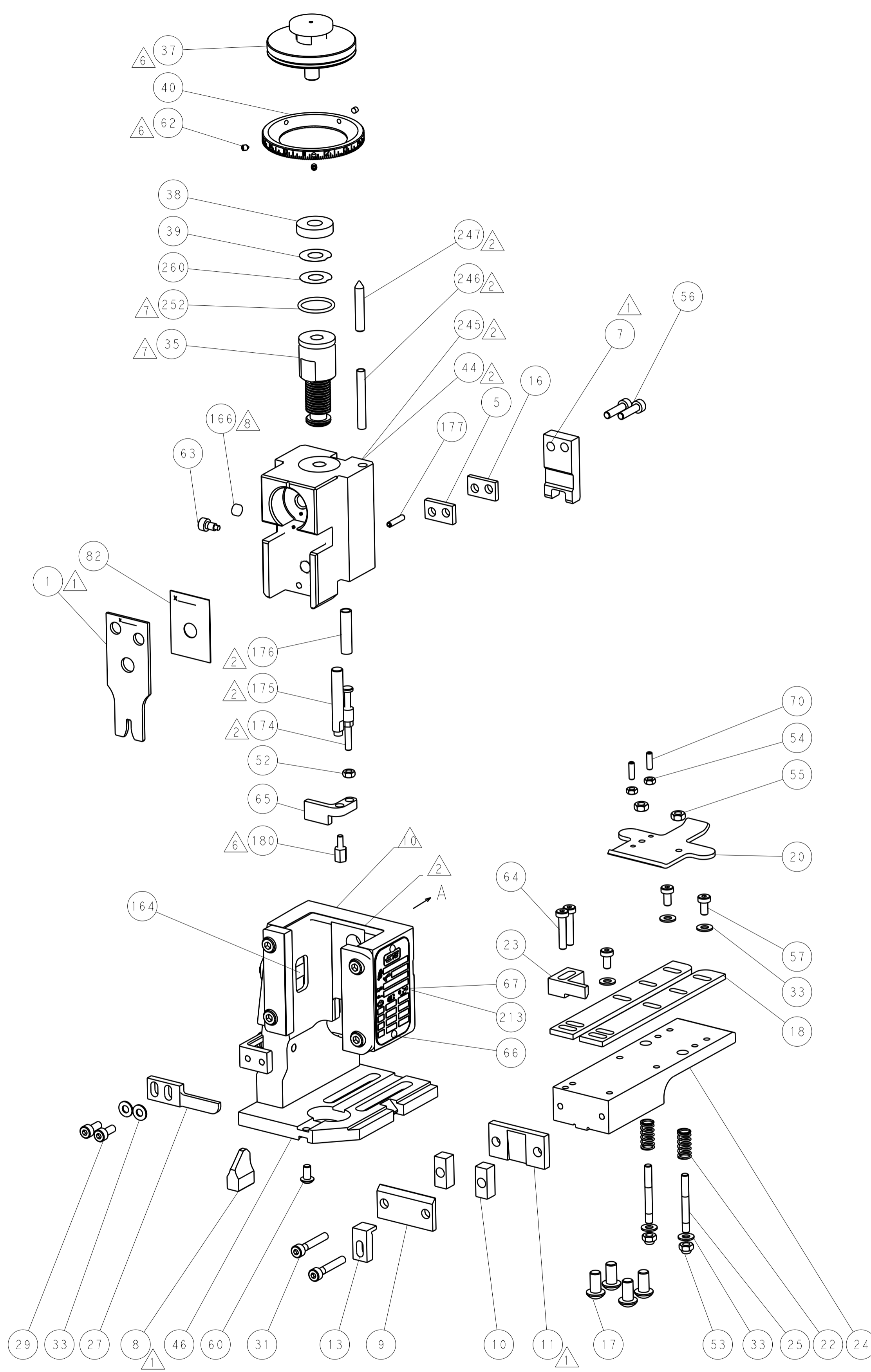
DIMENSIONS:		TOLERANCES UNLESS OTHERWISE SPECIFIED:		DWG		CHK		APPD		NAME	
mm	0 PLC ±.5	1 PLC ±.13	3 PLC ±.013	4 PLC ±.0001	Y. YIN	14MAR2014	G. BAILEY	14MAR2014	U. GUO	14MAR2014	TE Connectivity Harrisburg, PA 17105-3608
	FINISH			PRODUCT SPEC					Ocean End Feed Applicator		
MATERIAL		APPLICATION SPEC		SIZE	CAGE CODE	DRAWING NO	RESTRICTED TO				
				WEIGHT	A1	00779	©=2150426	Customer Accessible Production Drawing		SCALE	SHEET 1 OF 4

LOC	DIST	REV	DATE	BY	APPV
A	66				

REVISIONS			
REV	DATE	BY	APPV
-	-	-	-
-	-	-	-



HOLDDOWN SET-UP



CAM POSITION

ATLANTIC VERSION
 Shown on sheets 1 of 4 & 2 of 4
 (Pacific version shown on sheets 3 of 4 & 4 of 4)

DIMENSIONS:		TOLERANCES UNLESS OTHERWISE SPECIFIED:		DWG: Y. YIN 14MAR2014		TE Connectivity	
mm		0 PLC ±0.5		CHK: G. BAILEY 14MAR2014		Harrisburg, PA 17105-3608	
Ø		1 PLC ±0.13		APPV: H. GUO 14MAR2014		NAME: Ocean End Feed Applicator	
H		3 PLC ±0.013		PRODUCT SPEC		SIZE: CAGE CODE: DRAWING NO: RESTRICTED TO	
L		4 PLC ±0.001		APPLICATION SPEC		A11 00779 ©=2150426	
R		ANGLES ±0.001		WEIGHT		SCALE: 1:1 SHEET 2 OF 4 REV A	
FINISH		MATERIAL		Customer Accessible Production Drawing		SHEETS 3 & 4 ARE NOT REQUIRED FOR ATLANTIC VERSION	

PACIFIC VERSION TERMINATOR INTERFACE ADAPTER	PART NUMBER	REVISION	DESCRIPTION	FEED TYPE
	2-2150426-2	A	FINE CRIMP HEIGHT ADJUST	PNEUMATIC
	2-2150426-5	A	FINE CRIMP HEIGHT ADJUST	SERVO LATCH PLATE ⁴
	2-2150426-7	A	FINE CRIMP HEIGHT ADJUST	NONE
	7-2150426-7	A	CRIMP TOOLING KIT	-

APPLICATOR DATA		
CRIMP	SIZE	TYPE
WIRE	2.79 mm (.110)	F
INSUL	-	-
APPLICATOR INSTRUCTIONS 408-10390		

TERMINAL DATA: TE TERMINAL		TE CRIMP SPECIFICATION
TERMINAL NAME: SHUR PLUG .156 DIA		
WIRE STRIP LENGTH		INSULATION DIAMETER RANGE
2.88-3.48 mm (.113-.137 IN)		
TERMINAL APPLICATION SPECIFICATION	114-2042	
TERMINALS APPLIED ⁹		
TE TERMINAL	TE TERMINAL	TE TERMINAL
1217606-1		

WIRE SIZE	CRIMP HEIGHT mm [INCH]	CRIMP HEIGHT REFERENCE SETTING ⁹
14 AWG	2.01 +/- 0.05 [.079 +/- .002]	4.4
16 AWG	1.75 +/- 0.05 [.069 +/- .002]	7.0
18 AWG	1.63 +/- 0.05 [.064 +/- .002]	8.3

- RECOMMENDED SPARE PARTS
- GREASE BEARING SURFACES LIGHTLY
- 3. LUBRICATE DAILY PER THE APPLICATOR INSTRUCTION SHEET SUPPLIED WITH THE APPLICATOR.
- ⁴ APPLICATOR SPECIFIC DATA TO BE ENTERED INTO BLANK MEMORY CHIP AT ASSEMBLY. SEE BELOW FOR PART NUMBER:
PNEUMATIC FEED WITH "SMART APPLICATOR" CONVERSION: 8-2150426-4
SERVO FEED WITH "FINE CRIMP HEIGHT ADJUST": 8-2150426-5
- 5. ADJUSTMENT OF THE STRIPPER MAY BE REQUIRED WHEN MOVING THE APPLICATOR BETWEEN BENCH AND LEADMAKER APPLICATIONS.
- ⁶ APPLY PART NUMBER 1-23419-5 LOCTITE TO THREADS OF ITEMS 62, 180 & 242.
- GREASE THREADS, GROOVE AND O-RING ON ITEMS 139 & 153.
- MAGNET, ITEM 166 MUST BE ORIENTED CORRECTLY IN ORDER TO PROPERLY ACTUATE THE COUNTER.
- ⁹ CRIMP HEIGHT REFERENCE SETTING WAS THE SETTING USED WHEN THE APPLICATOR WAS QUALIFIED AT THE FACTORY. ADJUSTMENT MAY BE NECESSARY WHEN RUNNING APPLICATOR IN THE FIELD.
- ¹⁰ TERMINAL PITCH NOT COMPATIBLE WITH MECHANICAL FEED.
- ¹¹ THE RECOMMENDED SET-UP FOR END FEED APPLICATORS IS POST-FEED WITH ITEM 2119653-1. THE APPLICATOR CAN BE CONFIGURED FOR PRE-FEED WITH ITEM 2119652-1 BUT MAY ENCOUNTER PROBLEMS WITH SOME APPLICATIONS. FEED ISSUES OR TERMINAL JAMMING MAY OCCUR IN THE PRE-FEED CONFIGURATION.

***WARNING**
ON INSTALLATION, SET WIRE DISC, ITEM 40 TO LARGEST WIRE SIZE SETTING. USE OF SETTINGS BELOW MINIMUM REQUIRED CRIMP HEIGHT SETTING WILL CAUSE DAMAGE TO CRIMP TOOLING.

	ITEM NO	DESCRIPTION	ITEM NO
- 1 1 1	2119782-1	FINE ADJUST HEAD ASM, PACIFIC STYLE	251
- - - 1	2119640-1	PUSH ROD, AIR FEED	250
- - - 1	2079988-1	BUSHING, LCH5-12, MISUMI	249
- 1 1 1	1-22279-3	SPRING, COMPRESSION	246
-77-27-25-22	PART NO	DESCRIPTION	ITEM NO

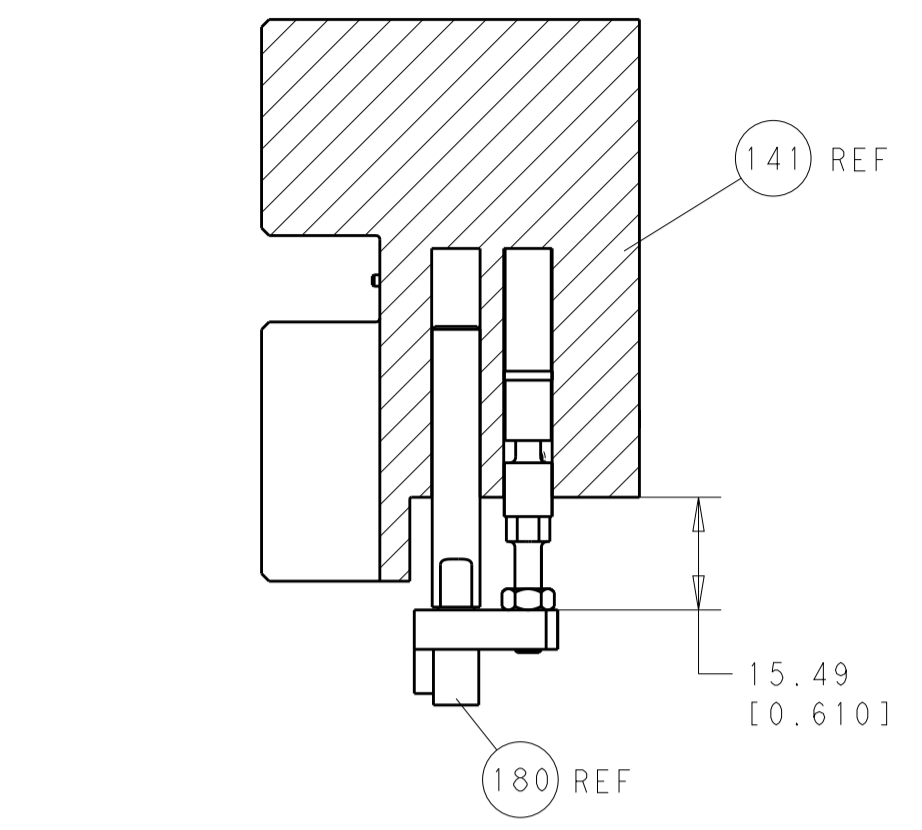
PACIFIC VERSION
Shown on sheets 3 of 4 & 4 of 4
(Atlantic version shown on sheets 1 of 4 & 2 of 4)

SET UP GAUGE	LOC	DIST	REVISIONS			
2119599-2	A	66	REV	DATE	BY	APPV
			-	SEE SHEET 1	-	-

REV	DATE	BY	APPV	DESCRIPTION	DATE	BY	APPV
- - 2 -				2168400-7 SHCS, LOW HEAD, RoHS, M5 X 10			240
- - - -				2119580-1 MECHANICAL FEED ASSEMBLY			239
- - - 1				2063440-1 AIR FEED MODULE			238
- - 1 -				2119740-2 TAG, IDENTIFICATION			213
- 4 4 4				2079383-9 SCR, BHSC, RoHS (M6 X 20)			186
- - REF -				1901697-1 FEED FINGER ASSEMBLY, EF			183
- 1 1 1				1-1752354-4 STANDOFF, HOLD-DOWN			180
- 1 1 1				6-993111-6 PIN, SLOTTED SPRING 3.0 X 14.0			177
- 1 1 1				8-22280-7 SPRING, COMPRESSION			176
- 1 1 1				1752353-2 GUIDE PIN, HOLDDOWN			175
- 1 1 1				1901680-2 GUIDE PIN, HOLDDOWN			174
- - - 2				21045-3 RING, RETAIN, EXTERN, 3/16 CRESCENT			172
- 1 1 1				994969-1 MAGNET, RARE EARTH HIGH ENERGY			166
- REFREFREF				994970-2 COUNTER, MAGNETIC			164
- - - 1				240638-1 SPRING, FEED FINGER			163
- 1 1 1				8-21084-1 O-RING, .801 ID, .070 DIA. MAT.			153
- - - 1				2119641-2 FEED CAM, AIR FEED			152
- 1 1 1				2119798-2 DETENT PIN			145
- 1 1 1				2079383-8 SCR, BHSC, RoHS (M4 X 16)			144
- - - -				2119653-2 FEED CAM, POST FEED			142
- 1 1 1				2119655-6 APPLICATOR BASIC ASSEMBLY, EF			141
- 1 1 1				2119651-1 RAM, ASIAN STYLE, END FEED			140
- 1 1 1				2119092-2 BOLT, ADJUSTMENT			139
- - - 1				3-23627-7 PIN, RETAIN, GRVD, 3/16 X .854			137
- - REF -				SEE NOTE 4 MEMORY CHIP, PROGRAMMED			135
- - 1 -				1633743-1 SERVO FEED LATCH ASM			133
- 1 1 1				455888-4 SPACER, CRIMPER			82
- 1 1 1				2119956-2 DOCUMENTATION PACKAGE			71
- 2 2 2				2-18032-2 SCR, SET, FLT POINT M3 X 10.0			70
- 1 - 1				2119740-1 TAG, IDENTIFICATION			67
- 2 2 2				2168078-1 SCREW, DRIVE, RH, RoHS, 2 x .188			66
- 1 1 1				1901681-1 HOLDDOWN, TERMINAL			65
- 2 2 2				2168400-5 SHCS, LOW HEAD, RoHS, M4 X 20			64
- 1 1 1				2119793-1 LIMITER, ADJUSTMENT BOLT			63
- 3 3 3				992763-5 SCR, SET, SOC, CONE POINT, M3 x 4.0			62
- - - -				5-18022-5 SCR, HEX HD CAP, M4 X 6.0			59
- - - -				2063961-1 FEED FINGER			58
- 3 3 3				2168400-4 SHCS, LOW HEAD, RoHS, M4 X 8			57
- 2 2 2				2168083-8 SCR, SKT HD CAP, RoHS, M4 X 16			56
- 2 2 2				5018030-2 NUT, HEX, REG, RoHS, M4			55
- 2 2 2				5018030-1 NUT, HEX, REG, RoHS, M3			54
- 2 2 2				986965-8 NUT, LOCK, HEX, TORQUE (M4)			53
- 1 1 1				1-5018030-0 NUT, HEX, REG, RoHS, M3.5			52
- - - 1				2119792-2 PAWL, EF, AIR			51
- - - 1				18023-9 SCR, SKT HD CAP M4 X 6.0			49
- - - -				2119652-1 FEED CAM, PRE FEED			48
- 1 1 1				2079383-6 SCR, BHSC, RoHS (M8 X 12)			41
- 1 1 1				2119645-1 DISC, NUMBERED FA WIRE ADJUSTMENT			40
- 1 1 1				2119957-1 APPLICATOR SHIM PACK			39
- 1 1 1				2119644-2 RAM WASHER, PRECISION			38
- 7 7 7				1-18028-2 WASHER, FLAT, REG M4			33
- 2 2 2				1-2168083-2 SCR, SKT HD CAP, RoHS, M4 X 25			31
- 2 2 2				1-2168083-0 SCR, SKT HD CAP, RoHS, M4 X 10			29
- 1 1 1				240639-1 STRIPPER (MACHINING)			27
- 2 2 2				1320906-1 STUD, THREADED			25
- 1 1 1				1-1752371-6 PLATE, STRIP GUIDE			24
- 1 1 1				240825-6 PLATE, STRIP HOLD DOWN			23
- 2 2 2				2-22281-3 SPRING, COMPRESSION			22
- 1 1 1				1752373-4 DRAG			20
- 2 2 2				1901259-6 GUIDE, LOWER STRIP			18
- 1 1 1				240641-6 SPACER			16
- 1 1 1				1752360-1 SPACER, HOLD-DOWN			13
- 1 1 1				240644-5 PLATE, REAR SHEAR			11
- 2 2 2				8-240645-5 SPACER, SHEAR PLATE			10
- 1 1 1				690796-1 PLATE, FRONT SHEAR			9
1 1 1 1				1803002-5 ANVIL, COMBINATION, END FEED			8
- 1 1 1				9-240651-5 BLADE, SLUG			7
- - - -				-			6
- 1 1 1				240641-5 SPACER			5
- - - -				-			4
- - - -				-			3
- - - -				-			2
1 1 1 1				7-456408-7 CRIMPER, WIRE PREMIUM			1

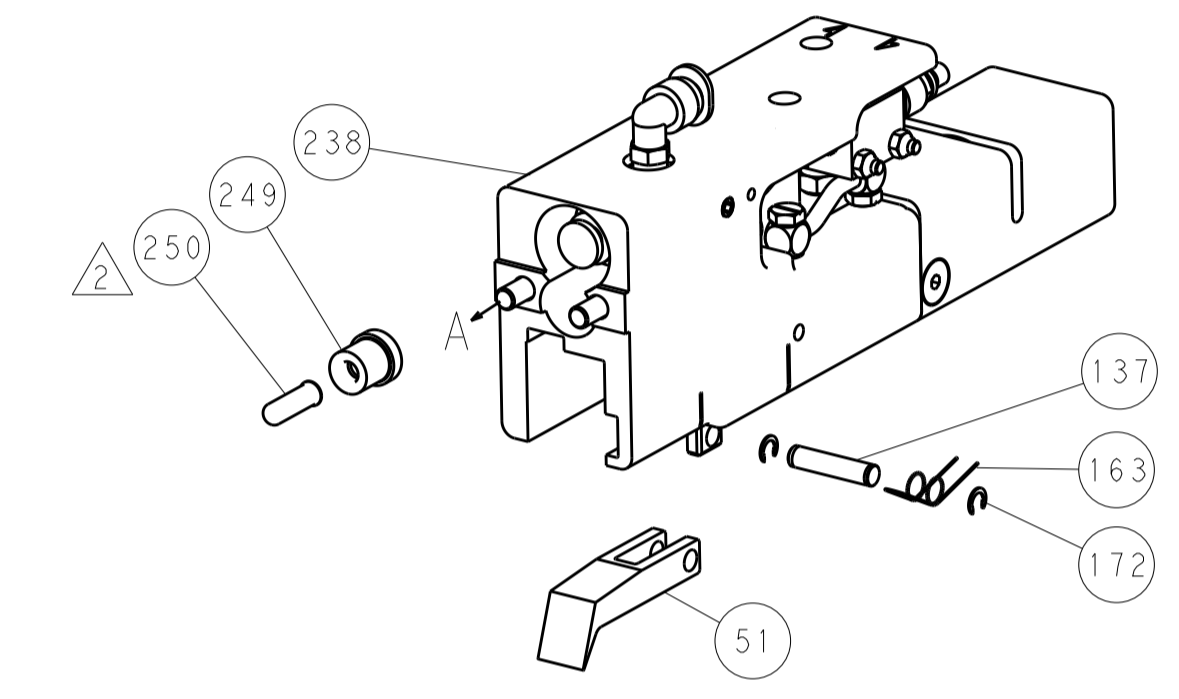
DIMENSIONS:		TOLERANCES UNLESS OTHERWISE SPECIFIED:		DRAWING NO		RESTRICTED TO	
mm	0 PLC ±.5	1 PLC ±0.5	2 PLC ±0.13	3 PLC ±0.013	4 PLC ±0.0013	ANGLES ±.0001	FINISH
MATERIAL				FINISH			
WEIGHT				SCALE			
Customer Accessible Production Drawing				SCALE 1:1 SHEET 3 OF 4 REV A			

LOC		DIST		REVISIONS			
A	66	P	LTM	DESCRIPTION	DATE	DWN	APVD
		-	-	SEE SHEET 1	-	-	-

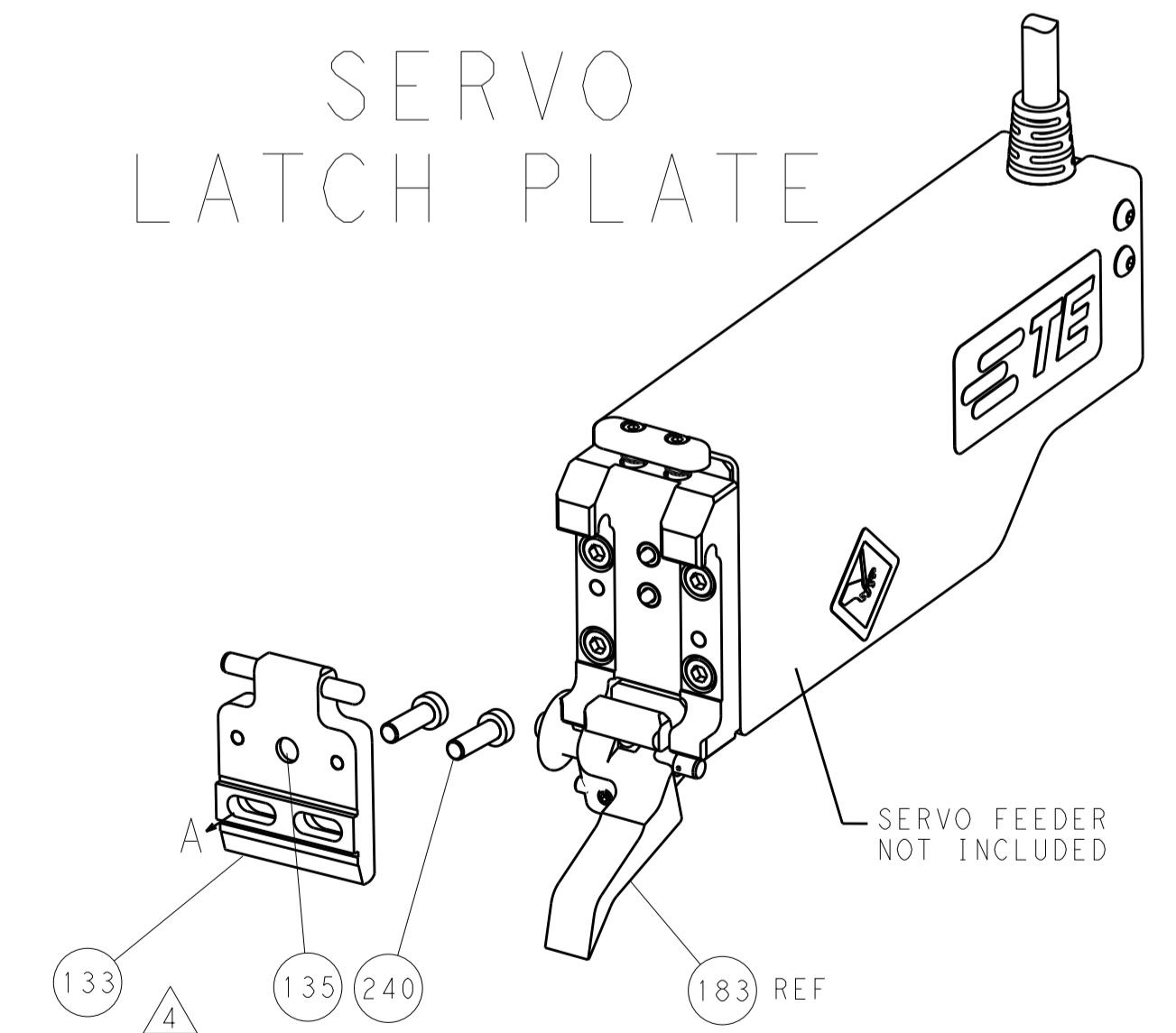


HOLDDOWN SET-UP

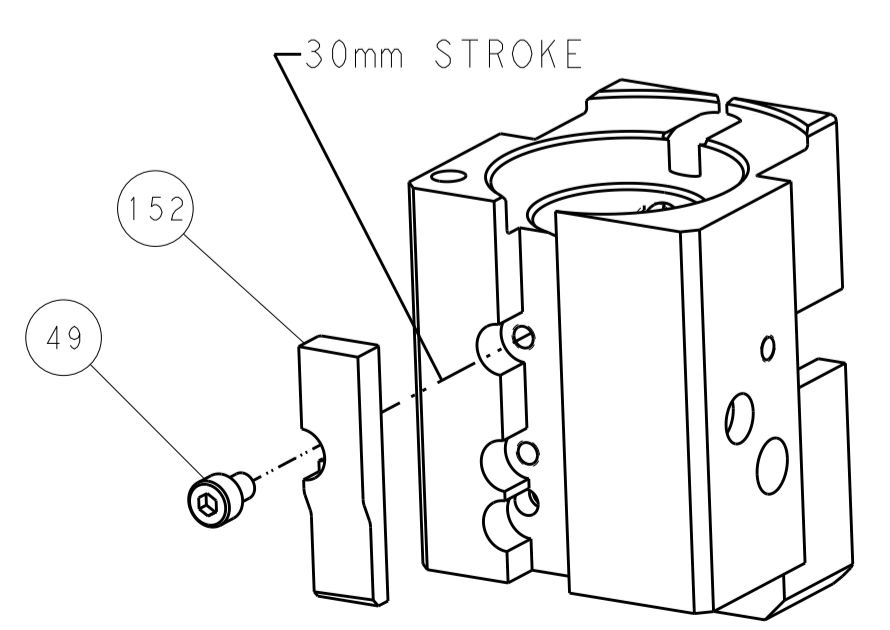
FEED TYPE
PNEUMATIC



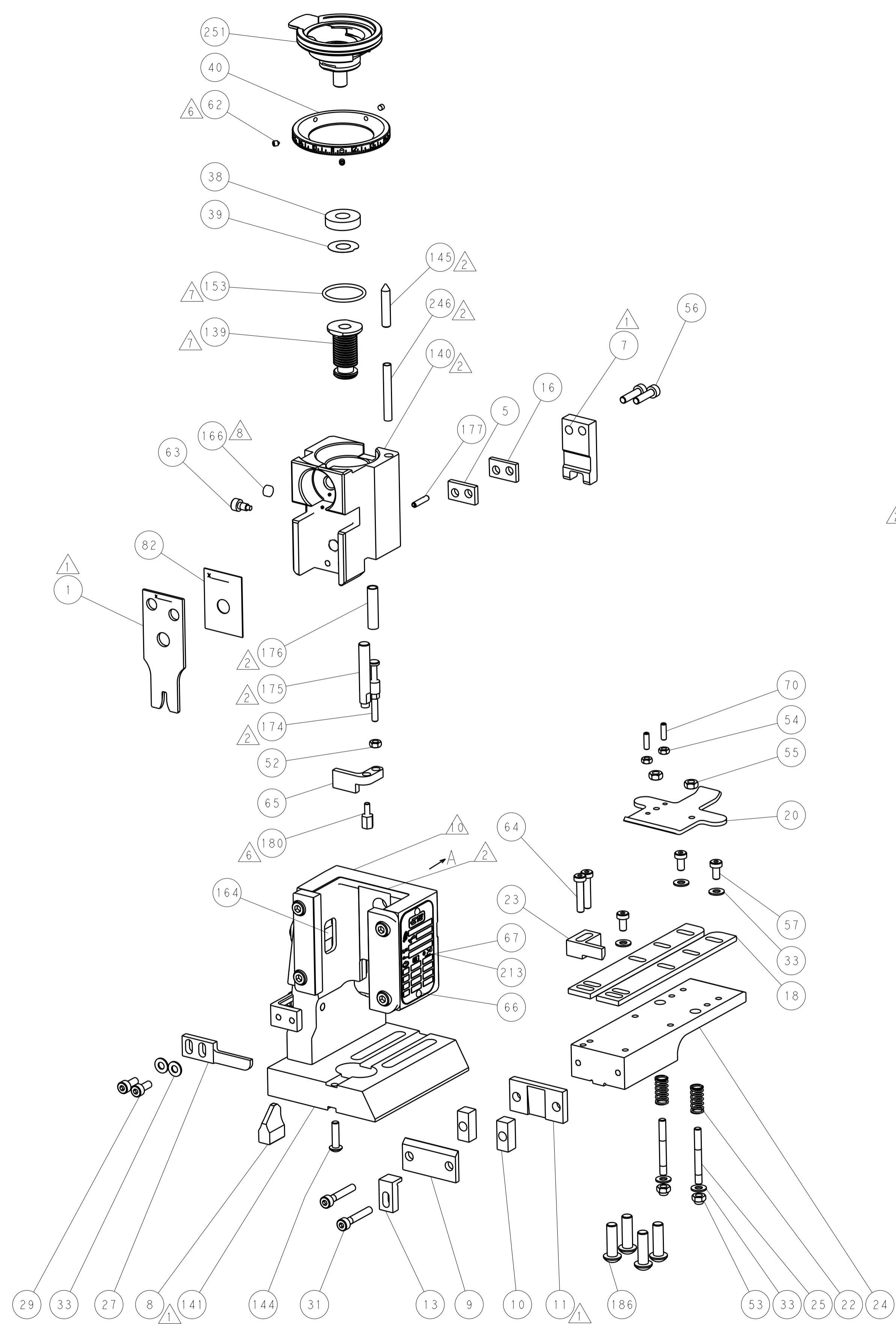
SERVO LATCH PLATE



CAM POSITION



AIR FEED



PACIFIC VERSION
 Shown on sheets 3 of 4 & 4 of 4
 (Atlantic version shown on sheets 1 of 4 & 2 of 4)

DIMENSIONS:		TOLERANCES UNLESS OTHERWISE SPECIFIED:		DWN Y. YIN 14MAR2014		STE TE Connectivity	
mm	0 PLC ±0.5	1 PLC ±0.5	2 PLC ±0.13	3 PLC ±0.013	4 PLC ±0.001	5 PLC ±0.001	Harrisburg, PA 17105-3608
MATERIAL:		FINISH:		CHK G. BAILEY 14MAR2014		NAME	
				APVD H. GUO 14MAR2014		Ocean End Feed Applicator	
				PRODUCT SPEC		SIZE CAGE CODE DRAWING NO	
				APPLICATION SPEC		A1 00779 C=2150426	
				WEIGHT		RESTRICTED TO	
				Customer Accessible Production Drawing		SCALE 1:1 SHEET 4 OF 4 REV A	