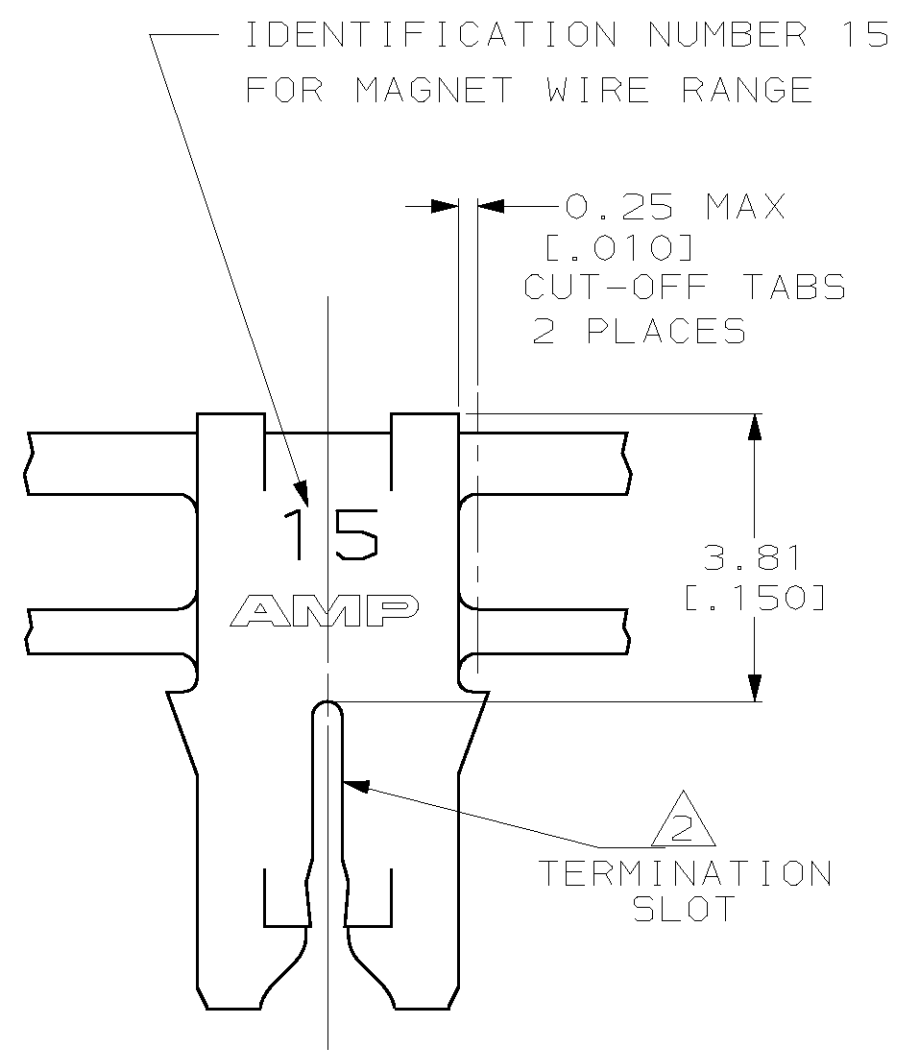
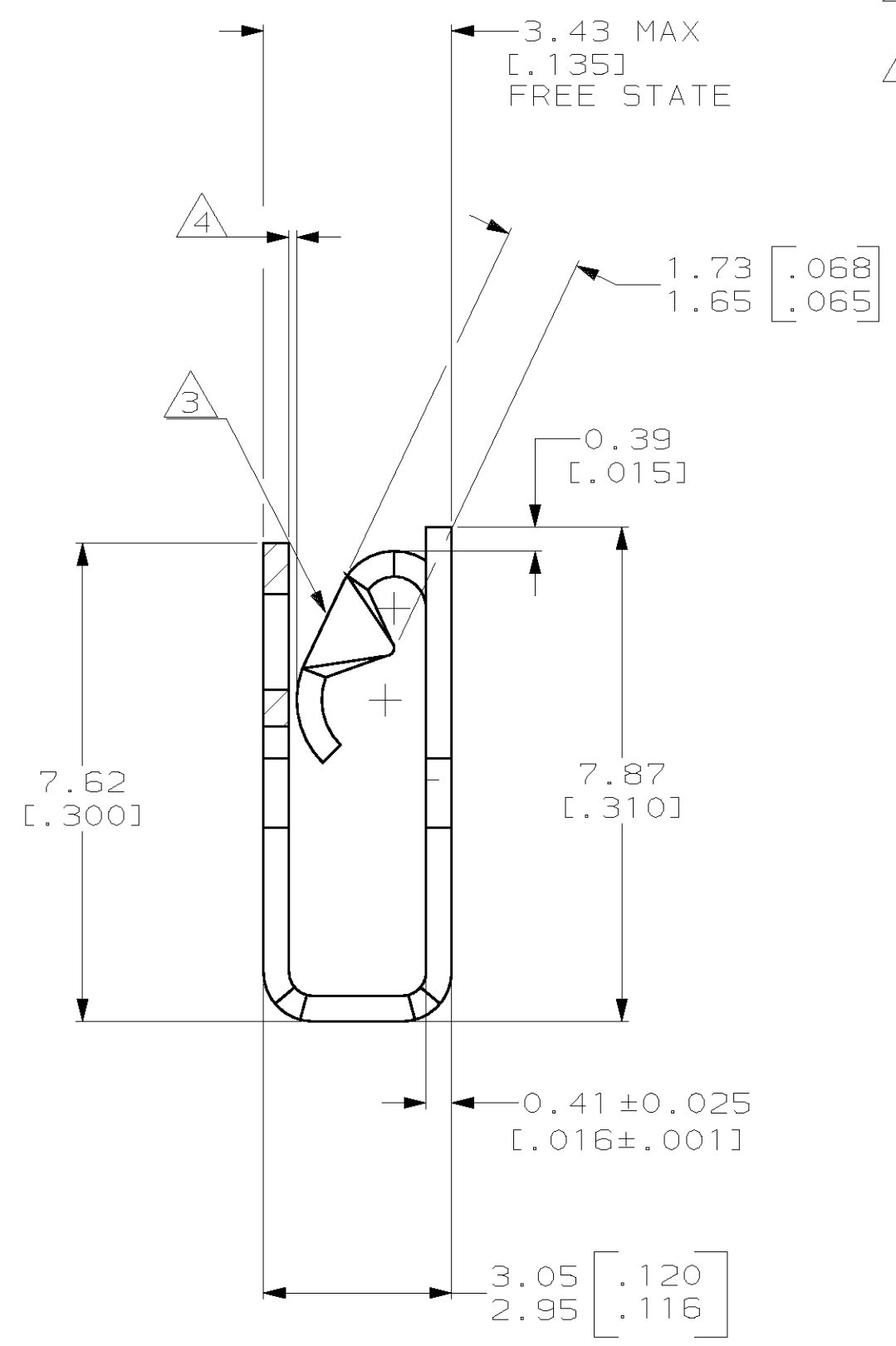
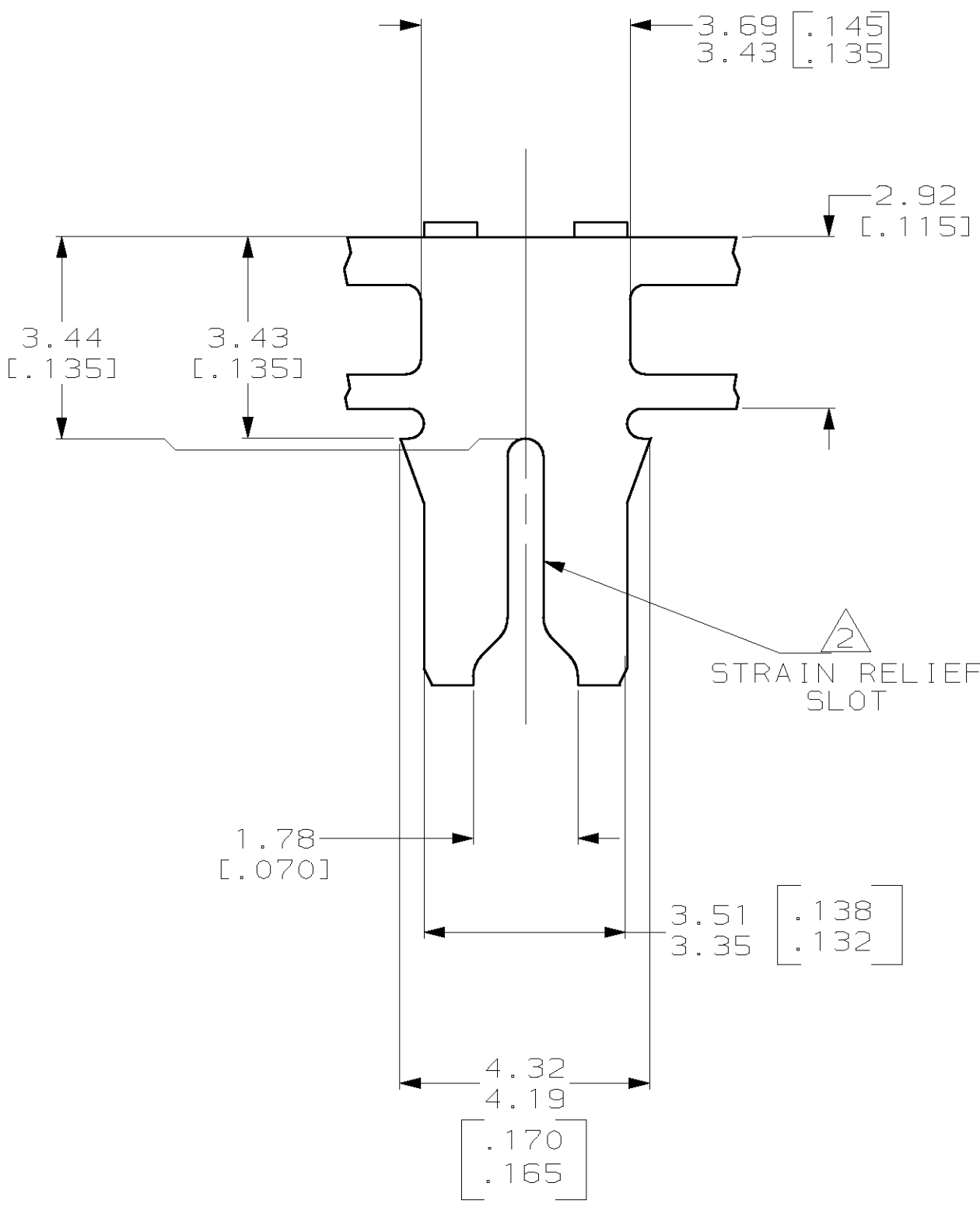
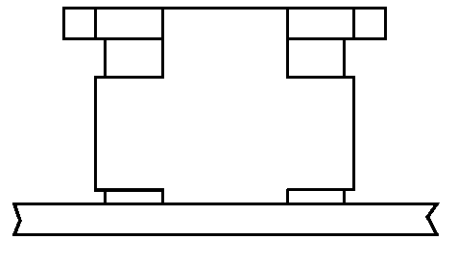


THIS DRAWING IS UNPUBLISHED. RELEASED FOR PUBLICATION  
 BY AMP INCORPORATED. ALL RIGHTS RESERVED.

LOC		DIST		REVISIONS			
P	LTR	DESCRIPTION		DATE	DWN	APVD	
AF	50	B	REVISED PER 063A-0047-02	05FEB02	MF	KR	

- 1 CONTINUOUS STRIP ON REELS WITH TERMINALS LOCATED ON 5.59±0.08 [.220±.003] CENTERS
- 2 SLOT ACCEPTS A 0.54-0.64mm [#23.5-#22] AWG COPPER MAGNET WIRE.
- 3 MATES WITH STANDARD MAG-MATE STYLED POKE-IN TAB TERMINAL.
- 4 WHEN FREE STATE IS COMPRESSED TO 3.23 [.127] DIMENSION GAP BETWEEN SPRING AND CARRIER IS TO BE 0.30 [.012] MAX.
- 5 0.002032 [.000080] MIN TIN OVER 0.00127 [.000050] MIN NICKEL UNDERPLATE.
- 6 ANTI-FRETTING LUBRICANT APPLIED.
- 7 0.00382 [.000150] MIN SILVER PLATE OVER 0.00127 [.000050] MIN NICKEL UNDERPLATE.
- 8 PRELIMINARY - NOT FOR PRODUCTION.



FINISH	MATERIAL	PART NUMBER
7	4M BRASS	8 1217689-4
5 6	H04 PHOSPHOR BRONZE	8 1217689-3
5 6	4M BRASS	8 1217689-2
5	4M BRASS	1217689-1

THIS DRAWING IS A CONTROLLED DOCUMENT.		DWN SAMUEL D. WYNN 150C12001	<b>AMP</b> AMP Incorporated Harrisburg, PA 17105-3608	
DIMENSIONS: mm [INCHES]		CHK MICHAEL S. FEHER 170C12001		
TOLERANCES UNLESS OTHERWISE SPECIFIED:		APVD KURT A. RANDOLPH 170C12001	NAME	
0 PLC ±		PRODUCT SPEC	SPECIAL LEAF CONTACT, 300 SERIES MAG-MATE™	
1 PLC ±		APPLICATION SPEC	SIZE CAGE CODE DRAWING NO RESTRICTED TO	
2 PLC ±0.25 [.010]		108-2012	A2 00779 C- 1217689	
3 PLC ±		114-2046	SCALE 10:1 SHEET 1 OF 1 REV B	
4 PLC ±		WEIGHT -		
ANGLES ±		CUSTOMER DRAWING		
MATERIAL SEE TABLE		FINISH SEE TABLE		

1217689