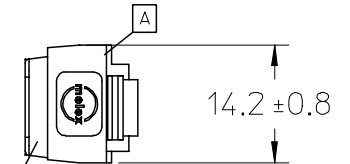
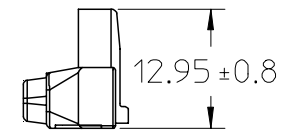
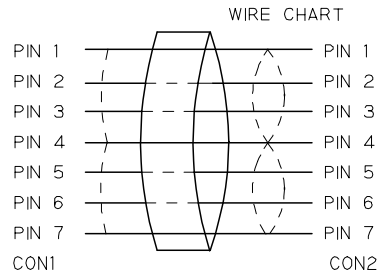
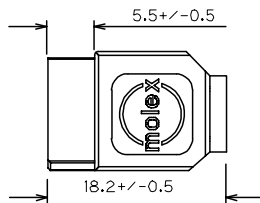
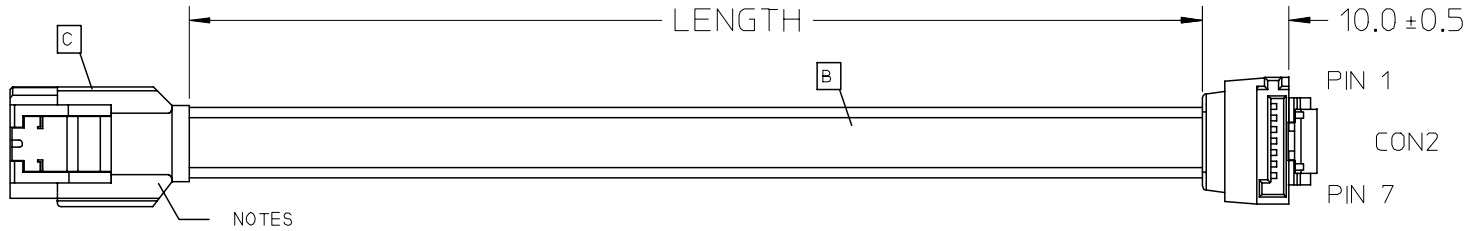
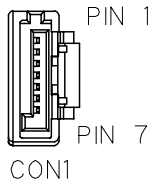


| 6 | 5 | 4 | 3 | 2 | 1 | | | | | | | | | | | | | | | |
|--|-------|--|----|---|----------|-------|--------|----------|-------|--------|----------|-------|--------|---------|-------|--------|---|--|---|--|
| <p>WBORD_A.BOR REV A 97/05/14 LEVEL 3</p> | | | | | | | | | | | | | | | | | | | | |
| <p>EC NO. C22005-0098 DRAWN: [Signature] CHKD: [Signature] APPR: [Signature]</p> | | <p>EC NO. [Signature] DRAWING: YANG 04/08/03 CHKD: [Signature] APPR: [Signature]</p> | | <p>QUALITY SYMBOLS MAJOR: ▽ = 0 CRITICAL: ▽ = 0</p> | | | | | | | | | | | | | | | | |
| <p>GENERAL TOLERANCES (UNLESS SPECIFIED)</p> <table border="1"> <tr> <th></th> <th>mm</th> <th>INCH</th> </tr> <tr> <td>4 PLACES</td> <td>±0.15</td> <td>±0.006</td> </tr> <tr> <td>3 PLACES</td> <td>±0.20</td> <td>±0.008</td> </tr> <tr> <td>2 PLACES</td> <td>±0.30</td> <td>±0.012</td> </tr> <tr> <td>1 PLACE</td> <td>±0.40</td> <td>±0.016</td> </tr> </table> | | | mm | INCH | 4 PLACES | ±0.15 | ±0.006 | 3 PLACES | ±0.20 | ±0.008 | 2 PLACES | ±0.30 | ±0.012 | 1 PLACE | ±0.40 | ±0.016 | <p>SCALE: N.T.S. DESIGN UNITS: <input checked="" type="checkbox"/> mm <input type="checkbox"/> INCH</p> <p>DRAWN BY: * DATE: GX YANG 04/08/03 CHECKED BY: * DATE: LUCKY 04/08/03 APPROVED BY: * DATE: HANS 04/08/03</p> | | <p>TITLE: S-ATA STRAIGHT LATCHING TO R/A LATCHING SIGNAL CBL RED.0.5M.1.0M</p> <p>MOLEX INCORPORATED</p> | |
| | mm | INCH | | | | | | | | | | | | | | | | | | |
| 4 PLACES | ±0.15 | ±0.006 | | | | | | | | | | | | | | | | | | |
| 3 PLACES | ±0.20 | ±0.008 | | | | | | | | | | | | | | | | | | |
| 2 PLACES | ±0.30 | ±0.012 | | | | | | | | | | | | | | | | | | |
| 1 PLACE | ±0.40 | ±0.016 | | | | | | | | | | | | | | | | | | |
| <p>CAD FILENAME</p> | | <p>MATERIAL NO. 68561-0016/17 DRAWING NO. E-68561-002</p> | | <p>SHEET NO. 1 OF 1 SIZE A4</p> | | | | | | | | | | | | | | | | |
| <p>THIS DRAWING CONTAINS INFORMATION THAT IS PROPRIETARY TO MOLEX INCORPORATED AND SHOULD NOT BE USED WITHOUT WRITTEN PERMISSION.</p> | | | | | | | | | | | | | | | | | | | | |

7 6 5 4 3 2 1



NOTE:
PHYSICAL

1. OUTER MOLD WITH BLACK PVC RESIN 887800042

ELECTRICAL PERFORMANCE:

- 2. DIELECTRONIC STRENGTH: 500V DC
- 3. INSULATION RESISTANCE: 100M OHMS
- 4. CONDUCTIVE RESISTOR: 2 OHMS

| MOLEX P/N | LENGTH (mm) | LENGTH (inch) | DESCRIPTION |
|------------|-------------|---------------|---|
| 68561-0017 | 1000+/-20 | 40.0+/-0.8 | S-ATA LATCHING STRAIGHT TO R/A CABLE. RED |
| 68561-0016 | 500+/-10 | 20.0+/-0.4 | S-ATA LATCHING STRAIGHT TO R/A CABLE. RED |

| ITEM | DESCRIPTION | L | QTY. |
|------|------------------------------------|-----|------|
| C | S-ATA STRAIGHT CONN. 674899002 | | 1 |
| B | 2PX26AWG S-ATA CABLE RED 887808052 | N/A | 1 |
| A | S-ATA R/A CONN. 674890002 | | 1 |

| | | | | | | | | | | | | |
|--|--|-------------------------------|--|------|----------------------------|----------------------|---|---|------------------------|--|--|--|
| ENTER DESCRIPTION EC NO: DG2005-0009 DRWN: GXYANG CHKD: APPR: BOCHEN | 2004/08/11 2004/08/18 2004/08/18 | QUALITY SYMBOLS ▽=0 ◻=0 | GENERAL TOLERANCES (UNLESS SPECIFIED) | | DIMENSION STYLE MM ONLY | | SCALE --- | DESIGN UNITS METRIC | THIRD ANGLE PROJECTION | | | |
| | | | | mm | INCH | DRAWN BY GX YANG | DATE 04/08/10 | TITLE S-ATA STRAIGHT LATCHING TO R/A LATCHING SIGNAL CBL RED, 0.5M, 1.0M | | | | |
| | | | 4 PLACES | ±--- | ±--- | CHECKED BY TEDDY | DATE 04/08/10 | | | | | |
| | | | 3 PLACES | ±--- | ±--- | APPROVED BY BORON | DATE 04/08/10 | MOLEX INCORPORATED DOCUMENT NO. SD-68561-002 SHEET NO. 1 OF 1 | | | | |
| 2 PLACES | ±--- | ±--- | MATERIAL NO. 685610016/7 | | | | | | | | | |
| 1 PLACE | ±--- | ±--- | DRAFT WHERE APPLICABLE MUST REMAIN WITHIN DIMENSIONS | | SIZE A/4 | | THIS DRAWING CONTAINS INFORMATION THAT IS PROPRIETARY TO MOLEX INCORPORATED AND SHOULD NOT BE USED WITHOUT WRITTEN PERMISSION | | | | | |
| ANGULAR ±---° | | | | | | | | | | | | |

6 5 4 3 2 1