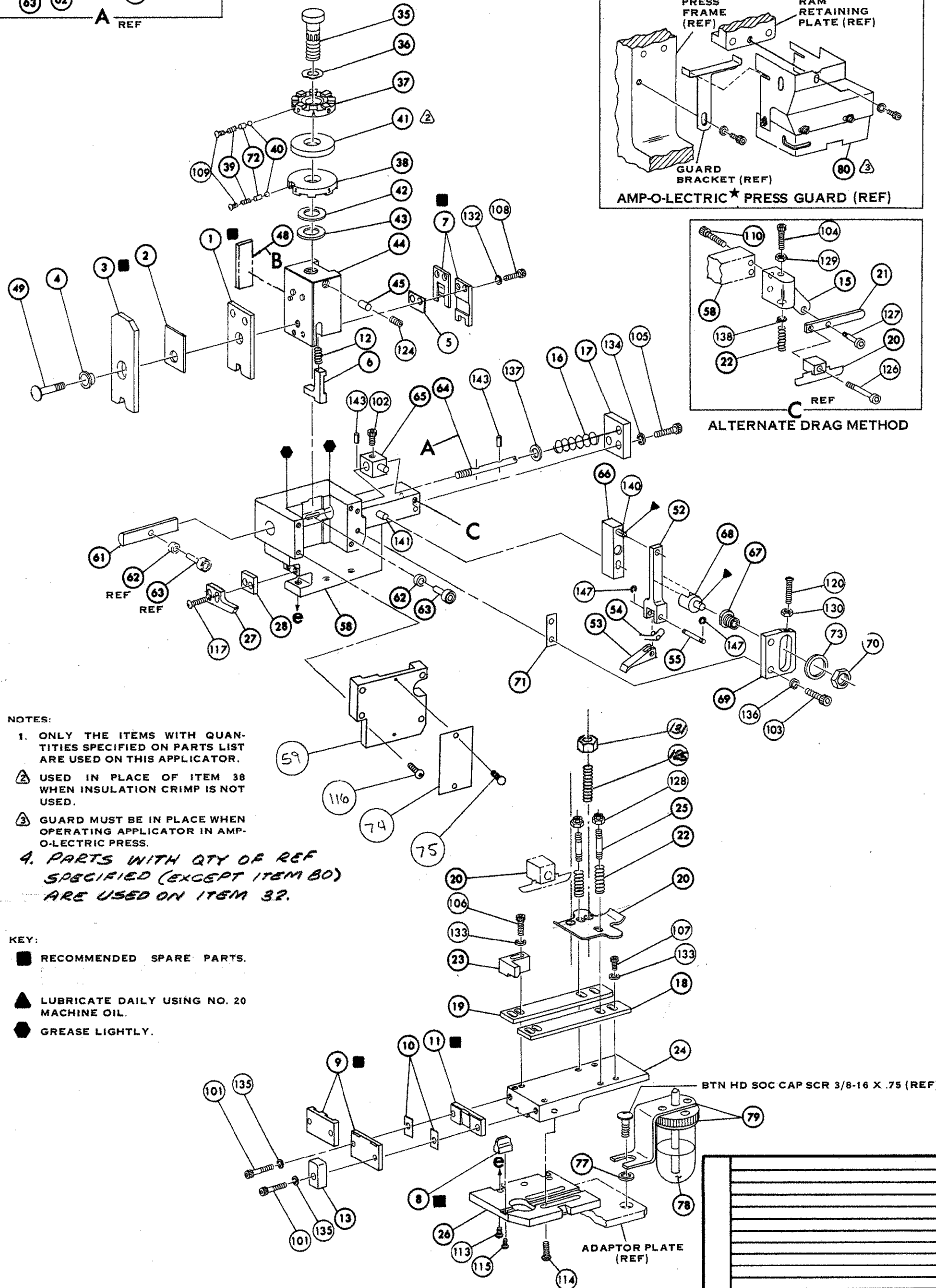
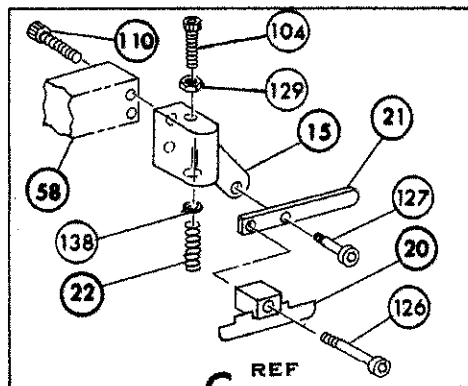
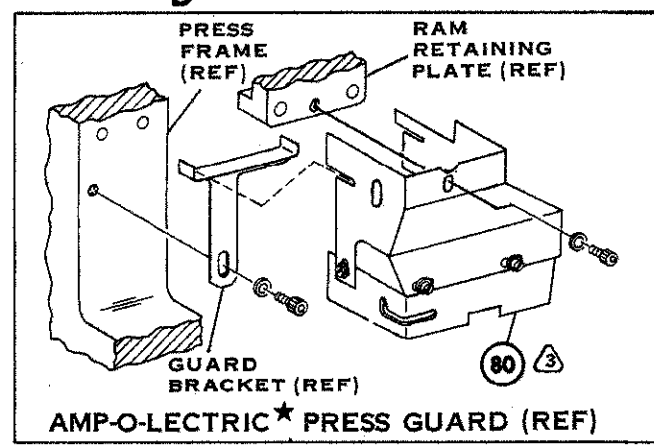
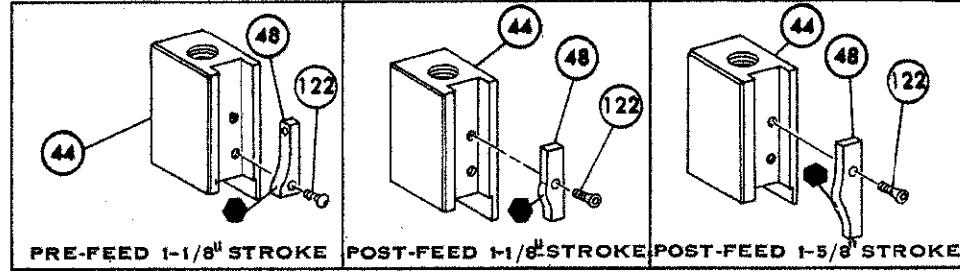
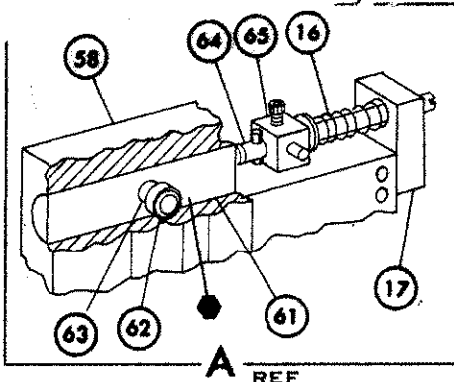


THIS IS A CONTROLLED DOCUMENT.



NOTES:

- 1. ONLY THE ITEMS WITH QUANTITIES SPECIFIED ON PARTS LIST ARE USED ON THIS APPLICATOR.
- 2. USED IN PLACE OF ITEM 38 WHEN INSULATION CRIMP IS NOT USED.
- 3. GUARD MUST BE IN PLACE WHEN OPERATING APPLICATOR IN AMP-O-LECTRIC PRESS.
- 4. PARTS WITH QTY OF REF SPECIFIED (EXCEPT ITEM 80) ARE USED ON ITEM 32.

KEY:

- RECOMMENDED SPARE PARTS.
- LUBRICATE DAILY USING NO. 20 MACHINE OIL.
- GREASE LIGHTLY.

REQ.	PART NO.	DESCRIPTION	NO.	REQ.	PART NO.	DESCRIPTION	NO.
162	REF	690517-1	SPACER	71			
161		22594-8	HEX, NUT	70			
160		240628-1	PLATE, ADJ	69			
159		240626-1	SHAFT, PIVOT	68			
158		240633-1	BUSHING	67			
157		455680-1	LEVER, INTERMEDIATE	66			
156		240629-1	BLOCK, PIVOT	65			
155		240632-2	SCREW, ADJ	64			
154		240659-3	PIN, CAM ROLLER	63			
153		240658-1	CAM, ROLLER	62			
152	REF	454398-1	ROD, FEED	61			
151				60			
150	REF	454220-1	CAP, RAM	59			
149	REF	453736-1	HOUSING	58			
148				57			
147				56			
146	REF	240624-1	PIN, FEED FINGER	55			
145	REF	691499-1	SPRING, FEED FINGER	54			
144	REF	240635-1	FINGER, FEED	53			
143	REF	240634-1	LEVER, TERMINAL	52			
142				51			
141				50			
140	1	7-21002-9	BOLT, CRIMPER	49			
139	1	690602-5	CAM, PRE FEED 1-1/8 STROKE	48			
138				47			
137				46			
136	1	690191-1	PLUG, NYLON	45			
135	1	455674-1	RAM	44			
134	1	690125-1	WASHER, LAMINATED	43			
133	1	690124-1	WASHER, RAM	42			
132				41			
131	2	23241-6	BALL, STEEL	40			
130	2	690170-1	SPRING, COMPRESSION	39			
129	1	690142-1	DISC, INSULATION	38			
128	1	4-690141-2	DISC, WIRE	37			
127	1	22480-5	WASHER, SPRING	36			
126	1	690212-1	POST, RAM	35			
125				34			
124				33			
123	1	458980-1	APPLICATOR, BASIC (SUB ASSY)	32			
122				31			
121				30			
119	1	3690451-2	SPACER, STRIPPER	28			
118	1	240639-1	STRIPPER	27			
117	REF	455676-1	PLATE, BASE	26			
116	2	22354-B	DRAG, STUD	25			
115	1	455678-1	PLATE, STRIP GUIDE	24			
114	4	3-21002-3	SCR, BTN HD SKT CAP (1/4-20 x .50) STR GDE PL	23			
113	2	4-22281-1	SPRING, DRAG	22			
112	2	240636-1	LEVER, DRAG	21			
111	1	454177-1	DRAG, STOCK	20			
110	1	1-458030-5	GUIDE, STRIP REAR	19			
109	1	1-458031-5	GUIDE, STRIP FRONT	18			
108	REF	454178-1	GUIDE, FEED ROD	17			
107	REF	4-22284-9	SPRING, FEED RETURN	16			
106	1	454665-1	ADAPTOR, DRAG	15			
105				14			
104				13			
103				12			
102	1	240644-1	PLATE, REAR SHEAR	11			
101				10			
100				9			
99				8			
98				7			
97				6			
96				5			
95	1	2-240611-9	SPACER, SHEAR BLADE	4			
94	1	238009-1	SPACER, TUBULAR, INS CRIMPER	3			
93	1	456135-4	CRIMPER, INSULATION	2			
92	1	455888-7	SPACER, INSULATION	1			
91	2	456423-3	CRIMPER, WIRE				

TERM APPL SPEC 114-2084

CRIMPING DATA

PAD LETTER	CRIMP HEIGHT	WIRE SIZE	WIRE STRIP LENGTH	THIS APPLICATOR WILL APPLY RINGS	
A	.089	#16		GROUP I	GROUP II
B	.084	#18		62688	42842
C	.081	#20		62689	42933
D	NOT USED			62690	42934

CRIMP SIZE TYPE FEED PRESS REF.
 WIRE .120 F .860 565435-5
 INSULATION .130 0
 INSULATION RANGE WIRE RANGE APPLICATOR INSTRUCTION A18029
 SEE REMARKS #20-#16 HOOK 60072

AMP-O-LECTRIC PRE FEED

INS. RANGE GROUP I .080-.120 GROUP II .100-.140

SET UP GAGE 258638-1 LAYOUT NO. 354
 APPROVED 9/10/73
 CHECKED 9/10/73
 REL. 9/10/73

AMP AMP INCORPORATED HARRISBURG, PENNA.

MINIATURE QUICK CHANGE APPLICATOR END-FEED (RING & HOOK)

LTR	REVISION RECORD	ECN	DATE	LTR	REVISION RECORD	ECN	DATE

687912-2